



PERFECT NAILS

CATALOG 2021-2022



Perfect Nails worldwide



Since 1992, our priority has been to provide nail technicians with the most perfect, **highest possible quality** products in every category. Today Perfect Nails is listed among the **most innovative** nail enhancement product ranges on the global professional market. We pride ourselves in our Perfect Nails family of top level nail technicians that has constantly expanded **for 30 years** now. **Our courses** and products aim to enable nail technicians to provide top quality services to their clients.



Contents

■ Primers, Auxiliary Liquids, Removers	4-9
■ Nail Care, Top Coat, Nail Polish	10-13
■ Base & Top Gels	14-23
■ All-in-One Builder Gels	24-29
■ Color Gel Polish	30-41
■ Gel Polish Starter Kits	42-45
■ Builder Gels	46-61
■ Perfect AcrylGel	62-65
■ Nail Art & Color Gels	66-73
■ Acrylic Powders	74-81
■ Gel & Acrylic Kits	82-87
■ Nail Files	88-95
■ Builder & Nail Art Brushes	96-103
■ Tips & Nail Forms	104-107
■ Professional Metallic Tools & Accessories	108-111
■ Drill Bits & Sanding Bits	112-119
■ Electric Tools & Lamps	120-125
■ Stamping Accessories	126-131
■ Nail Art Supplies	132-153
■ Protective Gear	154-157
■ Salon Accessories & Tools	158-171

PRIMERS, auxiliary liquids,

removers

PERFECT BOND PRIMER

■ Acid-free liquid adhesive film

Acid-free. Water repelling formula to prevent lifting and fungal infections. It forms a shiny and sticky layer on the natural nail surface. Highly recommended for problematic nails.

4 ML PNSA2003

15 ML PNSA2002



ACID PRIMER

■ Acid-based primer liquid

It contains acid and has a distinctive pungent smell, and removes most of the water- and fat-content of the natural nail plate to achieve even better adhesion. Let it dry completely, then apply Perfect Bond Primer or base gel (e.g. Bond Gel Vitamine+, Elastic Hard Gel). Highly recommended for clients with sweaty, clammy hands.

CAUTION! This product is corrosive, so avoid all skin contact. It should only be applied on the natural nail plate. Do not apply on nail enhancements. Please store at room temperature, as cool storage may cause crystallization.

15 ML PNSA847



PURE NAIL

■ Liquid to prevent fungal infections

Special formula containing an anti-fungal agent, tolnaftate, to prevent nail fungus-related issues. Rub one or two drops into the skin folds and onto the nail plate. Helps in reattaching the lifted nail plate onto the nail bed.

4 ML PNSA826

15 ML PNSA818



AVAILABLE
IN SPRAY



PERFECT PREP

■ Nail primer liquid

Liquid nail primer that prevents fungal infections, helps to achieve good adhesion, and also has water repellent and degreasing qualities. An acid-free product with a pH neutralizing effect, recommended for lacgel, gel, acrylic, and AcrylGel techniques. Its skin-friendly formula does not damage the nail plate.

4 ML PNSA825

15 ML PNSA006

30 ML PNSA807

100 ML PNSA808

250 ML PNSA809

500 ML PNSA811

100 ML SPRAY PNSA839



PERFECT CLEAN

■ Multifunctional cleaning liquid

Suitable for cleaning and degreasing nails and skin surfaces, removing the tacky layer as well as the cleaning of tools and surfaces. Displays a pleasant, slightly peachy scent.

100 ML SPRAY PNSA819

500 ML PNSA820

AVAILABLE
IN SPRAY



BRUSH CLEANER

■ Brush cleaning liquid

Removes any residue from the brushes.

30 ML PNSA804

100 ML PNSA805

250 ML PNSA806

ACRYLGEL SOLUTION

■ Solution developed for AcrylGel

Perfectly suitable for working with AcrylGel, cleaning the brush and removing the tacky layer. Contains no fragrance and color additives, so it causes no discoloration in the AcrylGel.

PLEASE NOTE: Avoid overusing AcrylGel Solution as it may overthin the product, causing lifting and/or small bubbles.

100 ML PNZ4057



FOR ACRYLGEL
SHAPING &
CLEANSING

GEL CLEANER

■ Gel cleanser

Fragrance-free liquid to remove the tacky dispersion layer of cured gel, gel polish and AcrylGel from the nail surface.

30 ML PNSA801

100 ML PNSA802

250 ML PNSA803

500 ML PNSA810

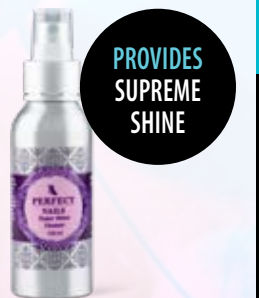


HYPER SHINE CLEANER

■ High shine gel cleanser

Its oil-based skin softening components with a refreshing tea scent nourish the cuticles. Always use this product as the finishing step, as the oil content may hinder the adhesion of any subsequent layer of gel or gel polish.

100 ML PNSA841



PROVIDES
SUPREME
SHINE

AROMA CLEANER

■ Scented gel cleanser

Scented liquid to remove the tacky dispersion layer of cured gel, gel polish and AcrylGel from the nail surface, providing it with a long-lasting shine.

STRAWBERRY

1 000 ML PNSA822

CANDY

1 000 ML PNSA840



BESTSELLER



ARTIFICIAL NAIL REMOVER

■ Particularly effective solvent

Solution for the quick removal of tips, acrylic nails and gel polish.

100 ML PNSA702

1 000 ML PNSA703



LACGEL REMOVER

■ Gel polish remover solution

Special formula for the gentle and quick removal of the gel polish layer without drying the skin.

100 ML PNSA705

1 000 ML PNSA704



NAIL POLISH REMOVER

■ Acetone-free nail polish remover

Recommended for removing traditional nail polish. Removes the nail polish in a gentle, nail-friendly way.

100 ML PNSA600

1 000 ML PNSA601



REMOVER WRAP FOIL

■ Aluminium foil with cotton pad insert

Easily removes any type of gel polish and acrylic nails. The strong foil and the no-tear material prevent the evaporation of the solvent, allowing for a shorter application time.

100 PCS / PACK PNSE001

LIQUID

■ Standard speed liquid

Compatible with any builder and color acrylic powder. A slight purple-bluish hue helps prevent yellowing and discoloration. Provides maximal adhesion. The perfect choice for both beginners and advanced users.

30 ML PNLQ020

100 ML PNLQ021

250 ML PNLQ022

500 ML PNLQ032



ODORLESS UV/LED LIQUID

■ Odorless liquid which cures under UV/LED light

Odorless UV/LED liquid with an anti-yellowing formula. It contains a special agent to promote adhesion and prevent lifting. This liquid cures under both UV and LED light.

20 ML PNLQ034



INTENSIVE LIQUID

■ High speed liquid

Provides a color-enhancing effect; slight purple tone. The perfect choice for both beginners and advanced users. When used in combination with high speed acrylic powders, it provides even faster curing, making it the ideal choice for competitions.

30 ML PNLQ026

100 ML PNLQ027

250 ML PNLQ028

500 ML PNLQ033



DAPPEN DISH – PORCELAIN

■ Dappen dish made of porcelain with a cork stopper

Liquid container with heat distributing double thickness walls preventing the premature setting of acrylic in warmer and a delayed setting in colder ambient temperatures. The container is corked for an odor-tight sealing. Easy to clean.

PC PNSE218



TEMPERATURE-COMPENSATING PORCELAIN

NAIL CARE

top coat, nail polish



NAIL HARDENER

- Nail hardener varnish with bamboo extract

Flexible nail care product with bamboo extract. Recommended for treating weakened natural nails upon the removal of gel polish and gel.

4 ML PNSA471

15 ML PNSA470



SHIELD
FOR NAILS

CUTICLE SOFTENER

- Skin softener liquid

Light skin solvent to loosen up the dead skin layer for easier manual and machine manicure/ pedicure. Rinse off with soapy water after use.

4 ML PNSA837

15 ML PNSA838



GLASS COAT

- High shine, quick-dry top coat

Quick-dry top coat for nail polish, providing high gloss finish and scratch resistance. An anti-yellowing formula prevents the discoloration of the nail polish.

4 ML PNSA451

15 ML PNSA450



ROMANIA'S
FAVORITE

BASE & TOP COAT

- Flexible base/top coat

Strengthens the nails and prevents discoloration. Used as a cover shine, it boosts the drying time of the nail polish, and provides it with a vivid, brilliant shine.

4 ML PNSA421

15 ML PNSA420





GEL EFFECT NAIL POLISH

■ Gel-like nail polish range

More flexible than regular nail polish. This quick drying, durable, easy to apply nail polish provides perfect coverage in the first layer. Dries to an extra shiny surface, providing a gel polish effect on the nails. A base and a top coat is recommended.

PERFECT TIP: Before application, make sure to shake the nail polish bottle to release pigments from the bottom.

DRY TIME: 3–5 minutes

7 ML PNSZL001-020



NEW

FX BASE GEL

■ Flexible, nail-strengthening base for nail polish

Provides outstanding adhesion between the nail plate and color nail polish. This strong adhesive layer ensures a more durable nail polish manicure. Suitable for strengthening the nails as well.

DRY TIME: 2 minutes

7 ML PNDNY029



NEW

HIGH SHINE GEL

■ High shine top coat for nail polish

Protects nail polish from scratches and abrasion caused by everyday use.

DRY TIME: 4 minutes

7 ML PNDNY028

CUTICLE OIL

■ Cuticle revitalizing oil

Rich in almond and peach kernel oil to nourish and treat the natural nail and the skin around the nail plate. Rub a few drops of this revitalizing oil into the cuticle area and around the nail contour, or apply it directly on the natural nail surface.



PINEAPPLE

4 ML PNSA823
15 ML PNSA812



PEACH

4 ML PNSA824
15 ML PNSA480



GRAPE

4 ML PNSA844
15 ML PNSA843



STRAWBERRY

4 ML PNSA846
15 ML PNSA845



MARZIPAN

4 ML PNSA849
15 ML PNSA850



FLOWER FUSION

4 ML PNSA851
15 ML PNSA852

BASE AND

top gels

BOND GEL VITAMINE+

■ Adhesion boosting, flexible base gel with vitamins

Thin, universal base gel to boost the adhesion of various nail enhancement materials, minimizing the chance of lifting from the natural nail surface. Forms a thinner and more readily soluble layer than the traditional bases, and also protects the nails. It provides rock solid adhesion even to problematic nail surfaces.

HEAT PRODUCTION: none | **CURE TIME:** UV 2–3 min., UV/LED 30–60 sec.

PERFECT TIP: For extremely problematic nails use the Hardener Gel after applying Bond Gel Vitamine+.

4 ML PNZ049

15 ML PNZ050

THICKNESS	●
FLEXIBILITY	● ● ● ● ●
SOLUBILITY	● ● ● ● ●



HARDENER GEL

■ Flexible base gel with nail hardening properties

Medium thick, soluble base gel with nail hardening properties. Flexible and bendable to easily follow the movement of the natural nails. Protects the natural nails from impact and damage. It smooths out uneven nail surfaces. Suitable for nail shape correction and fixing of slightly broken-off nail corners.

PLEASE NOTE: The product only allows a very short nail extension with the use of a nail form, as the highly flexible material only provides minimal support.

HEAT PRODUCTION: none | **CURE TIME:** UV 2–3 min., UV/LED 30–60 sec.

4 ML PNZ047

15 ML PNZ048

THICKNESS	● ● ●
FLEXIBILITY	● ● ● ●
SOLUBILITY	● ● ● ●



LACGEL BASE/TOP

■ Flexible base and shine top gel

Medium thick, flexible, soluble base and shine gel providing excellent adhesion. Apply the product on gel polish or on any type of nail enhancement as finishing cover shine. The layer will last and retain its gloss for weeks.

CURE TIME: UV 2–3 min., UV/LED 60–90 sec.

4 ML PNZM000

15 ML PNZ017

THICKNESS	● ●
FLEXIBILITY	● ● ● ●
SOLUBILITY	● ●





NO CLEANSE TOP SHIELD

■ Slightly flexible, no-cleanser shine top gel

Medium thin, slightly flexible, soluble, non-yellowing shine gel requiring no cleansing. Apply the product in a normal thickness layer on sculpted nails and in an extra thin layer on nails strengthened with Hardener Gel/Elastic Hard Gel. Flexibility is only obtained when applied in a thin layer.

CURE TIME: UV 3–4 min., UV/LED 60–90 sec.

ATTENTION: Upon curing allow a 1 minute relax phase for the gel to retain its shine.

4 ML PNZ051

15 ML PNZ052

THICKNESS	● ●
FLEXIBILITY	● ●
SOLUBILITY	● ● ● ●



FLEXI TOP GLOSS

■ Flexible shine top gel

Medium thick, soluble, flexible, high gloss shine gel with color-enhancing properties. Apply the product on gel polish or on any type of nail enhancement as finishing cover shine. The layer will last and retain its gloss for weeks. A slight bluish tint prevents yellowing and highlights the white nail tips. Requires cleansing after curing.

CURE TIME: UV 2–4 min., UV/LED 60–90 sec.

4 ML PNZ6039

15 ML PNZ6040

THICKNESS	● ● ●
FLEXIBILITY	● ● ● ●
SOLUBILITY	● ● ● ●



TOP GEL

■ Non-flexible, no-cleanser shine top gels

Medium thin shine gel requiring no cleansing. Forms an extra strong and tough protective layer for a durable shine that will last for weeks. Rigid, only use on the surface of nail builder materials.

CURE TIME: UV 2–3 min., UV/LED 30–60 sec.

15 ML PNZ0002

THICKNESS	● ●
FLEXIBILITY	●
SOLUBILITY	●

EXTREME GLOSS GEL

■ Flexible, no-cleanser shine top gel

Thick, flexible shine gel requiring no cleansing. Forget cobweb-cracks and yellowing of the nail surface with this beautiful glassy shine. Apply the product on gel polish or on any type of nail enhancement as finishing cover shine. The layer will last and retain its gloss for weeks.

CURE TIME: UV 2–3 min., UV/LED 120 sec.

8 ML PNZ6044

15 ML PNZ6045

THICKNESS	● ● ● ●
FLEXIBILITY	● ● ● ● ●
SOLUBILITY	●



COOL SHINE EVER GEL

■ Flexible, no-cleanser shine top gel with UV protector formula

This is a medium thick, flexible shine gel with UV protector formula that creates a protective shield. Its purplish-blue hue neutralizes the yellowing effect of UV lights. Apply the product on gel polish or on any type of nail enhancement as a top gel. The durable layer will retain its gloss for weeks.

CURE TIME: UV 2–3 min., UV/LED 60–90 sec.

4 ML PNZ6050

15 ML PNZ6051

THICKNESS	● ● ●
FLEXIBILITY	● ● ● ● ●
SOLUBILITY	●



SPEED & SHINE TOP GEL

■ Medium flexible, no-cleanser shine top gel

Medium thick, brilliant gloss shine gel requiring no cleansing. Apply the product on gel polish or on any type of nail enhancement as finishing cover shine. A particularly durable layer resistant to chemicals and solvents. The layer will last and retain its gloss for weeks.

CURE TIME: UV 1–3 min., UV/LED 30–60 sec.

ATTENTION: Allow a 1 minute relax phase upon curing for the gel to retain its gloss.

15 ML PNZ6041

THICKNESS	● ● ●
FLEXIBILITY	● ● ●
SOLUBILITY	●



REMAINS
MATTE

VELVET MATT EXTRA GEL

Flexible, no-cleanse extra matte top gel

Medium thick, flexible, no-cleanse top gel that creates an extra matte, velvety surface on any color without modifying the hue of the applied gel polish. The matte finish is long-lasting and does not become shiny with time. Apply the product on gel polish or on any type of nail enhancement as a top gel.

CURE TIME: UV 3 min., UV/LED 120 sec.

8 ML PNZ6048

15 ML PNZ6049

THICKNESS	● ●
FLEXIBILITY	● ● ● ● ●
SOLUBILITY	●

GLOW UP GEL

Flexible, transparent gel that glows in the dark

Medium thin, flexible, transparent and fluorescent gel which absorbs light, then emits it in the dark. Applied over any color it will make it glow in the dark, without affecting the tone. Suitable for radiant decorations and making the whole nail surface glow. Requires a shine gel layer upon curing. Non-soluble.

CURE TIME: UV 2–3 min., UV/LED 30–60 sec.

8 ML PNZ6042

THICKNESS	● ●
FLEXIBILITY	● ●
SOLUBILITY	●

NAIL ART TOP GEL

Flexible, surface filler shine top gel

Flexible, high-shine, thick consistency top gel – ideal choice for clear-capping nail art designs to achieve a perfectly smooth surface. It evens out gaps between nail art elements, ensuring their long-lasting adhesion.

PERFECT TIP: Wipe over the surface with dry cotton wool upon application for a beautiful gloss.

CURE TIME: UV 2–3 min., UV/LED 60–90 sec.

15 ML PNZ077

THICKNESS	● ● ● ● ●
FLEXIBILITY	● ● ● ● ●
SOLUBILITY	● ● ● ● ●

GRANITE TOP GEL

Flexible, no-cleanse top gel that includes tiny black bits of various sizes and irregular shapes

Flexible, no-cleanse top gel that includes tiny black bits of various sizes and irregular shapes. The Mini contains small and mid-size bits, while Maxi includes somewhat larger bits as well. The Matt version of this top gel range contains small, mid-size and larger bits.

PERFECT TIP: Try combining the Mini and the Maxi top gel. Apply one coat of Maxi, cure for 10 seconds, then apply a coat of Mini on top.

CURE TIME: UV 2-3 min., UV/LED 60 sec.

MATT 15 ML PNZ122

MINI 15 ML PNZ123

MAXI 15 ML PNZ124

THICKNESS	● ●
FLEXIBILITY	● ● ● ● ●
SOLUBILITY	●

NEW



GRANITE EFFECT TOP GEL COLLECTION

Top gels with a granite effect

This collection allows you to create all sorts of granite effects from fine-grained to coarse-grained designs, shiny or matte.

PERFECT TIP: For a perfect granite effect, try combining our Granite Effect Top Gels.

KIT PNKG073

CONTENTS

15 ML Granite Top Gel - Matt

15 ML Granite Top Gel - Mini

15 ML Granite Top Gel - Maxi



NEW

SAVE 10%
WHEN
PURCHASING
A SET



BASE AND BUILDER GELS – COMPARISON TABLE

WHAT TO USE TOGETHER AND HOW

PRODUCT NAME	PRODUCT FEATURES	USE	PRODUCT COMBINATION	COLOR	COVERAGE	CONSISTENCY		FLEXIBILITY	CURE TYPE	CURE TIME	CLEANSSED SURFACE	SURFACE WHEN CURED, STICKINESS	CLEANSING	HEAT PRODUCTION	SOLUBILITY	SOAK-OFF TIME	DURABILITY
Bond Gel Vitamine+	base gel with vitamins	nail preparation (dry manicure) + Perfect Prep	LacGel, LacGel Plus, LacGel Rapid, Hardener Gel, Elastic Hard Gel, LacGel Base/Top, Premium Gel, LacGel Effect, LacGel Cat Eye, LacGel LaQ X	transparent, water clear	✖	●		●●●●●	UV, UV/LED	2-3 min., 30-60 sec.	●	✓	✖	●	●●●●●	5-8 min.	2 weeks
Hardener Gel	base gel suitable for nail correction	nail preparation (dry manicure) + Perfect Prep	LacGel, LacGel Plus, LacGel Rapid, LacGel Base/Top, LacGel Effect, LacGel Cat Eye, LacGel LaQ X	transparent, slight purple tone	✖	●●●		●●●●●	UV, UV/LED	2-3 min., 30-60 sec.	●	✓	✖	●	●●●●●	8-15 min.	3-4 weeks
Elastic Hard Gel	brush-applicable base & builder gel	nail preparation (dry manicure) + Perfect Prep	LacGel, LacGel Plus, LacGel Rapid, LacGel Glass, LacGel Effect, LacGel Cat Eye, LacGel LaQ X	transparent, water clear	✖	●●●●●		●●●	UV, UV/LED	2-3 min., 30-60 sec.	●●●	✓	✖	●●	●●●●●	8-15 min.	3-4 weeks
Elastic Gel	all-in-one base, builder & nail bed extension gel	nail preparation (dry manicure) + Perfect Prep	LacGel, LacGel Plus, LacGel Rapid, LacGel Effect, LacGel Cat Eye, LacGel LaQ X	various tones	✓	●●●		●●●	UV, UV/LED	2-3 min., 30-60 sec.	●●●	✓	✖	●●	●●●●●	8-15 min.	3-4 weeks
Fiber Gel Vitamin	all-in-one base and builder gel with glass fibers	nail preparation (dry manicure) + Perfect Prep	LacGel, LacGel Plus, LacGel Rapid, LacGel Effect, LacGel Cat Eye, LacGel LaQ X	various tones	✓	●●●		●●●	UV, UV/LED	2-3 min., 30-60 sec.	●●●	✓	✖	●●	●●●●●	8-15 min.	3-4 weeks

CONSISTENCY

● thin | ●● medium thin | ●●● medium thick | ●●●● thick | ●●●●● very thick

FLEXIBILITY

● rigid | ●● slightly flexible | ●●● medium flexible | ●●●● flexible | ●●●●● highly flexible

SOLUBILITY

● non-soluble | ●● low solubility | ●●● medium solubility | ●●●● soluble | ●●●●● good solubility

CLEANSSED SURFACE

● matte | ●● slight gloss | ●●● medium gloss | ●●●● gloss | ●●●●● brilliant gloss

HEAT PRODUCTION

● none | ●● slight | ●●● medium | ●●●● high | ●●●●● very high

BASE AND BUILDER GELS – COMPARISON TABLE

WHAT TO USE TOGETHER AND HOW

PRODUCT NAME	PRODUCT FEATURES	USE	PRODUCT COMBINATION	COLOR	CONSISTENCY		FLEXIBILITY	CURE TYPE	CURE TIME	CLEANSSED SURFACE	SURFACE WHEN CURED, STICKINESS	CLEANSING	HEAT PRODUCTION	SOLUBILITY	SOAK-OFF TIME	DURABILITY
No Cleanse Top Shield	no-cleanse shine top gel	apply on filed and dust-free surface in a normal thickness layer or, on gel polish colors, in a thin layer	strengthening + gel polish, any type of nail enhancement	transparent, water clear, slight purple tone	●●		●●	UV, UV/LED	3-4 min., 60-90 sec.	●●●●	✗	✗	●●	●●●●	8-15 min.	2-3 weeks
Flexi Top Gloss	color-enhancing top shine gel	apply on filed and dust-free surface of gel polish colors, in a normal thickness layer	any gel polish, any type of nail enhancement	transparent, water clear, slight blue tone	●●●		●●●●	UV, UV/LED	2-4 min., 60-90 sec.	●●●●●	✓	✓	●●	●●●●	8-15 min.	2-3 weeks
Speed & Shine Top Gel	quick curing shine top gel	apply on filed and dust-free surface in a normal thickness layer or, on gel polish colors, in a thin layer	strengthening + gel polish, any type of nail enhancement	transparent, water clear	●●●		●●●	UV, UV/LED	1-3 min., 30-60 sec.	●●●●●	✗	✗	●●	●	-	2-3 weeks
Extreme Gloss Gel	extremely high shine top gel	apply on filed and dust-free surface of gel polish colors, in a thin thickness layer	any gel polish, any type of nail enhancement	transparent, water clear	●●●●		●●●●●	UV, UV/LED	2-3 min., 120 sec.	●●●●●	✗	✗	●●	●	-	3-4 weeks
Cool Shine Ever Gel	shine top gel with UV protector formula and glistening water effect	apply on filed and dust-free surface of gel polish colors, in a normal thickness layer	any gel polish, any type of nail enhancement	transparent, water clear, slight purple tone	●●●		●●●●●	UV, UV/LED	2-3 min., 60-90 sec.	●●●●●	✗	✗	●●	●	-	4-5 weeks
LacGel Base/Top	flexible base and shine top gel	as a base: nail preparation + Perfect Prep, as a cover: apply on filed and dust-free surface of gel polish colors	as a base: any gel polish; as a cover: LacGel, LacGel Plus, LacGel Rapid, Hardener Gel, Elastic Gels	transparent, water clear	●●		●●●●	UV, UV/LED	2-3 min., 60-90 sec.	●●●●	✓	base ✗ top ✓	●●	●●	8-15 min.	3-4 weeks
Velvet Matt Extra Gel	velvety, extra matte top gel	apply on filed and dust-free surface of gel polish colors, in a normal thickness layer	any gel polish, any type of nail enhancement	transparent, water clear	●●		●●●●●	UV, UV/LED	3 min., 120 sec.	●	✗	✗	●	●	-	3-4 weeks
Top Gel	non-flexible shine top gel	apply on filed and dust-free surface in a thin thickness layer	rigid builder acrylic, gel	transparent, water clear	●●		●	UV, UV/LED	2-3 min., 60-90 sec.	●●●●●	✗	✗	●●	●	-	2-3 weeks
Nail Art Top Gel	shine top gel with surface filling properties	apply on filed and dust-free surface of gel polish colors	any gel polish, any type of nail enhancement	transparent, water clear	●●●●		●●●●	UV, UV/LED	2-3 min., 60-90 sec.	●●●●●	✓	✓	●	●●●●	8-15 min.	2-3 weeks
Glow Up Gel	glow-in-the-dark gel	apply on filed and dust-free surface of gel polish colors	any gel polish, any type of nail enhancement	transparent, water clear	●●		●●	UV, UV/LED	2-3 min., 30-60 sec.	●●●	✓	✓	●	●	-	2-3 weeks
Granit Top Gel	matte and shiny top gels with granite effect	apply on filed and dust-free surface of gel polish colors, in a normal thickness layer	any gel polish, any type of nail enhancement	clear with smaller and larger black bits	●●		●●●●	UV, UV/LED	2-3 min., 30-60 sec.	shiny ● matte ●●●●●	✗	✗	shiny ●●● matte ●●●●●	●	-	3-4 weeks

CONSISTENCY

● thin | ●● medium thin | ●●● medium thick | ●●●● thick | ●●●●● very thick

FLEXIBILITY

● rigid | ●● slightly flexible | ●●● medium flexible | ●●●● flexible | ●●●●● highly flexible

SOLUBILITY

● non-soluble | ●● low solubility | ●●● medium solubility | ●●●● soluble | ●●●●● good solubility

CLEANSSED SURFACE

● matte | ●● slight gloss | ●●● medium gloss | ●●●● gloss | ●●●●● brilliant gloss

HEAT PRODUCTION

● none | ●● slight | ●●● medium | ●●●● high | ●●●●● very high

ALL-IN-ONE

builder gels



Elastic Gel

■ All-in-one base and builder gel in a bottle

Suitable as base gel to strengthen the nails before gel polish application, as well as for corrections, nail sculpting and creating an apex.

ELASTIC HARD GEL

■ Clear, self-spreading, brush-applicable base and builder gel with surface filling properties

Thick and strong like a builder gel, yet flexible like gel polish. Suitable as base gel to strengthen the nails before gel polish application, as well as for nail hardening/correction, nail sculpting and creating an apex. It protects the natural nails from impact and mechanical damage. This gel spreads completely and offers surface filling properties, also ideal for the no-filing technique. Flexible and bendable, but will not deform. It offers high stability and adhesion; requires no primer, and retains shine after cleansing.

HEAT PRODUCTION: slight | **CURE TIME:** UV 2–3 min., UV/LED 30–60 sec.

4 ML PNZ060

15 ML PNZ059

THICKNESS	● ● ●
FLEXIBILITY	● ● ●
SOLUBILITY	● ● ● ●



NAILS:
Évi Darabos

Elastic Hard Gel

All-in-one builder gels



ELASTIC GEL

■ All-in-one base, builder and extension gel in a bottle

Suitable as a thin base gel to strengthen the nails before gel polish application, as well as for nail hardening/correction, nail sculpting and creating an apex. Protects the natural nails from impact and mechanical damage. Perfect for nude nails or French nails with a slight extension. This gel spreads completely and offers surface filling properties, also ideal for the no-filing technique. It offers high stability and adhesion; requires no primer, and retains shine after cleansing.

HEAT PRODUCTION: slight | **CURE TIME:** UV 2–3 min., UV/LED 30–60 sec.

15 ML

THICKNESS	● ● ●
FLEXIBILITY	● ● ●
SOLUBILITY	● ● ● ●

SILVER SHINE
ELASTIC GEL



PNZ104

GOLD SHINE
ELASTIC GEL



PNZ105

PINK SHINE
ELASTIC GEL



PNZ116

MILKY PINK
ELASTIC GEL



PNZ093

COVER BLUSH
ELASTIC GEL



PNZ118

COVER BLOSSOM
ELASTIC GEL



PNZ119

COVER TAN
ELASTIC GEL



PNZ117

COVER ROSE
ELASTIC GEL



PNZ094

COVER PINK
ELASTIC GEL



PNZ088

COVER NUDE
ELASTIC GEL



PNZ087



NAILS:
Évi Darabos

BABY BOOMER - ELASTIC GEL COLLECTION

■ All-in-one builder gels for a perfect Baby Boomer design

PERFECT TIP: We highly recommend our Ombre brush in order to achieve a perfect blend of colors.

KIT PNKG035

CONTENTS

- 15 ML Elastic Gel - Cover Pink
- 15 ML Fiber Gel Vitamin - Latte
- 15 ML Elastic Gel - Milky Pink



SAVE 10%
WHEN
PURCHASING
A SET

FRENCH COVER - ELASTIC GEL COLLECTION

■ All-in-one extension gels for a French nail

KIT PNKG055

CONTENTS

- 15 ML Elastic Gel - Cover Tan
- 15 ML Elastic Gel - Cover Blush
- 15 ML Elastic Gel - Cover Blossom



NEW

SAVE 10%
WHEN
PURCHASING
A SET

GLAMOUR - ELASTIC GEL COLLECTION

■ All-in-one extension gels with a hint of golden, silver and pink sparkle

KIT PNKG056

CONTENTS

- 15 ML Elastic Gel - Silver Shine
- 15 ML Elastic Gel - Gold Shine
- 15 ML Elastic Gel - Pink Shine



NEW

SAVE 10%
WHEN
PURCHASING
A SET

Fiber Gel Vitamin

■ All-in-one base and builder gel with glass fibers

Suitable as base gel to strengthen the nails before gel polish application, as well as for corrections, nail sculpting and creating an apex.



FIBER GEL VITAMIN

■ All-in-one base, builder and extension gel with glass fibers

Thick and strong like a builder gel, yet flexible like gel polish. Suitable as base gel to strengthen the nails before gel polish application, as well as for corrections, nail sculpting, extension and creating an apex. This gel spreads perfectly and it evens out the surface; it is also ideal for the no-filing technique. The fiber glass in the gel provides high stability and a solid base suitable for building longer nails (up to 5mm). Retains shine after cleansing. Requires no primer.

HEAT PRODUCTION: slight | **CURE TIME:** UV 2–3 min., UV/LED 30–60 sec.

15 ML PNZ090

THICKNESS	● ● ● ● ●
FLEXIBILITY	● ● ● ● ●
SOLUBILITY	● ● ● ● ●

WHITE SHINE
FIBER GEL VITAMIN



PNZ113

NUDE SHINE
FIBER GEL VITAMIN



PNZ112

CLEAR
FIBER GEL VITAMIN



PNZ120

PINK
FIBER GEL VITAMIN



PNZ107

LATTE
FIBER GEL VITAMIN



PNZ090

ROSE QUARTZ
FIBER GEL VITAMIN



PNZ111

BABY PINK
FIBER GEL VITAMIN



PNZ115

CANDY
FIBER GEL VITAMIN



PNZ114

COVER PINK SHADES - FIBER GEL VITAMIN COLLECTION

■ All-in-one extension gels with glass fibers for a French nail

KIT PNKG054

CONTENTS

- 15 ML Fiber Gel Vitamin - Rose Quartz
- 15 ML Fiber Gel Vitamin - Candy
- 15 ML Fiber Gel Vitamin - Baby Pink



NEW
SAVE 10%
WHEN
PURCHASING
A SET

RETRO FRENCH - FIBER GEL VITAMIN COLLECTION

■ All-in-one builder gels with glass fibers for a natural-looking French nail

KIT PNKG063

CONTENTS

- 15 ML Fiber Gel Vitamin - Latte
- 15 ML Fiber Gel Vitamin - Pink
- 15 ML Fiber Gel Vitamin - Clear



NEW
SAVE 10%
WHEN
PURCHASING
A SET



COLOR

gel polish



LacGel Rapid

■ Highly durable and pigmented one-step gel polish colors

A thicker lacgel of creamier texture and a higher pigment concentration, which will provide perfect coverage in as little as one layer. Requires neither a base gel layer nor a top gel layer. Requires cleansing as curing leaves a tacky dispersion layer. The surface cures to shiny; a flexible top gel is recommended as a finishing touch. It can be soaked off with acetone.

CURE TIME: UV 2–3 min., UV/LED 60 sec.

PERFECT TIP: Stir the gel polish with a spatula, or shake the bottle thoroughly before use to ensure an even distribution of pigment.

- 4 ML PNZRM001-019
- 8 ML PNZNYR001-019
- 15 ML PNZR001-019

THICKNESS	● ● ●
FLEXIBILITY	● ● ● ●
SOLUBILITY	● ● ● ● ●



WINTER WONDERLAND LACGEL EFFECT COLLECTION

5X8 ML PNKG030





LacGel

■ Highly durable gel polish colors in three steps

Softly spreading gel polish with excellent adhesion – a transition between color gels and nail polish. No scratching, abrasion and flaking for up to 3 weeks. Requires base and top gel. A flexible top gel is recommended as a finishing touch. It can be soaked off with acetone.

CURE TIME: UV 2–3 min., UV/LED 60 sec.

PERFECT TIP: Stir the gel polish with a spatula, or shake the bottle thoroughly before use to ensure an even distribution of pigment.

4 ML PNZM001-199

8 ML PNZNY001-199

THICKNESS	● ●
FLEXIBILITY	● ● ● ●
SOLUBILITY	● ● ● ● ●



4 ML PNZM001-199

8 ML PNZNY001-199

NEW

SAVE 10%
WHEN
PURCHASING
A SET



5X8 ML PNKG077



BALI GARDEN LACGEL COLLECTION

MORE THAN
100
COLORS



LIPSTICK LACGEL COLLECTION

5X8 ML PNKG033



SAVE 10%
WHEN
PURCHASING
A SET



LacGel Plus

Highly pigmented gel polish colors in three steps

A thicker gel polish of creamier texture and a higher pigment concentration, which will provide perfect coverage in as little as one layer. It spreads more readily and cures to shinier than traditional gel polish. Requires base and top gel. The surface cures to slightly shiny; a flexible top gel is recommended as a finishing touch. It can be soaked off with acetone.

CURE TIME: UV 2–3 min., UV/LED 60 sec.

PERFECT TIP: Stir the gel polish with a spatula, or shake the bottle thoroughly before use to ensure an even distribution of pigment.

- 4 ML PNZMP01-127
- 8 ML PNZNY8001-8127

THICKNESS	● ● ●
FLEXIBILITY	● ● ● ●
SOLUBILITY	● ● ● ● ●



- 4 ML PNZMP01-127
- 8 ML PNZNY8001-8127



SAVE 10%
WHEN
PURCHASING
A SET



BEST OF MAKEUP LACGEL PLUS COLLECTION

5X8 ML PNKG032

NEARLY
100
COLORS



NEW
SAVE 10%
WHEN
PURCHASING
A SET



BEST OF WEDDING LACGEL COLLECTION

5X8 ML PNKG040

LacGel Effect

■ Gel polish with glitter and other particles in three steps

Use as standalone gel polish or apply as second layer on any gel polish color. It requires base and top gels and cures to moderately shiny, with a flexible top gel recommended as a finishing touch. It can be soaked off with acetone.

CURE TIME: UV 2–3 min., UV/LED 60 sec.

PERFECT TIP: Stir the gel polish with a spatula, or shake the bottle thoroughly before use to ensure an even distribution of glitter particles.

4 ML PNZME001-015

8 ML PNZNYE001-015

THICKNESS	● ● ●
FLEXIBILITY	● ● ● ●
SOLUBILITY	● ● ● ● ●



PINK DIAMOND LACGEL EFFECT COLLECTION

5X8 ML PNKG067



LacGel Cat Eye

■ Magnetizable gel polish colors with cat's eye prismatic effect

For the cat eye effect hold a magnet over the painted surface for a few seconds; start curing when the desired prismatic effect occurs. Without magnetizing, this product serves as regular gel polish. Requires base and top gel. A flexible top gel is recommended as a finishing touch. It can be soaked off with acetone.

CURE TIME: UV 2–3 min., UV/LED 60 sec.

PERFECT TIP: Stir the gel polish with a spatula, or shake the bottle thoroughly before use, for a consistent pigment concentration throughout. Please use a black base before applying 9D Cat Eye lacgels.

4 ML PNZMC001-20

8 ML PNZNY9001-9020



THICKNESS	● ● ●
FLEXIBILITY	● ● ● ●
SOLUBILITY	● ● ● ● ●

CAT EYE LACGEL MAGNET – BLACK

■ Double-sided magnet for extra-pigmented magnetizable gel polish

The marked end of the magnet pulls the color grains together, whereas the unmarked end of the magnet spreads the particles. You can create a circle and several other shapes with this special magnet. This magnet is specifically recommended for 9D Cat Eye LacGels.

PC PNSE708



JUNGLE LACGEL CAT EYE COLLECTION

5X8 ML PNKG020





LacGel LaQ X NEW

■ Gel polish colors with an extra 30% pigmentation in three steps

This is a thicker, 30% more pigmented gel polish with a creamy consistency, so it offers perfect coverage in a single coat. This self-leveling gel polish is a crossover between color gel and nail polish. It remains free of scratches, and there is no chipping or flaking for up to 3-4 weeks. It requires a base and a top gel. A flexible top gel is recommended as a finishing touch. It can be soaked off with acetone.

CURE TIME: UV 2–3 min., UV/LED 60 sec.

PERFECT TIP: Stir the gel polish with a spatula, or shake the bottle thoroughly before use to ensure an even distribution of pigment.

8 ML PNZXNY001-015

THICKNESS	● ● ●
FLEXIBILITY	● ● ● ●
SOLUBILITY	● ● ● ● ●



8 ML



8 ML



MACAROON LACGEL LAQ X COLLECTION

5X8 ML PNKG066



THE RED CLASSICS LACGEL LAQ X COLLECTION

5X8 ML PNKG065



2021 NEW BOTTLE DESIGN
Wider for more convenience



NEW GEL POLISH
PERFECT NAILS **BOTTLE & BRUSH**
Suitable for the Russian "dry brush" technique



OH, BABY! LACGEL LAQ X COLLECTION

5X8 ML PNKG068



COLOR GEL POLISH – COMPARISON TABLE

WHAT TO USE TOGETHER AND HOW

PRODUCT NAME	PRODUCT FEATURES	USE	BASE GEL COMBINATION	TOP GEL COMBINATION	DURABILITY	CONSISTENCY		APPLICATION / LEVEL OF COVERAGE	FLEXIBILITY	CURE TYPE	CURE TIME	SURFACE WHEN CURED, STICKINESS	CLEANSING	CLEANSED SURFACE	TOP GEL	SOLUBILITY	SOAK-OFF TIME
LacGel	three-step lacgel	nail preparation (dry manicure) + Perfect Prep + base gel + color + top gel	Bond Gel Vitamine+, Hardener Gel, Elastic Gel, Fiber Gel Vitamin, LacGel Base/Top	Cool Shine Ever Top Gel, No Cleanse Top Shield, Extreme Gloss Gel, Velvet Matt Extra Gel, Flexi Top Gloss, LacGel Base/Top	3-4 weeks	●●		two normal layers	●●●●	UV, UV/LED	2–3 min., 60 sec.	✓	✗	●	✓	●●●●●	file off top layer + 10–20 min.
LacGel Plus	thicker and more pigmented three-step lacgel	nail preparation (dry manicure) + Perfect Prep + base gel + color + top gel	Bond Gel Vitamine+, Hardener Gel, Elastic Gel, Fiber Gel Vitamin, LacGel Base/Top	Cool Shine Ever Top Gel, No Cleanse Top Shield, Extreme Gloss Gel, Velvet Matt Extra Gel, Flexi Top Gloss, LacGel Base/Top	3-4 weeks	●●●		one - two normal layers	●●●●	UV, UV/LED	2–3 min., 60 sec.	✓	✗	●●	✓	●●●●●	file off top layer + 10–20 min.
LacGel Rapid	requires cleansing single-step lacgel	nail preparation (dry manicure) + Perfect Prep + base gel + color + cleansing	Bond Gel Vitamine+, Hardener Gel, Elastic Gel, Fiber Gel Vitamin, LacGel Base/Top	Cool Shine Ever Top Gel, No Cleanse Top Shield, Extreme Gloss Gel, Velvet Matt Extra Gel, Flexi Top Gloss, LacGel Base/Top	2-3 weeks	●●●		one - two normal layers	●●●●	UV, UV/LED	2–3 min., 60 sec.	✓	✓	●●●	✗	●●●●●	file off top layer + 10–20 min.
LacGel Glass	transparent, three-step lacgel with a colored glass effect	nail preparation (dry manicure) + Perfect Prep + base gel + color + top gel	Bond Gel Vitamine+, Hardener Gel, Elastic Gel, Fiber Gel Vitamin, LacGel Base/Top	Cool Shine Ever Top Gel, No Cleanse Top Shield, Extreme Gloss Gel, Velvet Matt Extra Gel, Flexi Top Gloss, LacGel Base/Top	3-4 weeks	●●		one - two normal layers	●●●●	UV, UV/LED	2–3 min., 60 sec.	✓	✗	●●●	✓	●●●●●	file off top layer + 10–20 min.
LacGel Effect	three-step lacgel with glitter, velvet fibers and other particles	nail preparation (dry manicure) + Perfect Prep + base gel + color + top gel	Bond Gel Vitamine+, Hardener Gel, Elastic Gel, Fiber Gel Vitamin, LacGel Base/Top	Cool Shine Ever Top Gel, No Cleanse Top Shield, Extreme Gloss Gel, Velvet Matt Extra Gel, Flexi Top Gloss, LacGel Base/Top	3-4 weeks	●●●		one - two normal layers	●●●●	UV, UV/LED	2–3 min., 60 sec.	✓	✗	●●●	✓	●●●●●	file off top layer + 10–20 min.
LacGel Cat Eye	magnetic, three-step lacgel with a cateye effect	nail preparation (dry manicure) + Perfect Prep + base gel + color + top gel	Bond Gel Vitamine+, Hardener Gel, Elastic Gel, Fiber Gel Vitamin, LacGel Base/Top	Cool Shine Ever Top Gel, No Cleanse Top Shield, Extreme Gloss Gel, Velvet Matt Extra Gel, Flexi Top Gloss, LacGel Base/Top	3-4 weeks	●●●		two normal layers	●●●●	UV, UV/LED	2–3 min., 60 sec.	✓	✗	●	✓	●●●●●	file off top layer + 10–20 min.
LacGel LaQ X	extra pigmented, creamy three-step lacgel	nail preparation (dry manicure) + Perfect Prep + base gel + color + top gel	Bond Gel Vitamine+, Hardener Gel, Elastic Gel, Fiber Gel Vitamin, LacGel Base/Top	Cool Shine Ever Top Gel, No Cleanse Top Shield, Extreme Gloss Gel, Velvet Matt Extra Gel, Flexi Top Gloss, LacGel Base/Top	3-4 weeks	●●●		one - two thin layers	●●●●	UV, UV/LED	2–3 min., 60 sec.	✓	✗	●●●	✓	●●●●●	file off top layer + 10–20 min.

CONSISTENCY

● thin | ●● medium thin | ●●● medium thick | ●●●● thick | ●●●●● very thick

FLEXIBILITY

● rigid | ●● slightly flexible | ●●● medium flexible | ●●●● flexible | ●●●●● highly flexible

CLEANSED SURFACE

● matte | ●● slight gloss | ●●● medium gloss | ●●●● high gloss | ●●●●● brilliant gloss

SOLUBILITY

● non-soluble | ●● low solubility | ●●● medium solubility | ●●●● soluble | ●●●●● good solubility

Comparison table

Color gel polish

Comparison table

Color gel polish

GEL POLISH

starter kits



For gel polish application

■ Recommended for trainees or as a trial set for Perfect Nails products

These kits are ideal for manicure and gel polish application. A complimentary technical card is included for reference to ensure the correct order of product application.



MINI KIT

■ For gel polish application

CONTENTS

KIT PNKG041

4 ML Perfect Prep 4 ML LacGel Base/Top 20 ML Gel Cleaner 4 ML LacGel #007
1 PC Orange Wood Stick 1 PC White Buffer 100 PCS Premium Nail Wipes



MINI MOUSE KIT

■ For gel polish application with a UV/LED lamp (containing 6 LEDs)

CONTENTS

KIT PNKG048

4 ML Perfect Prep 4 ML LacGel Base/Top 20 ML Gel Cleaner 4 ML LacGel #007
1 PC Orange Wood Stick 1 PC White Buffer 100 PCS Premium Nail Wipes
1 PC Mouse Gelpolish UV/LED Lamp



PRO KIT

■ For gel polish application with a UV/LED lamp (containing 21 LEDs)

CONTENTS

KIT PNKG043

4 ML Perfect Prep 4 ML LacGel Base/Top 20 ML Gel Cleaner 4 ML LacGel #007
1 PC Orange Wood Stick 1 PC White Buffer 100 PCS Premium Nail Wipes
1 PC Smart Universal UV/LED Lamp



UNICORN PRO KIT

■ For gel polish application with a UV/LED lamp (containing 30 LEDs)

CONTENTS

KIT PNKG045

4 ML Perfect Prep 4 ML LacGel Base/Top 20 ML Gel Cleaner 4 ML LacGel #007
1 PC Orange Wood Stick 1 PC White Buffer 100 PCS Premium Nail Wipes
1 PC Unicorn Pink UV/LED Lamp



SAVE 15%
WHEN
PURCHASING
A SET

For gel polish application

Gel polish starter kits

For nail-strengthening

■ Recommended for trainees or as a trial set for Perfect Nails products

These kits are ideal for manicure and strengthening the nails with Elastic Hard Gel before gel polish application. A complimentary technical card is included for reference to ensure the correct order of product application.



MAXI KIT

■ For nail-strengthening and gel polish application

- CONTENTS
- KIT
- PNKG042
- 4 ML
- Perfect Prep
- 4 ML
- LacGel Base/Top
- 20 ML
- Gel Cleaner
- 4 ML
- LacGel #007
- 4 ML
- LacGel #151
- 4 ML
- Cuticle Softener
- 4 ML
- Elastic Hard Gel
- 1 PC
- White Buffer
- 1 PC
- Orange Wood Stick
- 1 PC
- Pusher & Scraper - Flat
- 100 PCS
- Premium Nail Wipes



MAXI MOUSE KIT

■ For nail-strengthening and gel polish application with a UV/LED lamp (containing 6 LEDs)

- CONTENTS
- KIT
- PNKG049
- 4 ML
- Perfect Prep
- 4 ML
- LacGel Base/Top
- 20 ML
- Gel Cleaner
- 4 ML
- LacGel #007
- 4 ML
- LacGel #151
- 4 ML
- Cuticle Softener
- 4 ML
- Elastic Hard Gel
- 1 PC
- White Buffer
- 1 PC
- Orange Wood Stick
- 1 PC
- Pusher & Scraper - Flat
- 100 PCS
- Premium Nail Wipes
- 1 PC
- Mouse Gelpolish UV/LED Lamp



PRO PLUS KIT

■ For nail-strengthening and gel polish application with a UV/LED lamp (containing 21 LEDs)

- CONTENTS
- KIT
- PNKG044
- 4 ML
- Perfect Prep
- 4 ML
- LacGel Base/Top
- 20 ML
- Gel Cleaner
- 4 ML
- LacGel #007
- 4 ML
- LacGel #151
- 4 ML
- Cuticle Softener
- 4 ML
- Elastic Hard Gel
- 1 PC
- White Buffer
- 1 PC
- LacGel Waterproof Nail File - Fine/Medium
- 1 PC
- Orange Wood Stick
- 1 PC
- Pusher & Scraper - Mani
- 100 PCS
- Premium Nail Wipes
- 1 PC
- Smart Universal UV/LED Lamp

UNICORN PRO PLUS KIT

■ For nail-strengthening and gel polish application with a UV/LED lamp (containing 30 LEDs)

- CONTENTS
- KIT
- PNKG046
- 4 ML
- Perfect Prep
- 4 ML
- LacGel Base/Top
- 20 ML
- Gel Cleaner
- 4 ML
- LacGel #007
- 4 ML
- LacGel #151
- 4 ML
- Cuticle Softener
- 4 ML
- Elastic Hard Gel
- 1 PC
- White Buffer
- 1 PC
- LacGel Waterproof Nail File - Fine/Medium
- 1 PC
- Orange Wood Stick
- 1 PC
- Pusher & Scraper - Mani
- 100 PCS
- Premium Nail Wipes
- 1 PC
- Unicorn Silver UV/LED Lamp



MEGA PACK KIT

■ For nail-strengthening and gel polish application with a UV/LED lamp (containing 36 LEDs)

- CONTENTS
- KIT
- PNKG047
- 4 ML
- Perfect Prep
- 4 ML
- LacGel Base/Top
- 20 ML
- Gel Cleaner
- 4 ML
- LacGel #007
- 4 ML
- LacGel #151
- 4 ML
- Cuticle Softener
- 4 ML
- Elastic Hard Gel
- 1 PC
- White Buffer
- 1 PC
- LacGel Waterproof Nail File - Fine/Medium
- 1 PC
- Orange Wood Stick
- 1 PC
- Pusher & Scraper - Flat
- 100 PCS
- Premium Nail Wipes
- 1 PC
- Moonlight Plus Universal UV/LED Lamp



NAILS:
Kriszta Gáspár-Köbli



White Gels

■ White builder gels

EXTREME WHITE GEL

■ Medium thick, extremely white, self-spreading builder gel

Allows for a perfectly smooth and level surface, offers outstanding shape retention. Recommended for working on the French free edge. Allows creating a clear-cut, contoured smile-line. A clear base gel is needed before applying this white multiphase gel. Requires cleansing at the end of the process.

PHASE: multiphase | **HEAT PRODUCTION:** slight | **CURE TIME:** UV 2–3 min., UV/LED 60–90 sec.

5 G PNZ4026

15 G PNZ4023

THICKNESS ● ● ●
FLEXIBILITY ● ●



WHITE BABE GEL

■ Medium thin white gel providing slight coverage

Provides steady adhesion on the natural nails, without a separate base layer. Ideal for natural-looking nail enhancements. A slightly translucent white tone for easier gradients. Requires cleansing at the end of the process.

PHASE: single-phase | **HEAT PRODUCTION:** high | **CURE TIME:** UV 2–3 min., UV/LED 60–90 sec.

15 G PNZ061

THICKNESS ● ●
FLEXIBILITY ●



FIBER REFILL GEL

■ Milky-white, medium thick, color-enhancing builder gel with glass fibers

The thinner consistency allows for quicker and easier application. Due to its self-leveling and the short cure time, you can cut the infill time in half. Glass fibers boost adhesion and durability, while preventing the product from flooding the side walls. It is ideal for infills and the no-filing technique. It offers high stability and adhesion and requires no primer. The surface should be cleansed after curing.

PHASE: single-phase | **HEAT PRODUCTION:** slight | **CURE TIME:** UV 2–3 min., UV/LED 60–90 sec.

15 G PNZ109

THICKNESS ● ● ●
FLEXIBILITY ● ● ●



Basic Gels

■ Basic builder gels

This is a range of medium thick, self-spreading gels which adhere perfectly to natural nails. These gels are easy to apply and file, and produce little heat and dust. Equally suitable for tip-gel techniques, sculpting and infill.

CURE TIME: UV 2-4 min., UV/LED 60–90 sec.



BASIC BLUE GEL

■ Builder gel of bluish tone, with color-enhancing properties

Suitable for base layers and C-curves. Requires cleansing after curing. Recommended for both beginners and experienced nail technicians.

PHASE: single-phase | **HEAT PRODUCTION:** minimal | **CURE TIME:** UV 2–4 min., UV/LED 60–90 sec.

15 G PNZ6037

50 G PNZ6038

THICKNESS ● ● ●

FLEXIBILITY ●



BASIC WHITE GEL

■ Natural white builder gel

Even one thin layer provides good, spotless coverage. A clear base coat is needed before applying this white multiphase gel. Requires cleansing after curing.

PERFECT TIP: Due to the high pigment content, this product is best applied in a thin layer, and longer cure time should be allowed.

PHASE: multiphase | **HEAT PRODUCTION:** minimal | **CURE TIME:** UV 2–4 min., UV/LED 60–90 sec.

15 G PNZ6053

THICKNESS ● ● ●

FLEXIBILITY ●

BASIC COVER DARK GEL

■ Dark toned nail bed extension gel

A thin layer of this gel already provides good, spotless coverage. A clear base coat is needed before application, and the product should be clear-capped with gel. The surface should be cleansed after curing. Recommended for lighter skin tones.

PERFECT TIP: Gently stir the product with a spatula before use. Since the product is highly pigmented, it should be applied in a thinner layer and allow a longer cure time.

PHASE: multiphase | **HEAT PRODUCTION:** minimal | **CURE TIME:** UV 2–4 min., UV/LED 60–90 sec.

15 G PNZ6054

THICKNESS ● ● ●

FLEXIBILITY ●



Basic Gel Kit

NEW

■ Basic builder gels for creating nail extensions

Medium thick, self-leveling gel range that offers perfect adhesion to the natural nail. Further characteristics include easy application, low heat production, easy filing and reduced dust production. These products are suitable for the tip-gel technique, sculpting and infills as well.

HEAT PRODUCTION: minimal | **CURE TIME:** UV 2–4 min., UV/LED 60–90 sec.

KIT PNKG064

THICKNESS ● ● ●

FLEXIBILITY ●

CONTENTS

- 15 G Basic Blue Gel
- 15 G Basic White Gel
- 15 G Basic Cover Dark Gel



Clear Gels

■ Clear builder gels

COLOR-ENHANCING PROPERTIES

OUR CHAMPIONS' FAVORITE



PREMIUM GEL

■ Color-enhancing, medium thin, self-leveling builder gel

The product's purplish tone enhances colors. This highly flexible and bendable product retains the G-curve and it is easy to file. Due to its flexibility, it may only be used with flexible top gel. The surface should be cleansed after curing.
PERFECT TIP: Its outstanding flexibility makes this product highly suitable for strengthening natural nails or the slight extension of nails (size XS: 0.5–1 mm).
PHASE: single-phase | **HEAT PRODUCTION:** minimal | **CURE TIME:** UV 2 min., UV/LED 60 sec.

5 G

PNZ041

15 G

PNZ042

50 G

PNZ044

THICKNESS

● ●

FLEXIBILITY

● ● ● ● ●



ALMOST NO BURNING SENSATION

NO BURN GEL

■ Medium thick, transparent builder gel with almost no burning sensation

Creamy consistency, easy application, spreads readily without smearing, retains shape. Slightly flexible, bends well, and retains the G-curve. Crystal clear, contains no pigments, won't yellow. Cures without producing heat; retains shine after cleansing.
PHASE: single-phase | **HEAT PRODUCTION:** almost none | **CURE TIME:** UV 3 min., UV/LED 60 sec.

15 G

PNZ102

50 G

PNZ103

THICKNESS

● ● ●

FLEXIBILITY

● ●



ACTIVE CLEAR GEL

■ Very thick builder gel of creamy texture and violet tone

Provides steady adhesion to the natural nails, without a separate base layer. Perfectly suitable for extreme nail shapes and bending. Requires cleansing after curing.
PHASE: single-phase | **HEAT PRODUCTION:** high | **CURE TIME:** UV 2–3 min., UV/LED 60 sec.

15 G

PNZ4038

THICKNESS

● ● ● ● ●

FLEXIBILITY

●

EXTREME WHITENING GEL

■ Medium thick and transparent builder gel with whitening properties

Slight purple tone, with UV filtering and optical color-enhancing properties. Provides steady adhesion on the natural nails, without a separate base layer. Thick, still readily shaped; spreads perfectly without smearing. Slightly flexible, bends well, and retains the G-curve. Low dust production when filed. Requires cleansing after curing.

PHASE: single-phase | **HEAT PRODUCTION:** slight | **CURE TIME:** UV 3 min., UV/LED 60 sec.

15 G

PNZ096

50 G

PNZ097

THICKNESS

● ● ●

FLEXIBILITY

● ●



WHITENING EFFECT

PLATINUM GEL

■ Medium thick, builder gel of platinum shine

Creates a durable, resistant and solid surface, it is easy to shape and spreads perfectly without smearing. The product is bendable and retains the G-curve. Low dust production when filed. The surface should be cleansed after curing.

PERFECT TIP: Recommended for strengthening and medium (size M: approx. 1 cm) extension of nails. Readily mixes with pigment powders and other decorative materials.

PHASE: single-phase | **HEAT PRODUCTION:** minimal | **CURE TIME:** UV 2 min. UV/LED 60 sec.

5 G

PNZ037

15 G

PNZ038

50 G

PNZ040

THICKNESS

● ● ●

FLEXIBILITY

● ● ● ●



NO.1 BUILDER GEL

ICE GEL

■ Thick and softly spreading builder gel with color-enhancing effect

Color-enhancing properties due to the bluish tone. Beyond the standard nail shapes this product is also suitable for sculpting extra long nails & extreme nail shapes, as it won't smear. Remains shiny after cleansing.

PERFECT TIP: Recommended for salon nails and size L (1.5–2 cm) nail extensions.

PHASE: single-phase | **HEAT PRODUCTION:** high | **CURE TIME:** UV 2–3 min., UV/LED 60 sec.

15 G

PNZ4035

50 G

PNZ4037

THICKNESS

● ● ● ●

FLEXIBILITY

●

THE KING OF UNIQUE SHAPES



COLOR-ENHANCING PROPERTIES



CRYSTAL
CLEAR

CRYSTAL CLEAR GEL

Crystal clear thick, yet easily spreading builder gel

Provides steady adhesion to the natural nails, without a separate base layer. An easy-to-handle consistency makes it perfect for thin base layers and C-curves; won't smear. Recommended for both beginners and professionals. Requires cleansing after curing.

PERFECT TIP: Recommended for salon nails and size L (1.5–2 cm) nail extensions.

PHASE: single-phase | **HEAT PRODUCTION:** high | **CURE TIME:** UV 2–3 min., UV/LED 60 sec.

5 G PNZ4030

15 G PNZ4031

50 G PNZ4033

THICKNESS ● ● ● ●

FLEXIBILITY ●



NEW

ELASTIC REFILL GEL

Clear, medium thin, self-leveling builder gel

The thinner consistency allows for quicker and easier application. Due to its self-leveling and the short cure time, you can cut the infill time in half. It is ideal for infills and the no-filing technique. It offers high stability and adhesion and requires no primer. The surface should be cleansed after curing.

PHASE: single-phase | **HEAT PRODUCTION:** slight | **CURE TIME:** UV 2–3 min., UV/LED 30–60 sec.

15 G PNZ121

THICKNESS ● ●

FLEXIBILITY ● ● ●



NAILS:
Évi Darabos

Pink Gels

Pink builder gels

PINK BABE GEL

Very thick, baby pink gel providing slight coverage

Ideal for creating natural-looking nail enhancements, the Baby Boomer design or as a filler for French nail enhancements. The transparency of this product allows for creating the gradient effect with only a few strokes. Holds the C-curve perfectly, which makes it ideal for creating extreme shapes. Requires cleansing at the end of the process.

PHASE: single-phase | **HEAT PRODUCTION:** high | **CURE TIME:** UV 2–3 min., UV/LED 60–90 sec.

15 G PNZ073

50 G PNZ075

THICKNESS ● ● ● ● ●

FLEXIBILITY ● ●



FOR
BABY BOOMER
TECHNIQUE

ACTIVE PINK GEL

Very thick, glassy pink builder gel

It boosts and intensifies the nail bed color. Bendable and won't smear, making it highly suitable for nail bed extension and creating extreme nail shapes. Requires cleansing at the end of the process.

PERFECT TIP: Recommended for experienced nail technicians.

PHASE: single-phase | **HEAT PRODUCTION:** high | **CURE TIME:** UV 2–3 min., UV/LED 60–90 sec.

15 G PNZ6005

50 G PNZ6007

THICKNESS ● ● ● ● ●

FLEXIBILITY ●



CREAM PINK GEL

Medium thick, Barbie pink builder & nail bed extension gel

It is equally suitable for sculpting nails and creating surface designs. This product is ideal for an exquisite French manicure effect. It provides excellent adhesion to the natural nails, so there is no need for a base layer. The surface should be cleansed after curing. It is recommended for the rose quartz technique.

PERFECT TIP: Suitable for building nails up to size L.

PHASE: single-phase | **HEAT PRODUCTION:** minimal | **CURE TIME:** UV 2–3 min., UV/LED 60–90 sec.

15 G PNZ6002

THICKNESS ● ●

FLEXIBILITY ● ●



FOR
ROSE QUARTZ
TECHNIQUE

Cover Gels

■ Nail bed extension gels



BUILD & FILL COVER ROUGE GEL

■ Medium thick, darker tone builder & nail bed extension gel

The darker tone highlights the white French tip. Ideal for filing the smile line when sculpting a French nail, and suitable for infills as well. Self-spreading, yet retains shape. Provides good coverage in a thicker layer and a nice gradient in a thinner layer. Requires cleansing at the end of the process.

PHASE: single-phase | **HEAT PRODUCTION:** slight | **CURE TIME:** UV 2–3 min., UV/LED 60–90 sec.

15 G PNZ100

50 G PNZ101

THICKNESS	● ● ●
FLEXIBILITY	● ●



BUILD & FILL COVER BLUSH GEL

■ Thick, lighter tone builder & nail bed extension gel

The perfect choice for lighter skin tones. Ideal for filing the smile line when sculpting a French nail, and suitable for infills as well. Self-spreading, yet retains shape. Provides good coverage in a thicker layer and a nice gradient in a thinner layer. Requires cleansing at the end of the process.

PHASE: single-phase | **HEAT PRODUCTION:** slight | **CURE TIME:** UV 2–3 min., UV/LED 60–90 sec.

15 G PNZ098

50 G PNZ099

THICKNESS	● ● ● ●
FLEXIBILITY	● ●



COVER GEL

■ Highly pigmented, natural pink nail bed extension gel

The warm tone goes well with the natural color of the nail, and covers up any imperfections. The smile line will show no grow-out. Even one thin layer provides good, spotless coverage. Requires cleansing at the end of the process.

PHASE: single-phase | **HEAT PRODUCTION:** minimal | **CURE TIME:** UV 2–3 min., UV/LED 60–90 sec.

5 G PNZ6020

15 G PNZ6016

50 G PNZ6021

THICKNESS	● ● ●
FLEXIBILITY	● ●

COVER EXTRA GEL

■ Very thick, highly pigmented nail bed extension gel of darker tone

Ideal for building the appropriate nail structure for a French nail. The ultra light texture allows for a one-step shaping of the smile line. Not self-leveling, therefore retains the created shape even in the hottest temperatures. Requires cleansing at the end of the process.

PHASE: single-phase | **HEAT PRODUCTION:** high | **CURE TIME:** UV 2–3 min., UV/LED 60–90 sec.

15 G PNZ070

50 G PNZ072

THICKNESS	● ● ● ● ●
FLEXIBILITY	● ●



COVER NUDE GEL

■ Highly pigmented, medium thick, nail bed extension gel of nude tone

Creamy texture, easy to handle. Spreads readily, and won't smear, suitable for creating natural gradients. Provides steady adhesion on the natural nails, without a separate base layer. The color goes well with the natural tone of the nail, and covers up any imperfections. The smile line will show no grow-out. Requires cleansing at the end of the process.

PERFECT TIP: Perfect choice for both competitions and salon work.

PHASE: single-phase | **HEAT PRODUCTION:** minimal | **CURE TIME:** UV 2–3 min., UV/LED 60–90 sec.

15 G PNZ064

50 G PNZ066

THICKNESS	● ●
FLEXIBILITY	● ●



COVER BABE GEL

■ Very thick, peachy pink nail bed extension gel

Ideal for creating natural-looking nail enhancements, the Baby Boomer technique or as a filler for French nails. Slightly transparent, so the gradient can be created with a few movements. Requires cleansing at the end of the process.

PHASE: single-phase | **HEAT PRODUCTION:** high | **CURE TIME:** UV 2–3 min., UV/LED 60–90 sec.

15 G PNZ067

50 G PNZ069

THICKNESS	● ● ● ● ●
FLEXIBILITY	● ●





COVER PEACH GEL

■ Medium thick nail bed extension gel of lighter peach tone

Requires a clear base layer and a cover layer of Clear gel. Covers the imperfections of the natural nail perfectly. Extremely easy to apply and handle. The smile-line remains free of any grow-out. Requires cleansing at the end of the process.

PHASE: multiphase | **HEAT PRODUCTION:** minimal | **CURE TIME:** UV 2–3 min., UV/LED 60–90 sec.

15 G PNZ6018

THICKNESS	● ● ●
FLEXIBILITY	● ●



COVER SILVER SHINE GEL

■ Nail bed extension gel with a pearly-silver shine

This multiphase gel offers good coverage. A clear base coat is needed before application, and the product should be clear-capped with gel.

PHASE: multiphase | **HEAT PRODUCTION:** medium | **CURE TIME:** UV 2–3 min., UV/LED 60–90 sec.

5 G PNZ6012

15 G PNZ6013

THICKNESS	● ● ●
FLEXIBILITY	● ●

PEARLY
SILVER SHINE



COVER GOLD SHINE GEL

■ Nail bed extension gel with a pearly-gold shine

This multiphase gel offers good coverage. A clear base coat is needed before application, and the product should be clear-capped with gel.

PHASE: multiphase | **HEAT PRODUCTION:** medium | **CURE TIME:** UV 2–3 min., UV/LED 60–90 sec.

5 G PNZ6014

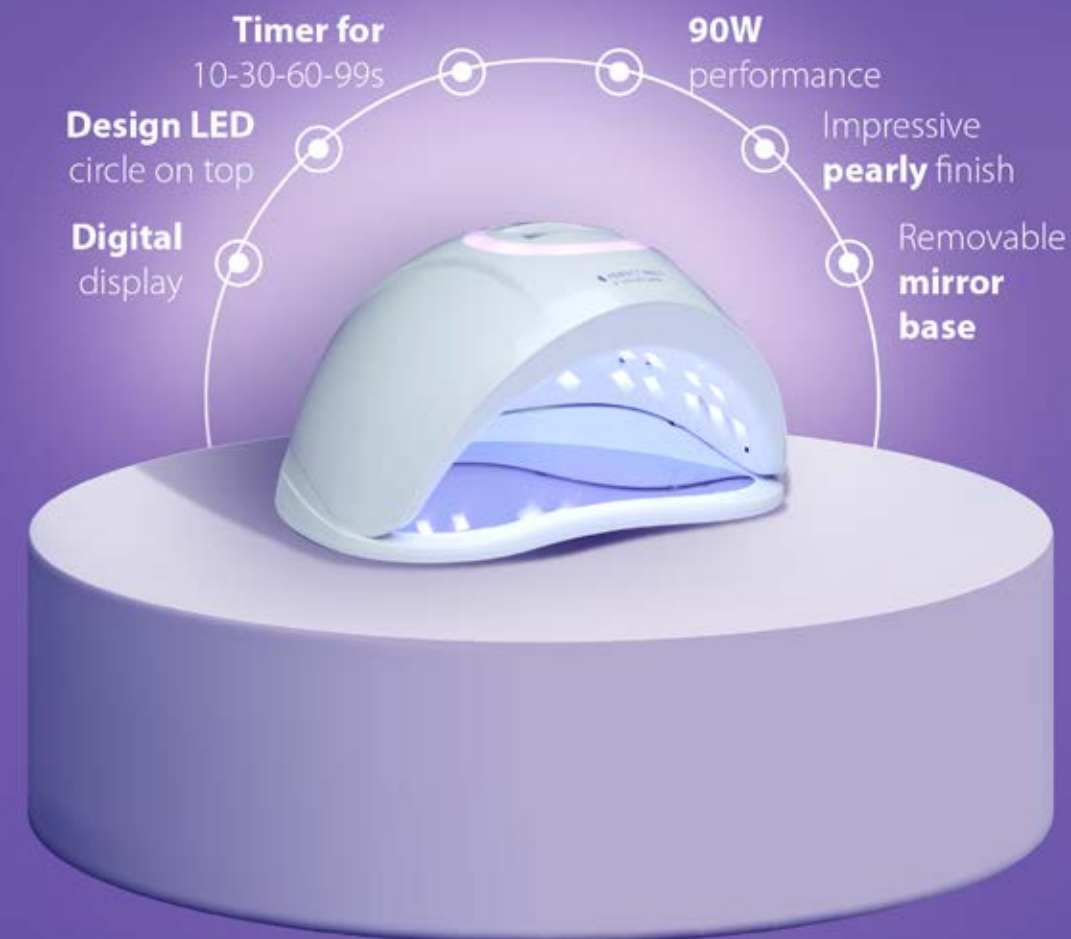
15 G PNZ6015

THICKNESS	● ● ●
FLEXIBILITY	● ●

PEARLY
GOLD SHINE



**SAVE TIME WITH
QUICK CURING!**
**DON'T LET THE LAMP
BE THE BASELINE FOR
YOUR SPEED!**



BUILDER GELS – COMPARISON TABLE

WHAT TO USE TOGETHER AND HOW

PRODUCT NAME	PRODUCT FEATURES	USE	PRODUCT COMBINATION	COLOR	COVERAGE		CONSISTENCY	FLEXIBILITY	NAIL HARDENING	NAIL EXTENSION	BENDABLE	PHASE	CURE TYPE	CURE TIME	HEAT PRODUCTION	CLEANSE
Basic Gels	builder & nail extension gels for tip-gel techniques, building and infill	nail preparation (dry manicure) + Perfect Prep + Perfect Bond Primer	Bond Gel Vitamine+, Cover Gels, Extreme White Gel, Top Gels, gel polish	various tones	varies		●●●	●	✓	S	✗	Blue: single White, Cover: multi	UV, UV/LED	2–4 min., 60–90 sec.	●●	✓
Premium Gel	builder gel with color-enhancing properties	nail preparation (dry manicure) + Perfect Prep + Perfect Bond Primer	Bond Gel Vitamine+, Cover Gels, Extreme White Gel, Flexi Top Gloss, Extreme Gloss Gel, Cool Shine Ever Gel, Velvet Matt Extra Gel, gel polish	transparent, water clear, purplish tone	✗		●●	●●●●●	✓	XS	✓	single	UV, UV/LED	2 min., 60 sec.	●●	✓
Platinum Gel	builder gel with platinum shine	nail preparation (dry manicure) + Perfect Prep + Perfect Bond Primer	Bond Gel Vitamine+, Cover Gels, Extreme White Gel, Top Gels, gel polish	transparent, water clear, slight purple tone	✗		●●●	●●●●	✓	M	✓	single	UV, UV/LED	2 min., 60 sec.	●●	✓
Extreme Whitening Gel	builder gel with whitening effect and optical color-enhancing properties	nail preparation (dry manicure) + Perfect Prep + Perfect Bond Primer	Bond Gel Vitamine+, Cover Gels, Extreme White Gel, Top Gels, gel polish	transparent, slight purple tone	✗		●●●	●●	✓	L	✓	single	UV, UV/LED	3 min., 60 sec.	●●●	✓
No Burn Gel	builder gel with almost no burning sensation	nail preparation (dry manicure) + Perfect Prep + Perfect Bond Primer	Bond Gel Vitamine+, Cover Gels, Extreme White Gel, Top Gel-ek, gel polish	transparent, water clear	✗		●●●	●●	✓	L	✓	single	UV, UV/LED	3 min., 60 sec.	●	✓
Ice Gel	builder gel with color-enhancing properties, for extreme nais	nail preparation (dry manicure) + Perfect Prep + Perfect Bond Primer	Bond Gel Vitamine+, Cover Gels, Extreme White Gel, Top Gel-ek, gel polish	slightly bluish	✗		●●●●	●	✓	L	✓	single	UV, UV/LED	2–3 min., 60 sec.	●●●●●	✓
Active Clear Gel	builder gel for creating extreme shapes	nail preparation (dry manicure) + Perfect Prep + Perfect Bond Primer	Bond Gel Vitamine+, Cover Gels, Extreme White Gel, Top Gel-ek, gel polish	transparent, violet tone	✗		●●●●	●	✓	L	✓	single	UV, UV/LED	2–3 min., 60 sec.	●●●●●	✓
Crystal Clear Gel	builder gel for creating size L nails	nail preparation (dry manicure) + Perfect Prep + Perfect Bond Primer	Bond Gel Vitamine+, Cover Gels, Extreme White Gel, Top Gels, gel polish	transparent, crystal clear	✗		●●●●	●	✓	L	✓	single	UV, UV/LED	2–3 min., 60 sec.	●●●●●	✓
Elastic Refill Gel	clear, self-leveling builder gel	nail preparation (dry manicure) + Perfect Prep	Flexi Top Gloss, Speed & Shine Top Gel, Extreme Gloss Gel, Cool Shine Ever Gel, Velvet Matt Extra Gel, gel polish	transparent, water clear	✗		●●	●●●	✓	S-M	✗	single	UV, UV/LED	2–3 min., 60 sec.	●●●	✓
Fiber Refill Gel	milky white builder gel with glass fibers	nail preparation (dry manicure) + Perfect Prep	Flexi Top Gloss, Speed & Shine Top Gel, Extreme Gloss Gel, Cool Shine Ever Gel, Velvet Matt Extra Gel, gel polish	milky pink	✓		●●●	●●●	✓	M	✓	single	UV, UV/LED	2–3 min., 60 sec.	●●●	✓
Extreme White Gel	builder gel for creating French free edges	goes on the base layer, requires no cleansing	Bond Gel Vitamine+, Clear Gels, Cover Gels, Top Gels	extremely white	✓		●●●	●●	✗	XL	✓	multi	UV, UV/LED	2–3 min., 60 sec.	●●●	✓

CONSISTENCY

● thin | ●● medium thin | ●●● medium thick | ●●●● thick | ●●●●● very thick

FLEXIBILITY

● rigid | ●● slightly flexible | ●●● medium flexible | ●●●● flexible | ●●●●● highly flexible

HEAT PRODUCTION

● almost none | ●● minimal | ●●● slight | ●●●● medium | ●●●●● high

BUILDER GELS – COMPARISON TABLE

WHAT TO USE TOGETHER AND HOW

PRODUCT NAME	PRODUCT FEATURES	USE	PRODUCT COMBINATION	COLOR	COVERAGE		CONSISTENCY	FLEXIBILITY	NAIL HARDENING	NAIL EXTENSION	BENDABLE	PHASE	CURE TYPE	CURE TIME	HEAT PRODUCTION	CLEANSE
White Babe Gel	slight coverage for baby boomer technique	nail preparation (dry manicure) + Perfect Prep + Perfect Bond Primer	Bond Gel Vitamine+, Clear Gels, Cover Gels, Top Gels	milky white	✓		●●	●	✓	L	✓	single	UV, UV/LED	2–3 min., 60 sec.	●●●●●	✓
Pink Babe , Cover Babe, Cover Extra Gel	builder & nail bed extension gel, also suitable for baby boomer technique	nail preparation (dry manicure) + Perfect Prep + Perfect Bond Primer	Clear Gels, Extreme White Gel, Top Gels	pink tones	✓		●●●●●	●●	✓	L	✓	single	UV, UV/LED	2–3 min., 60 sec.	●●●●●	✓
Active Pink Gel	builder gel for intensifying the nail bed color	nail preparation (dry manicure) + Perfect Prep + Perfect Bond Primer	Bond Gel Vitamine+, Cover Gels, Extreme White Gel, Top Gels, gel polish	glassy pink	✗		●●●●●	●	✓	XL	✓	single	UV, UV/LED	2–3 min., 60 sec.	●●●●●	✓
Cream Pink Gel	builder & nail bed extension gel, also suitable for rose quartz technique	nail preparation (dry manicure) + Perfect Prep + Perfect Bond Primer	Bond Gel Vitamine+, Extreme White Gel, Clear Gels, Top Gels	barbie pink	✓		●●	●●	✓	L	✓	single	UV, UV/LED	2–3 min., 60 sec.	●●	✓
Build & Fill Gel Rouge	nail bed extension gel also suitable for infill	nail preparation (dry manicure) + Perfect Prep + Perfect Bond Primer	Bond Gel Vitamine+, Extreme White Gel, Clear Gels, Top Gels	darker meat tone	✓		●●●	●●	✓	M	✓	single	UV, UV/LED	2–3 min., 60 sec.	●●●	✓
Build & Fill Gel Blush	nail bed extension gel also suitable for infill	nail preparation (dry manicure) + Perfect Prep + Perfect Bond Primer	Bond Gel Vitamine+, Extreme White Gel, Clear Gels, Top Gels	lighter meat tone	✓		●●●●	●●	✓	M	✓	single	UV, UV/LED	2–3 min., 60 sec.	●●●	✓
Cover Gel	highly pigmented nail bed extension gel	nail preparation (dry manicure) + Perfect Prep + Perfect Bond Primer	Bond Gel Vitamine+, Extreme White Gel, Clear Gels, Top Gels	warm pink tone	✓		●●●	●●	✗	M	✓	single	UV, UV/LED	2–3 min., 60 sec.	●●	✓
Cover Nude Gel	highly pigmented nail bed extension gel	nail preparation (dry manicure) + Perfect Prep + Perfect Bond Primer	Bond Gel Vitamine+, Extreme White Gel, Clear Gels, Top Gels	lighter natural pink tone	✓		●●	●●	✗	M	✓	single	UV, UV/LED	2–3 min., 60 sec.	●●	✓
Cover Peach Gel	nail bed extension gel	nail preparation (dry manicure) + Perfect Prep + Perfect Bond Primer + Base Gel	Bond Gel Vitamine+, Extreme White Gel, Clear Gels, Top Gels	light peach	✓		●●●	●●	✗	M	✓	multi	UV, UV/LED	2–3 min., 60 sec.	●●	✓
Cover Silver & Gold Shine Gel	nail bed extension gel with good coverage	nail preparation (dry manicure) + Perfect Prep + Perfect Bond Primer + Base Gel	Clear Gels, Extreme White Gel, Top Gels	pearly shine, nude tone	✓		●●●	●●	✓	M	✓	multi	UV, UV/LED	2–3 min., 60 sec.	●●●●	✓
Perfect AcrylGel	the lightness of gel nails combined with the stability of acrylic nails	nail preparation (dry manicure) + Perfect Prep + Perfect Bond Primer	Bond Gel Vitamine+, Top Gels	various tones	varies		●●●●●	●●	✓	XL	✓	single	UV, UV/LED	4–5 min., 120 sec.	●●●●●	✓
AcrylGel Prime	the lightness of gel nails combined with the stability of acrylic nails	nail preparation (dry manicure) + Perfect Prep + Perfect Bond Primer	Bond Gel Vitamine+, Top Gels	various tones	varies		●●●●●	●●	✓	XL	✓	single	UV, UV/LED	4–5 min., 120 sec.	●	✓

CONSISTENCY

● thin | ●● medium thin | ●●● medium thick | ●●●● thick | ●●●●● very thick

FLEXIBILITY

● rigid | ●● slightly flexible | ●●● medium flexible | ●●●● flexible | ●●●●● highly flexible

HEAT PRODUCTION

● almost none | ●● minimal | ●●● slight | ●●●● medium | ●●●●● high

PERFECT

AcrylGel



AcrylGel Prime

■ AcrylGel in a tube

Extra thick, yet easy to shape as long as needed. This product combines the benefits of gel and acrylic builder materials: applicable in a few steps, stays put and easy to file. Ideal for quick and efficient salon work on problematic nails as well. It provides excellent adhesion, and it only requires a liquid primer as base. Suitable for strengthening the natural nail and sculpting extensions both with nail forms and reverse tips. The polymerization during curing does not produce heat, so this product causes no burning sensation.

PERFECT TIP: If the product starts sticking to the bristles, dampen your brush with Perfect AcrylGel Solution. Use AcrylGel Tip kit for quick and easy building.

PHASE: single-phase | **HEAT PRODUCTION:** almost none | **CURE TIME:** UV 4-5 min., UV/LED 120 sec.

30 G

THICKNESS



FLEXIBILITY



NEW

PERFECT NAIL

ACRYL
GEL
PRIME

Clear

ÉVI DARABOS'
FAVORITE



COVER NUDE
ACRYL GEL PRIME



PNZ4068

COVER ROSE
ACRYL GEL PRIME



PNZ4069

CLEAR
ACRYL GEL PRIME



PNZ4070

MEGA WHITE
ACRYL GEL PRIME



PNZ4071

BABYBOOMER WHITE
ACRYL GEL PRIME



PNZ4072

BABY PINK
ACRYL GEL PRIME



PNZ4073

COVER DARK
ACRYL GEL PRIME



PNZ4074

TUBE SQUEEZER

■ Plastic tube squeezer with metallic rollers

This tool helps you to „forward” the remaining product at the bottom of the AcrylGel Prime tube, and you can squeeze out the whole content of the tube, leaving no product to waste. The rollers are made of aluminum, so this durable tool will last you a long time. Using this tool also helps to avoid getting air bubbles in the product.

PC PNDNY045

NEW



FAVORITE OF
STUDENTS

PERFECT ACRYLGEL

■ AcrylGel in a container

Despite its thick consistency, it is easy to shape as long as needed. This product combines the benefits of gel and acrylic builder materials: applicable in a few steps, stays put and easy to file. It provides excellent adhesion, and it only requires a liquid primer as base. Suitable for strengthening the natural nail and sculpting extensions both with nail forms and reverse tips.

PERFECT TIP: If the product starts sticking to the bristles, dampen your brush with Perfect AcrylGel Solution. Use an Art & Corrector Pen silicone tool to avoid accidentally moving the nail form and to minimize waste. Without applying excessive pressure, simply roll the AcrylGel onto the nail plate for shaping.

PHASE: single-phase | **HEAT PRODUCTION:** high | **CURE TIME:** UV 4-5 min., UV/LED 120 sec.

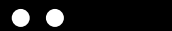
15 G

50 G

THICKNESS



FLEXIBILITY

CLEAR
ACRYLGEL

15 G

PNZ4053

50 G

PNZ4062

WHITE
ACRYLGEL

PNZ4054

COVER
ACRYLGEL

PNZ4055

PNZ4060

PINK
ACRYLGEL

PNZ4056

COVER NUDE
ACRYLGEL

PNZ4059

COVER GLITTER
ACRYLGEL

PNZ4061

FOR ACRYLGEL
SHAPING &
CLEANSING

ACRYLGEL SOLUTION

■ Solution developed for AcrylGel

Perfectly suitable for working with AcrylGel, cleaning the brush and removing the tacky layer. Contains no fragrance and color additives, so it causes no discoloration in the AcrylGel.

PLEASE NOTE: Avoid overusing AcrylGel Solution as it may overthin the product, causing lifting and/or small bubbles.

100 ML PNZ4057

ACRYLGEL TIP KIT

■ Perfect AcrylGel Tips

Designed specifically for the Perfect AcrylGel, this clear plastic tip set helps minimize building time. The tips allow achieving the exact length desired, without any waste. They also minimize filing time, as they deliver a consistent and perfectly smooth surface. The tips are reusable.

120 PCS / PACK PNTGY005



THE SMILE LINE
for the French
building technique

STRAIGHT LINES
for determining the
length of the nail
to build

**THE TIPS ARE
REUSABLE**

ACRYLGEL KIT

■ AcrylGel starter kit

The best choice if you like AcrylGel or if you have not tried it before! Purchase your favorites in a set and **save 10%** of the single price!

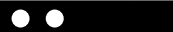
PHASE: single-phase | **HEAT PRODUCTION:** high | **CURE TIME:** UV 4-5 min., UV/LED 120 sec.

KIT PNKG016

THICKNESS



FLEXIBILITY



CONTENTS

- 15 G AcrylGel Clear
- 15 G AcrylGel White
- 15 G AcrylGel Cover
- DB Basic Line Acryl Ecset #6



**SAVE 10%
WHEN
PURCHASING
A SET**



GLUE GEL

■ Thick consistency gel with adhesive effect

As opposed to traditional adhesives, this product contains no cyanoacrylates and leaves no foggy residue on nail art pieces, so these retain their original beauty. The elements of the design are movable until the nails get under the lamp. Rhinestones and crystals are securely and reliably enclosed, so even lower quality stones are less likely to fall off. The slightest amount of UV light initiates polymerization, making this product highly suitable for securing larger nail art elements or clusters. Given the product's flexibility, it is durable on nails coated with gel polish as well. Can be filed or soaked off.

CURE TIME: UV 2–3 min., UV/LED 60 sec.

15 ML PNZ076

THICKNESS	● ● ● ●
FLEXIBILITY	● ● ● ●
SOLUBILITY	● ● ● ●



TRANSFERFOIL GEL

■ Gel for transfer foils

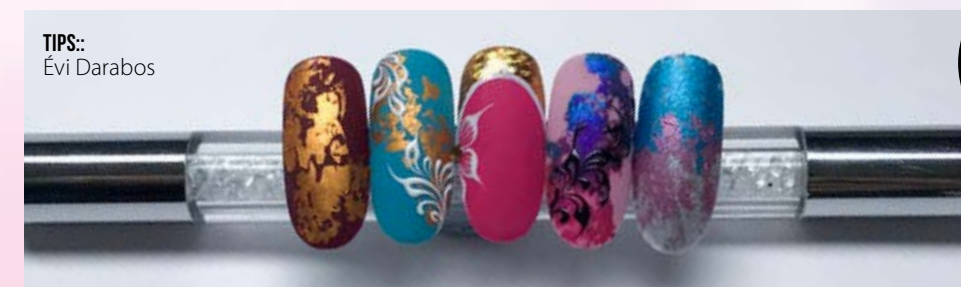
Thick, transparent gel with a sticky effect for the application of transfer foils. It can be applied onto any cured and then buffed surface and color gel polish, since it causes no discoloration on the surface. The clean and dry piece of transfer foil can be re-applied to the same surface to cover the spots that might have been missed. A flexible top gel is recommended as a finishing touch.

CURE TIME: UV 1 min., UV/LED 30 sec.

PERFECT TIP: After curing the Transferfoil Gel, firmly press the foil onto the sticky surface, then quickly pull away. Recommended for the patchwork technique.

15 ML PNZ110

THICKNESS	● ● ● ●
FLEXIBILITY	● ● ● ●
SOLUBILITY	● ●



TIPS:
Évi Darabos

SEE
TRANSFER FOILS
ON PAGE 153.





FOR
VERY THIN
LINES

SPEED ART LINE

■ Highly pigmented, no-cleanse color gel with a thin applicator brush

This highly pigmented, no-cleanse nail art gel has a special brush applicator to allow the most precise application and for drawing extremely thin lines. Before surface application, the nails should be cleansed and provided with a flexible top gel. It cures to shiny, so it requires no top-coating. However, if you wish to apply a top gel, do not allow the product to cure completely to ensure the proper adhesion of the top gel.

PERFECT TIP: You might want to flash cure your design after the painting of each pattern detail.

CURE TIME: UV 1 min., UV/LED 30 sec.

8 ML

THICKNESS	●
FLEXIBILITY	● ● ● ● ●

BLACK
SPEED ART



PNSA02

RED
SPEED ART



PNSA03

PINK
SPEED ART



PNSA04



FLEXIBLE,
STRETCHABLE

SPIDER GEL

■ Stretchable, no-cleanse gels with high pigment content

Elastic and flexible, no-cleanse color gel with high pigment content for creating a cobweb-like pattern with the finest threads. Suitable for use on matte surfaces; you can also use a dotting tool pen or a nail art brush to create the desired pattern on cured flexible, no-cleanse shine gel. Cures to shiny, requires neither cleansing nor top gel.

CURE TIME: UV 4 min., UV/LED 3 min. (min. 36W lamps)

5 G

THICKNESS	● ● ● ● ● ●
FLEXIBILITY	● ● ● ● ●
SOLUBILITY	●

WHITE
SPIDER GEL



PNPG19

BLACK
SPIDER GEL



PNPG20



WATERWAY CLEAR GEL

■ Flexible, transparent base gel for the Waterway technique

A flexible, transparent base gel applicable over any cured – shiny or matte – surface as well as on colored gel polish, as it won't cause any discoloration. Suitable for the bubble technique, and also for inverted nail art. Requires cleansing as curing leaves a tacky dispersion layer. A flexible top gel is recommended as a finishing touch.

CURE TIME: UV 1 min., UV/LED 30 sec.

PLEASE NOTE: You may not want to combine this product with lacgels of thicker consistency, as those can't spread on the Waterway Clear Gel well enough.

8 ML PNZ089

THICKNESS	● ● ● ● ●
FLEXIBILITY	● ● ● ● ●
SOLUBILITY	● ● ● ● ●



APPLY OVER
ANY GEL POLISH
COLOR

WATERWAY COLOR GEL

■ Highly pigmented, no-cleanse color gels for the Waterway technique

Highly pigmented, colored gels for the Waterway technique. Use Waterway Base Gel for “wet-on-wet” or “waterway floating” patterns. The slight flexibility only allows this product to be on used rigid or reinforced base nails – e.g. hard gel and acrylic nail enhancements and nails reinforced using Elastic Hard Gel or Fiber Vitamine Gel. No cleansing, shiny surface after curing. A flexible top gel is recommended as a finishing touch.

CURE TIME: UV 2–3 min., UV/LED 90 sec.

PLEASE NOTE: Waterway Color Gels will not spread on sticky layers.

5 G

THICKNESS	● ●
FLEXIBILITY	● ●
SOLUBILITY	● ● ●

BLACK
WATERWAY COLOR GEL



PNZ3001

BLUE
WATERWAY COLOR GEL



PNZ3002

RED
WATERWAY COLOR GEL



PNZ3003

CLARET
WATERWAY COLOR GEL



PNZ3004



MORE THAN
50 COLORS



Delux Gel

■ Highly pigmented, no-cleanser color gels, providing great coverage in one layer

A medium thick, no-cleanser color gel with high pigment content; provides excellent coverage in one layer. Cures to shiny, requires no top gel. Highly suitable for the one-move technique, surface nail art and creating colored French edge. Don't allow it to cure completely if you want to apply a top layer, to allow proper adhesion for the top gel. The colors will mix well.

CURE TIME: UV 2–3 min., UV/LED 90 sec.

5G PNZ2001-2060

THICKNESS	● ● ●
FLEXIBILITY	● ●
SOLUBILITY	●



Cream Gel

■ Thick, no-cleanser cream gel for nail art

A thick decor cream gel requiring no cleansing, suitable for surface nail art. Suitable for use on matte surfaces; you can also use this product to paint the desired pattern on half-cured no-cleanser, flexible shine gel. For multiple layers, cure each layer separately halfway. Cures to shiny, requires neither cleansing nor top gel.

CURE TIME: UV 3 minutes, UV/LED 60 seconds

PERFECT TIP: This gel is more rigid, so it is only suitable for surface designs on smaller areas.

5G PNPG06-18

THICKNESS	● ● ● ●
FLEXIBILITY	● ●
SOLUBILITY	●



ÉVI DARABOS'
FAVORITE



NAILS:
Évi Darabos

FOR 3D
DECORATIONS

PLASTILINE GEL

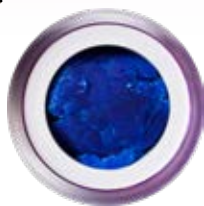
Very thick, putty-like gel

Any desired tone can be achieved by mixing the base colors. The high thickness provides firm adhesion to the nail surface. The silicone tip Art & Corrector Pen allows for the easy shaping of even the most intricate details. Add Delux Gel to soften the product. Use the blobs you took out from the jar to create any 3D shapes, even on a silicone sheet. A pro tip: reseal the adhesive tape on the jar after use to prevent the material from drying out. No cleansing and no top gel required.

CURE TIME: UV 2–3 min., UV/LED 60 sec.

5 G

THICKNESS	● ● ● ● ● ●
FLEXIBILITY	● ●
SOLUBILITY	●

BLUE
PLASTILINE
GEL

PNPG002

YELLOW
PLASTILINE
GEL

PNPG003

RED
PLASTILINE
GEL

PNPG004

GREEN
PLASTILINE
GEL

PNPG005

FOR
LIQUID STONE
TECHNIQUE

LIQUID STONE CLEAR GEL

Medium thick, transparent liquid stone gel

Use it to create 3D nail art designs with liquid stone technique or cover the entire nail surface for a glittery-holo effect. You can add any kind of pigment, glitter, chrome powder, confetti or any other nail art material. Use a greater amount of the product on any nail art material for a "magnifying glass" effect.

CURE TIME: UV 2 min., UV/LED 60 sec.

PERFECT TIP: Use Liquid Stone Frames to enclose the customized Liquid Stone Gel compositions. To make sure that the material gets fully cured, liquid stones thicker than 1 mm should be created in several steps.

5 G PNZ080

THICKNESS	● ● ●
FLEXIBILITY	● ● ●
SOLUBILITY	●

LIQUID STONE COLOR GEL

Medium thick, multicolor nail art gel with a holographic effect

Use it to create 3D nail art designs with liquid stone technique or cover the entire nail surface for a glittery-holo effect.

CURE TIME: UV 2 min., UV/LED 60 sec.

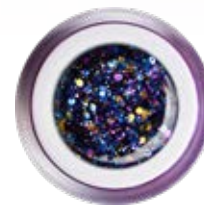
PERFECT TIP: Use Liquid Stone Frames to enclose the customized Liquid Stone Gel compositions. To make sure that the material gets fully cured, liquid stones thicker than 1 mm should be created in several steps.

5 G

THICKNESS	● ● ●
FLEXIBILITY	● ● ●
SOLUBILITY	●

EMERALD
LIQUID STONE
GEL

PNZ081

OPAL
LIQUID STONE
GEL

PNZ082

GOLD
LIQUID STONE
GEL

PNZ091

SILVER
LIQUID STONE
GEL

PNZ092

FOR
LIQUID STONE
TECHNIQUE

LIQUID STONE FRAMES

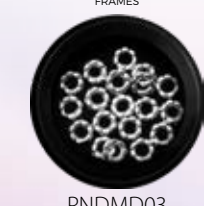
Miniature metallic frames for the liquid stone technique

Apply a small amount of Glue Gel on the nail, then position the chosen frame so that the Glue Gel surrounds the frame on all sides. Cure for 5-10 seconds. Starting from the middle, fill the frame with Liquid Stone Gel and cure it, then apply a flexible top gel onto the nail surface and the liquid stone gel (e.g. Cool Shine Ever Gel).

PERFECT TIP: Do not apply the top gel onto the top surface of the frame itself.

OVAL GOLD
LIQUID STONE
FRAMES

PNDMD02

FLOWER SILVER
LIQUID STONE
FRAMES

PNDMD03

FLOWER GOLD
LIQUID STONE
FRAMES

PNDMD04

ACRYLIC

powders

Standard speed acrylic powders

■ For both beginners and experienced nail technicians

Standard speed acrylic powders of extra fine grain size. They provide maximal adhesion and a creamy texture. Remarkable bendability due to the flexible nature of the products. Drying time is influenced by the chosen liquid.

CLEAR POWDER

■ Transparent acrylic builder powder

Perfectly highlights the base colors. Excellent in combination with nail art color gels (Delux gel, Cream gel), for uses such as Sugar Effect technique or the matting of gel polish.

15 ML PNP0001

50 ML PNP0006

140 G PNP0007



SALON CLEAR POWDER

■ Crystal clear, transparent acrylic builder powder

In comparison with the Clear powder, it is even more transparent, crystal clear and more finely milled.

5 ML PNP0079

15 ML PNP0080

50 ML PNP0085



WHITE POWDER

■ White acrylic builder powder

Its slower drying time makes it ideal for creating smile lines by wiping with a brush.

5 ML PNP0010

15 ML PNP0011



FOR
BABY BOOMER
TECHNIQUE

WHITE BOOMER POWDER

■ Slightly transparent, milky white acrylic powder

Slightly clear for creating the perfect gradient. Ideal for the Baby Boomer technique.

15 ML PNP0060

50 ML PNP0062

MILKY
WHITE

PINK POWDER

■ Clear, light pink acrylic builder powder

Perfectly highlights the color of the nail bed. Suitable for French nails without nail bed extension and changing the tone of the nail bed extension powder.

15 ML PNP0021



NAILS:
Évi Darabos

GLASS ROSE POWDER

■ Transparent, rose acrylic builder powder

Rose acrylic builder powder with a glassy transparent effect recommended for creating glass-like free edges and decorations of unique color effects. Non-yellowing, thus provides clear and long lasting colors.

15 ML PNP0043



GLASS PINK POWDER

■ Transparent, pinkish acrylic builder powder

Pinkish acrylic builder powder with a glassy transparent effect recommended for creating glass-like free edges and decorations of unique color effects. Non-yellowing, thus provides clear and long lasting colors.

15 ML PNP0044

GLASSY
TRANSPARENT
EFFECT

COVER BOOMER POWDER

■ Slightly clear, peachy pink acrylic powder

The natural tone fits any skin tone well. Slightly clear for creating the perfect gradient; ideal choice for Baby Boomer technique and even total coverage. Ideal for French nail infills.

15 ML PNP0057

50 ML PNP0059

SLIGHTLY
CLEARFOR
BABY BOOMER
TECHNIQUE



PINK MASQUE POWDER

■ Acrylic nail extension powder of natural nude tone

Matches a variety of skin tones. Suitable for covering up any imperfections of the nail bed, and allows seamless infills. The strong pigmentation ensures reliable coverage for nail surface imperfections and the free edge.

15 ML PNP0003

50 ML PNP0045

140 G PNP0052



SALON COVER PINK POWDER

■ Acrylic nail bed extension powder with a cool purple tone

Extra finely milled, nail bed extension acrylic powder with a cool purple undertone. Highly pigmented, ensuring a long lasting color.

5 ML PNP0081

15 ML PNP0082

50 ML PNP0086

COOL
PURPLE
UNDERTONE



PEACH MASQUE POWDER

■ Acrylic nail bed extension powder of peachy tone

This powder has a beautiful, highly pigmented, peachy tone and provides spotless and perfectly consistent coverage.

15 ML PNP0054

140 G PNP0087

IRELAND'S
FAVORITE

High speed acrylic powders

■ For experienced nail technicians and competitors

Finely milled acrylic powders with faster drying time. They have a creamy texture and provide maximum adhesion. These products are flexible, ensuring remarkable bendability. Can be used with both standard and high speed liquids.

PERFECT TIP: In colder ambient temperatures, nail technicians of all skill levels can benefit from the properties of these products.

SPEED CLEAR POWDER

■ Crystal clear acrylic builder powder

Builder powder with the same characteristics as the Clear powder, but a roughly one and a half times quicker drying time. Besides offering excellent color retention, this product allows for easy sculpting and consistent application.

15 ML PNP0013

50 ML PNP0014

140 G PNP0047



SPEED EXTRA WHITE POWDER

■ Brilliant white acrylic builder powder

The product's bluish white undertones ensure a dazzling white color. Besides offering excellent color retention, this product allows for easy sculpting and consistent application.

15 ML PNP0019

50 ML PNP0020

140 G PNP0049



BRILLIANT
WHITE



SPEED PINK POWDER

■ Light pink acrylic builder powder

Perfectly highlights the color of the nail bed. Suitable for French nails without nail bed extension and changing the tone of the nail bed extension powder.

15 ML PNP0015

50 ML PNP0016

140 G PNP0048



SPEED DARK PINK POWDER

■ Acrylic builder powder of darker pink tone

Provides a beautiful contrast to the white free edge of nails with no nail bed extension. Perfect for building the nail bed structure for extreme shapes.

15 ML PNP0017

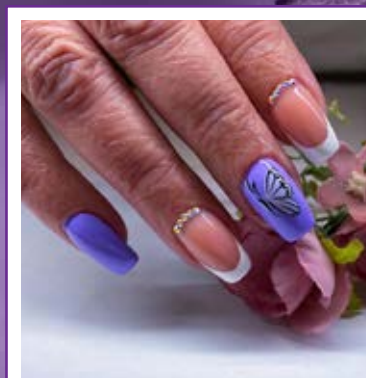
50 ML PNP0018



NAILS:
Abigél Krupa

NAILSTAR

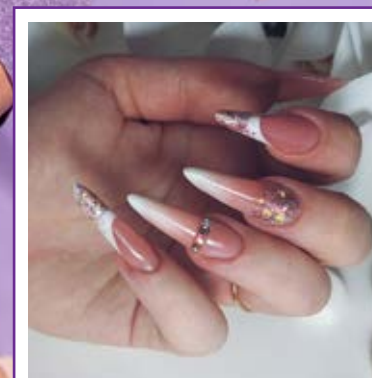
ARE YOU LOOKING
FOR A CHALLENGE?
NOMINATE YOUR BEST WORK.



Dominika Kiss-Horváth
Butterfly



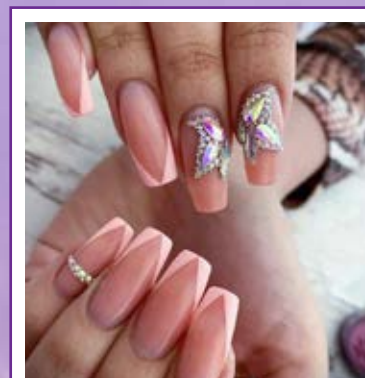
115



Noémi Vékesné Balázs
French Glitter



107



Rita Regina Takács
V-French



119



Luxury Kit Gel Collections

■ Gel kit for trainees or as a trial set for Perfect Nails products



LUXURY PREMIUM KIT

■ Extra flexible gels for building size XS nails

CONTENTS

KIT

PNKG011

15 G Premium Gel

15 G Extreme White Gel

15 G Cover Gel

100 ML Gel Cleaner

15 ML Top Gel

15 ML Perfect Prep

15 ML Perfect Bond Primer

SAVE 15%
WHEN
PURCHASING
A SET



LUXURY PREMIUM - SMART KIT

■ Extra flexible gels for building size XS nails; includes a UV/LED lamp with 21 energy-saving LEDs

CONTENTS		KIT	PNKG072				
15 G	Premium Gel	15 G	Extreme White Gel	15 G	Cover Gel		
100 ML	Gel Cleaner	15 ML	Top Gel	15 ML	Perfect Prep	15 ML	Perfect Bond Primer
1 DB	Smart Universal UV/LED Lamp						

SAVE 9%
WHEN
PURCHASING
A SET



LUXURY PLATINUM KIT

■ Medium thick gels for building size M nails

CONTENTS

KIT

PNKG008

15 G

Platinum Gel

100 ML

Gel Cleaner

15 G

Extreme White Gel

15 ML

Top Gel

15 G

Cover Gel

15 ML

Perfect Prep

15 ML

Perfect Bond Primer

EUROPE'S
FAVORITE



SAVE 16%
WHEN
PURCHASING
A SET

LUXURY PLATINUM - UNICORN PINK KIT

■ Medium thick gels for building size M nails; includes a UV/LED lamp with 30 energy-saving LEDs

CONTENTS

KIT

PNKG069

15 G

Platinum Gel

15 G

Extreme White Gel

15 G

Cover Gel

100 ML

Gel Cleaner

15 ML

Top Gel

15 ML

Perfect Prep

15 ML

Perfect Bond Primer

1 DB

Unicorn Pink UV/LED Lamp

SAVE 9%
WHEN
PURCHASING
A SET



SAVE 15%
WHEN
PURCHASING
A SET

LUXURY CRYSTAL KIT

■ Thick gels for building size L nails

CONTENTS

KIT PNKG010

15 G Crystal Clear Gel 15 G Extreme White Gel 15 G Cover Gel
100 ML Gel Cleaner 15 ML Top Gel 15 ML Perfect Prep 15 ML Perfect Bond Primer

SAVE 9%
WHEN
PURCHASING
A SET

LUXURY CRYSTAL - SMART KIT

■ Thick gels for building size L nails; includes a UV/LED lamp with 21 energy-saving LEDs

CONTENTS

KIT PNKG071

15 G Crystal Clear Gel 15 G Extreme White Gel 15 G Cover Gel
100 ML Gel Cleaner 15 ML Top Gel 15 ML Perfect Prep 15 ML Perfect Bond Primer
1 DB Smart Universal UV/LED Lamp

SAVE 15%
WHEN
PURCHASING
A SET

LUXURY ICE KIT

■ Thick gels for building size L-XL nails

CONTENTS

KIT PNKG009

15 G Ice Gel 15 G Extreme White Gel 15 G Cover Gel
100 ML Gel Cleaner 15 ML Top Gel 15 ML Perfect Prep 15 ML Perfect Bond Primer

SAVE 8%
WHEN
PURCHASING
A SET

LUXURY ICE - UNICORN SILVER KIT

■ Thick gels for building size L-XL nails; includes a UV/LED lamp with 30 energy-saving LEDs

CONTENTS

KIT PNKG070

15 G Ice Gel 15 G Extreme White Gel 15 G Cover Gel
100 ML Gel Cleaner 15 ML Top Gel 15 ML Perfect Prep 15 ML Perfect Bond Primer
1 DB Unicorn Silver UV/LED Lamp

Luxury Kit Acrylic Collections

■ Acrylic kit for trainees or as a trial set for Perfect Nails products

SAVE 16%
WHEN
PURCHASING
A SET

LUXURY FRENCH TRADITIONAL X KIT

■ Recommended for traditional French nails

Standard acrylic powders with high speed liquid.

CONTENTS

KIT PNKP014

15 ML Clear Powder 15 ML White Powder 15 ML Pink Powder
100 ML Intensive Liquid 30 ML Brush Cleaner 30 ML Perfect Prep
15 ML Perfect Bond Primer

SAVE 16%
WHEN
PURCHASING
A SET

LUXURY FRENCH TRADITIONAL KIT

■ Recommended for traditional French nails

Standard acrylic powders with standard speed liquid

CONTENTS

KIT PNKP013

15 ML Clear Powder 15 ML White Powder 15 ML Pink Powder
100 ML Liquid 30 ML Brush Cleaner 30 ML Perfect Prep 15 ML Perfect Bond Primer

SAVE 16%
WHEN
PURCHASING
A SET

LUXURY FRENCH SPEED KIT

■ Recommended for traditional French nails

Acrylic powders from the speed range with standard speed liquid.

CONTENTS

KIT PNKP017

15 ML Speed Clear Powder 15 ML Speed Extra White Powder 15 ML Pink Powder
100 ML Liquid 30 ML Brush Cleaner 30 ML Perfect Prep 15 ML Perfect Bond Primer

SAVE 16%
WHEN
PURCHASING
A SET



LUXURY FRENCH SPEED X KIT

■ Recommended for traditional French nails
Acrylic powders from the speed range with high speed liquid.

CONTENTS

KIT

PNKP018

15 ML

Speed Clear Powder

15 ML

Speed Extra White Powder

15 ML

Pink Powder

100 ML

Intensive Liquid

30 ML

Brush Cleaner

30 ML

Perfect Prep

15 ML

Perfect Bond Primer

SAVE 16%
WHEN
PURCHASING
A SET



LUXURY COVER TRADITIONAL KIT

■ Recommended for French nails with nail extension
Standard acrylic powders with standard speed liquid.

CONTENTS

KIT

PNKP011

15 ML

Clear Powder

15 ML

White Powder

15 ML

Pink Masque Powder

100 ML

Liquid

30 ML

Brush Cleaner

30 ML

Perfect Prep

15 ML

Perfect Bond Primer

SAVE 16%
WHEN
PURCHASING
A SET



LUXURY COVER TRADITIONAL X KIT

■ Recommended for French nails with nail extension
Standard acrylic powders with high speed liquid.

CONTENTS

KIT

PNKP012

15 ML Clear Powder

15 ML White Powder

15 ML Pink Masque Powder

100 ML Intensive Liquid

30 ML Brush Cleaner

30 ML Perfect Prep

15 ML Perfect Bond Primer

LUXURY COVER SPEED KIT

■ Recommended for French nails with nail extension
Acrylic powders from the speed range with standard speed liquid.

CONTENTS

KIT

PNKP015

15 ML

Speed Clear Powder

15 ML

Speed Extra White Powder

15 ML

Pink Masque Powder

100 ML

Liquid

30 ML

Brush Cleaner

30 ML

Perfect Prep

15 ML

Perfect Bond Primer

SAVE 16%
WHEN
PURCHASING
A SET



GREECE'S
FAVORITE

LUXURY COVER SPEED X KIT

■ Recommended for French nails with nail extension
Acrylic powders from the speed range with high speed liquid.

CONTENTS

KIT

PNKP016

15 ML

Speed Clear Powder

15 ML

Speed Extra White Powder

15 ML

Pink Masque Powder

100 ML

Intensive Liquid

30 ML

Brush Cleaner

30 ML

Perfect Prep

15 ML

Perfect Bond Primer

SAVE 16%
WHEN
PURCHASING
A SET







Premium nail files

Very strong and durable, half moon shaped zebra files that last up to twice as long as traditional files. The foam-covered inner core (a central plastic sheet) guarantees a more flexible and softer filing surface.

PREMIUM #80/80

For removing acrylic nails.

PC PNR0613

PREMIUM #100/100

For removing acrylic/gel/AcrylGel nails and gel polish.

PC PNR0614

PREMIUM #150/150

For filing and shaping acrylic nails.

PC PNR0615

PREMIUM #180/180

For filing and shaping gel nails, and refining acrylics.

PC PNR0616

PREMIUM #100/180

For removing/filing/shaping acrylic/gel/AcrylGel nails.

PC PNR0617

PREMIUM MIX #180/220

A combined file and buffer for the gentle preparation of natural nails, surface finishing and shaping.

PC PNR0618



Supreme Waterproof nail files

The surface of the Supreme files feature a special “sandpaper-like” coating, and have water-repellent qualities, allowing for sanitization. Any filing residue and dust can be almost completely removed with a wet nail brush. The Supreme Waterproof files last up to 4 times longer than traditional files.

Shaping, refining

For shaping and refining nail enhancements and the surface of the natural nail.



WATERPROOF #100/100

For removing acrylic/gel/AcrylGel nails and gel polish.

PC PNR0622

WATERPROOF #150/150

For filing and shaping acrylic nails.

PC PNR0623

WATERPROOF #180/180

For filing and shaping gel nails, and refining acrylics.

PC PNR0624

WATERPROOF #220/220

For refining acrylic/gel/AcrylGel nail enhancements, and refining the surface of the natural nail.

PC PNR0625

WATERPROOF #150/220

For filing and shaping acrylic nails, as well as refining acrylic/gel/AcrylGel nail enhancements, and refining the surface of the natural nail.

PC PNR0626

WATERPROOF LACGEL FINE/MEDIUM

For refining acrylic/gel/AcrylGel nail enhancements, for filing and shaping gel nails, and refining the surface of the natural nail.

PC PNR0627

BESTSELLER

PURPLE FOAM, WIDE #80/80

For refining the acrylic nail surface.

PC PNR0604



ORANGE FOAM, WIDE #100/100

For refining the acrylic/gel/AcrylGel nail surface and prepping the natural nails.

PC PNR0606



BLUE FOAM, WIDE #180/180

For refining the acrylic/gel/AcrylGel nail surface.

PC PNR0605



WHITE FOAM CURVED #100/100

For refining the acrylic/gel/AcrylGel nail surface and prepping the natural nails.

PC PNR0601



RECTANGULAR BLACK #100/180

For refining acrylic/gel/AcrylGel nail enhancements, for filing, shaping and prepping the natural nail, and for gel polish removal.

PC PNR0301



RECTANGULAR RED MYLAR #80/80

For removing acrylic and gel nails.

PC PNR0304



TEARDROP #80/100

For shaping and refining acrylic/gel/AcrylGel nail enhancements, for gel polish removal, and for shaping the natural nail. The narrow side enables high precision filing even along the nail walls. The wider side is suitable for filing larger surfaces.

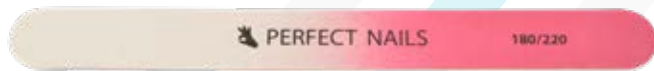
- BLACKPC PNR0010
- WHITEPC PNR0011



OMBRE WOODEN NAIL FILE #180/220

For shaping the natural nail and nail enhancements, and for filing the smile line. This slightly curved tool facilitates shaping, since the concave side enables you better access to the nail sides and corners. It is much easier to shape the smile line, to refine the sides and create the endings of the smile line with pinpoint accuracy.

PC PNR0628



ROBUST MIX #100/180

For refining acrylic/gel/AcrylGel nail enhancements, for filing, shaping and prepping the natural nail, and for gel polish removal.

PC PNR0610



BUFFER BLOCK

4-sided buffer block

Use it to remove surface shine from natural nails, and to refine the surface of nail extensions.

- WHITE #150/150PC PNRB001
- PINK #150/150PC PNRB002
- OMBRE #180/180PC PNRB026
- PURPLE #120/120PC PNRB027



THREE-WAY BUFFER BLOCK #100/180/180

3-sided buffer block

Use it to remove acrylic/gel/AcrylGel and gel polish residue.
CAUTION! Do not use on the natural nail to remove surface shine.

- PURPLE #60/100/100PC PNRB003
- ORANGE #100/180/180PC PNRB004



Polishing for shine

Recommended for polishing acrylics and the natural nail to achieve surface shine. These tools are a perfect alternative for Japanese manicure or polisher kits to ensure long-lasting, high shine.

BUFFER HALFMOON GREEN #280/280

■ Surface refiner with a halfmoon shape

As a last step for refining the surface of acrylics and the natural nail before final polishing for high shine.

PC PNR0612



HALFMOON ORANGE SUPER SHINER #400/3000

■ Double-sided surface refiner/polisher with a halfmoon shape

Use the orange side for refining the nail surface, then polish the nails with the white side to achieve a long-lasting, high shine.

PC PNR0611



THREE-WAY SHINER #240/800/3000

■ 3-sided surface refiner/polisher shaped like a nail file

Use the purple and the white side for refining the nail surface, then polish the nails with the grey side to achieve a long-lasting, high shine.

PC PNR0400



TWO-WAY SUPER SHINER #600/3000

■ Double-sided surface refiner/polisher shaped like a block/nail file

Use the green side for refining the nail surface, then polish the nails with the white side to achieve a long-lasting, high shine.

NAIL FILE PC PNR0404

BUFFER PC PNR012



DISTRIBUTOR WANTED

“



Desire to Create

”

We aim to form relationships with such talented and ambitious entrepreneur partners, who can embrace the highest standards, expectations and values to contribute to the brand's overall success.

BUILDER & nail art brushes



Acrylic builder brushes

BASIC LINE ACRYL

■ Acrylic builder brush with natural bristles

The special, flattened brush base and pointed tip facilitate the spreading of product and the creation of an elegant smile-line. This brush is suitable for short nails and working with a small amount of material. Recommended for trainees.

#6

PC

PNEP030

#8

PC

PNEP029



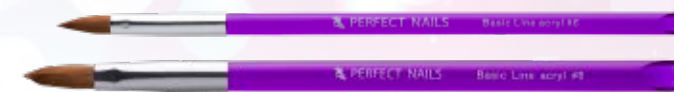
#6

BASIC LINE
ACRYL



#8

BASIC LINE
ACRYL



ACRYL BUILDER

■ Acrylic builder brush with flattened head and natural bristles

This acrylic builder brush has a flattened head and a pointed tip. The bristles are more bendy, enabling a more flexible handling of product. The jewel brush features a diamond cut metal handle and cap. Recommended for daily salon work.

#6

PC

PNEP026

#8

PC

PNEP027

#10

PC

PNEP028

FLEXIBLE
HANDLING



#6

ACRYL BUILDER
BRUSH



#8

ACRYL BUILDER
BRUSH



#10

ACRYL BUILDER
BRUSH



DIAMOND MASTER ACRYL

■ Acrylic master brush with natural bristles

The extra thick, hard-packed, stronger bristles make this brush soak up liquid better, and facilitate the pushing and spreading of product. The brush has a precision tip that helps to achieve a perfect smile line. Recommended for championships, quick salon work, and for sculpting longer nails. The jewel brush features a diamond cut metal handle and cap.

#10

PC

PNEP018

#12

PC

PNEP019

OUR
CHAMPIONS'
FAVORITE

FACILITATE
THE PUSHING
& SPREADING



#10

DIAMOND MASTER
ACRYL



#12

DIAMOND MASTER
ACRYL



Gel builder brushes



BASIC LINE GEL #6

■ Straight-edge gel builder brush with synthetic bristles

Recommended specifically for trainees, and designed to facilitate the shaping of the smile line and the application of the right amount of product.

PC PNEZ023



GEL BUILDER

■ Straight-edge gel builder brush with synthetic bristles

#4 has a smaller brush head that makes it ideal for shorter nails and for swiping the smile line. The larger brush head of #6 comes in handy when a larger amount of product needs to be applied and for extreme nail shapes.



#4 PC PNEZ020

#6 PC PNEZ021

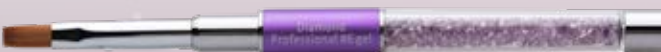


DIAMOND PROFESSIONAL GEL #6

■ Diamond handle gel builder brush with synthetic bristles

We recommend it for sculpting professional gel nails. Excellent choice for our clear and nail bed extension materials.

PC PNEZ022



GEL LAQUER #6

■ Oval profile gel blder brush with synthetic bristles

The flattened and rounded tip facilitates pushing the builder gel towards the rear skin fold and wiping the French smile line.

PC PNEZ028



GEL GRANDE

■ Larger, oval profile gel builder brush with natural bristles

Specially designed to conform to the nail bed in order to facilitate precise application and spreading of gels (including colored materials). The perfect choice for less experienced nail technicians. Also recommended for applying AcrylGel.

PC PNEZ026



GEL PICCOLO

■ Smaller, oval profile gel builder brush with natural bristles

Special brush with shorter bristles. The design conforms to the nail bed in order to facilitate precise application and spreading of gels (including colored materials). Also recommended for applying AcrylGel.

PC PNEZ027



Nail Art brushes

CARO-LINE 1

■ Slimmed tip nail art brush with natural bristles

This brush can take up and hold material in larger quantities. We developed this brush in co-operation with Carla Nappi, Italian champion.

PC PNED043

AQUARELLE #4

■ Aquarelle nail art brush with natural bristles

Recommended for the aquarelle technique, gel painting and working with Plastiline Gel. The rounded base and the pointed tip make this brush ideal for painting smaller and larger designs as well.

PC PNED014

ONEMOVE #1

■ Wedge tip brush with natural bristles

Recommended for the one-move technique.

PC PNED030

ONEMOVE REVO

■ Wedge tip brush with natural bristles

The enhanced version of the OneMove #1 brush. A denser tip brush. Allows for more precise nail art designs even on larger areas.

PC PNED042

NAIL ART 3D

■ Flattened conical nail art brush with pointed tip and natural bristles

Recommended for gel painting, Plastiline Gel, and creating acrylic flowers and other 3D effects.

#2 PC PNED032

#4 PC PNED033

MINERAL ART

■ Snake tongue-shaped nail art brush with natural bristles

The synthetic bristles form a snake tongue shape and allow for the application of multiple colors at once, while maintaining the contours between colors. With the variation of colors and shapes, you can achieve a stone/geode effect on the nails.

PC PNED051

NAIL ART

■ Extra slim nail art brush with synthetic bristles

Suitable for painting tendril designs, thin straight lines, gel contours and painting a narrow French edge.

SHORT PC PNED034

MEDIUM PC PNED035

LONG PC PNED036

MINI NATURAL #000

■ Super slim (4mm) nail art brush with natural bristles

Recommended for precision painting with the aquarelle technique, creating fine lines to decorate flowers and extra thin contours.

PC PNED039





NAIL ART 300 #1

■ Short nail art brush with natural bristles

Recommended specifically for acrylic paints and the aquarelle technique to create fine lines and tendrils.

PC PNED011



ART & PAINT

■ Nail art brush with natural bristles, a flattened head and a curved edge

Suitable for gel painting, as well as the One move and the Zhostovo techniques.

PC PNED044

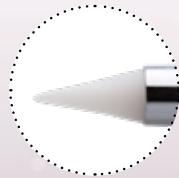


ACRYLIC NAIL ART #2

■ Thin, pointed tip brush with natural bristles

Excellent for acrylic nail art, smaller swirls, lace patterns and acrylic type painting.

PC PNEP002

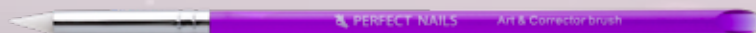


ART & CORRECTOR PEN

■ Multifunctional silicone tool

Flexible, fine tip, steady neck. Suitable for removing materials from the skin, cleaning the cuticle, creating lace and 3D acrylic patterns, placing/arranging minor decorative elements on the nails, applying the AcrylGel and Spider Gel materials as well as applying rhinestones onto the nail surface.

PC PNED049



NAIL ART BRUSH SET

■ Extra slim nail art brush set with synthetic bristles

Suitable for creating designs with the finest details using Delux Gel, Cream Gel and other color gels, lacgels and acrylic paints.

3 PCS / PACKAGE PNED050



PERFECT LINE

■ Elongated, slim-tip nail art brush with natural bristles

The rigid neck and the flexible tip of the brush facilitate the painting of thin lines and fine tendrils.

S

PC PNED047

M

PC PNED046



OMBRE

■ Comb-like brush with thinned out tip and natural bristles

Suitable for creating seamless gradients with gel, gel polish and acrylic paints. Perfect for Ombre and Baby boomer effects.

PC PNED048



SHADING/OMBRE SPONGE

■ Double-headed sponge applicator for the Ombre technique

Allows for easier application of nail art powders and flakes. Use this sponge to achieve seamless color gradients. Ideal for Ombre, Baby boomer and Airbrush techniques. The 2 sponge heads are replaceable, and the handle features sparkly crystals.

PERFECT TIP: Please store this tool horizontally and clean thoroughly after use. Make sure to wait for the tool to dry completely before using it again. Aroma, Gel or Brush Cleaner is recommended for cleaning the tool heads.

SPONGE

PC PNSE650

REPLACEMENT HEADS

4 PCS / PACKAGE PNSE651



TIPS AND

nail forms



Nail tips

ULTRA FORM TIP

Straight, rectangular tips with parallel sides and a shallow C-curve. They have a regular contact area and a medium size support surface. Ultra Form Tips are thinner, allowing for quicker filing when blending the nail enhancement with the natural nail. These tips are available from size #1 to #10 in natural and clear versions.

NATURAL	15 PCS	PNTUF11-20	50 PCS	PNTUF51-60
NATURAL KIT	100 PCS	PNTUF00		
CRYSTAL	15 PCS	PNTCU11-20	50 PCS	PNTCU51-60
CRYSTAL KIT	100 PCS	PNTCU00		



COMPETITION TIP

Professional qualities: flexible, super strong and extra thin. It is characterized by parallel sidewalls and straight sidelines. The tip has a strong curve, so you have a pinched effect for the nail enhancement. It has no support surface. These tips are available from size #1 to #10 in natural and clear versions.

NATURAL	50 PCS	PNTVN04-10
CLEAR	50 PCS	PNTVC04-10



STILETTO TIP

Stiletto tips are pre-cut to stiletto shape, and they have a narrow contact area. These tips are available from size #1 to #10 in natural and clear versions.

NATURAL	50 PCS	PNTSN51-60
CLEAR	50 PCS	PNTSC51-60





EXTRA LONG CLEAR TIP

Extra long, straight end tip with regular contact area.

10 PCS PNTELC01



EXTRA LONG STILETTO CLEAR TIP

Extra long, special stiletto-shape tip with regular contact area.

10 PCS PNTELC02



DEEP CURVE TIP

Half-hawk, medium curve tip with regular contact area. These tips are available from size #1 to #10.

15 PCS PNTDC01-10

50 PCS PNTDC51-60



FRENCH WHITE TIP

Tip with white body and narrow contact area, specifically for creating French edge nails. These tips are available from size #1 to #10.

15 PCS PNTFW10-19

50 PCS PNTFW50-59



NAIL GLUE

Extra strong adhesion, quick setting, non-discoloring tip glue.

3 G PNRA001

7,5 G PNRA010

Nail forms

BAT-SHAPE NAIL FORM – BASIC

The well-known quality of our Bat-Shape Nail Form in a slim design with extra adhesive strength. We reduced the thickness by 30% for those who prefer a thinner, more flexible nail form. The Basic version is especially suitable for our Elastic Gel all-in-one builder range.

500 PCS PNSE019



BAT-SHAPE NAIL FORM

Premium quality nail form with strong adhesion and optimal curve retention. Once placed, it stays put and retains the curve as long as needed. The nail form allows extensions up to size XL, and the precision grid facilitates the sculpting of the desired shape and length.

50 PCS PNSE012

500 PCS PNSE011



IRON NAIL FORM

Newly developed product with a thicker material. It is extremely easy to shape, keeps the desired cylindrical shape for hours, and provides excellent adhesion and strength. Using this nail form makes the job of trainees a lot easier as well. The uniqueness of our IRON nail form lies in the special layers that contain metal. Although this results in a thicker material than our other nail forms, the IRON form holds the desired shape as long as needed. The purple color of the nail form enables you to better see the transparent materials during shaping. Improved grid and guidelines help fitting the form.

200 PCS PNSE6134



PROFESSIONAL

metallic tools &

accessories



PERFECT MANICURE SCISSORS

■ Manicure scissors for professional use, made of medical grade Solingen stainless steel

These premium quality scissors feature a pair of precisely and smoothly closing cutting edges. The unique design of the blades allows a more comfortable and precise use, providing perfect cutting even at the tip of the scissors. The blades stay sharp for an extended time. Their surface has a silky-matte finish for extra comfort during use.



TIP CLIPPER

■ A straight edge tip clipper

For nail enhancement with tips, and shortening the existing nail enhancements.

PC PNSE628



CUTICLE PUSHER & SCRAPER 2 IN 1 – MANI



■ Curved cuticle pusher & scraper

Recommended for professional manicure; pushing back the cuticle and scraping off the tethered skin from the nail surface before gel polish application. The spoon-shaped head is used for pushing back the cuticle, while the curved head is suitable for scraping.

PC PNSE6129



CUTICLE PUSHER & SCRAPER 2 IN 1 – PRO

■ Professional, curved cuticle pusher & scraper

Double-sided metallic cuticle pusher & scraper for preparing the natural nail for manicure and nail enhancements. The spoon head is used for pushing back the cuticle, while the curved head is used for scraping up the tethered skin from the nail surface.

PC PNSE623



CUTICLE PUSHER & SCRAPER 2 IN 1 – FLAT

■ Straight and flat cuticle pusher & scraper

Double-sided metallic cuticle pusher & scraper for preparing the natural nail for manicure and nail enhancements. The spoon head is used for pushing back the cuticle, while the straight/flat head is used for scraping up the tethered skin from the nail surface.

PC PNSE624



C-CURVE PINCHER TOOL

■ Sturdier construction with a firmer grip

Specially designed X-cross nail enhancement pincher for creating and retaining the perfect C-curve.

PC PNSE629



NAIL ART TWEEZERS

■ Curved Nail Art tweezers

Pair of curved tweezers with pointed tips making it easier to pick up the smaller nail art bits.

PC PNSE627



DIAMOND DOTTING TOOL

■ Decor and dotting tool with diamond-studded handle

This tool has a spike and a precision dotting end for various types of nail art with color gels, color acrylics and acrylic paints.

PC PNSE632

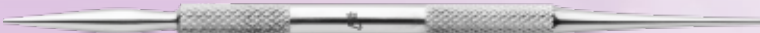


NAIL ART PEN

■ Nail art and dotting pen

Double-headed nail art pen with a pointy and a rounded head. Suitable for working on both natural nails and nail enhancements involving acrylic paint, color gels and acrylics.

PC PND10



SPATULA

■ Metallic mixing spatula

For stirring builder gels, mixing in glitter and acrylic powders, and positioning the AcrylGel on the nail.

PC PNSE626

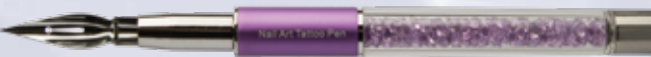


NAIL ART TATTOO PEN

■ Nail tattoo pen with replaceable nibs

Rigid and extremely pointy tip allows for drawing precise patterns and even text lines using properly thinned acrylic paint.

PC PNSE630



DRILL BITS

& sanding bits



For prepping

SMALL CONE DRILL BIT

■ Small carbide cone drill bit with lozenge-pattern teeth

With fine teeth, recommended specifically for precision jobs, the quick removal of the cuticle (upon pushing back) and cleaning.

PC PNG4056



PUSH UP DRILL BIT

■ Carbide bit for manicure

Recommended for lifting the pushed back cuticle and cleaning the nail plate. Also allows for the easy removal of the thickened skin at the nail folds. Also recommended for clients with sensitive skin.

PC PNG4073

FOR
CLIENTS WITH
SENSITIVE
SKIN

BESTSELLER



NARROW, CONICAL, DIAMOND-ENCUSTED DRILL BIT

■ Narrow, conical, diamond-encrusted drill bit for skin removal

This bit is ideal for cleaning up the cuticle areas that are hard to reach with a nail file. It removes the cuticle tethered to the nail plate and creates a matte nail surface. We recommend using this drill bit at a lower setting of your drill machine.

PC PNG4063

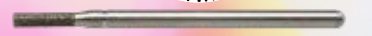


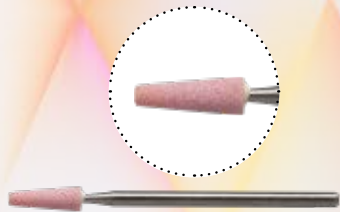
NARROW, CYLINDRICAL, DIAMOND-ENCUSTED DRILL BIT

■ Cylindrical, diamond-encrusted carbide bit

Recommended for removing tethered skin at the cuticle area.

PC PNG4064



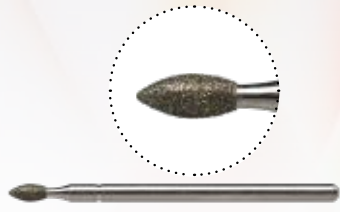


CONE-SHAPED, STONE-ENCRUSTED DRILL BIT

■ Cone-shaped stone-encrusted carbide drill bit

Suitable for pushing back the cuticle and gently cleaning the nail plate at the cuticle area.

PC PNG4065

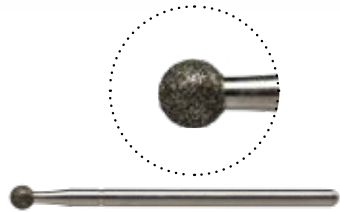


FLAME-SHAPED, DIAMOND-ENCRUSTED DRILL BIT

■ Oblong, cylindrical, diamond-encrusted carbide bit with a pointed end

Suitable for deep cleaning the pushed back cuticle.

PC PNG4066



BALL-SHAPED, DIAMOND-ENCRUSTED DRILL BIT

■ Ball-shaped, diamond-encrusted carbide bit

Suitable for buffing uneven skin edges and smoothing out the edges after the use of scissors.

PC PNG4067



RUSSIAN MANICURE DRILL BIT SET

■ Set of 5 different carbide bits

A set especially selected for a technique combining several different Russian Manicure techniques.

CONTENTS KIT PNG4068

PC Narrow, cylindrical, diamond-encrusted drill bit

PC Flame-shaped, diamond-encrusted drill bit

PC Ball-shaped, diamond-encrusted drill bit

PC Cone-shaped, stone-encrusted drill bit

PC Narrow, conical, diamond-encrusted drill bit



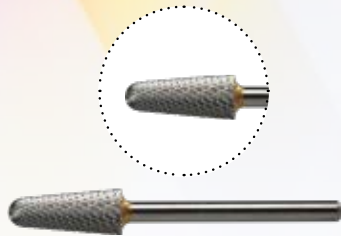
For surface refining

SILVER DRILL BIT

■ Medium rough, conical carbide drill bit

Suitable for refining and filing nail enhancements, and for infill. This bit is also suitable for pedicure: use it for dry or wet callus removal. Easy to sanitize.

PC PNG4054

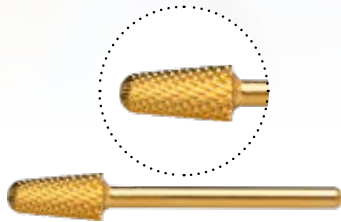


GOLD DRILL BIT

■ Medium rough, conical carbide drill bit

Suitable for refining and filing nail enhancements. This bit is also suitable for pedicure: use it for dry or wet callus removal. Easy to sanitize.

PC PNG4055

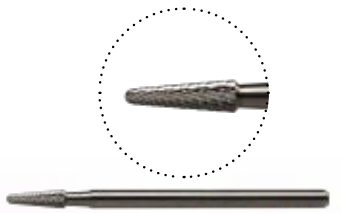


POINTY, CONE-SHAPED DRILL BIT

■ Pointy, cone-shaped carbide drill bit with lozenge-pattern teeth

Fine teeth specifically for precision manicure, for thinning the gel or acrylic layer by the cuticle and cleaning the free edge under the nail at the prepping phase.

PC PNG4062

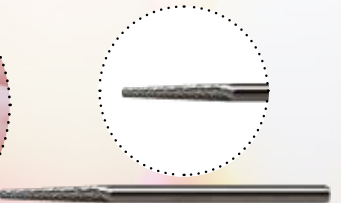


CARBIDE DRILL BIT WITH A LOZENGE PATTERN

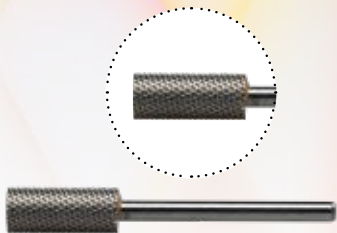
■ Cone-shaped carbide drill bit with a lozenge pattern for nail thinning

Perfect for the from-below cleaning of the free edge and nail thinning, filing out air bubbles as well as the filing of the smile line and cleaning the corners.

PC PNG4072



For removal and shortening

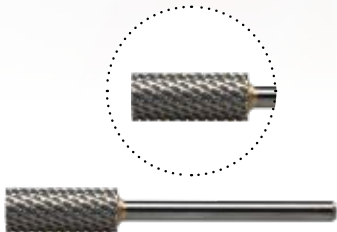


SILVER DRILL BIT

■ Medium strength carbide bit for gels

Specifically for removing and shortening gel nail enhancements. For pedicure; use it for dry or wet callus removal; perfectly sanitizable.

PC PNG4052

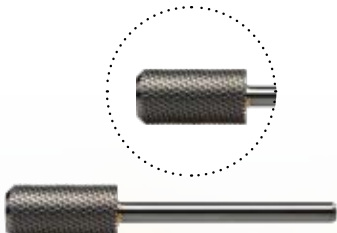


SILVER DRILL BIT

■ Rough carbide drill bit for acrylic techniques

Specifically for removing and shortening acrylic nail enhancements. For pedicure; use it for dry or wet callus removal; perfectly sanitizable.

PC PNG4053

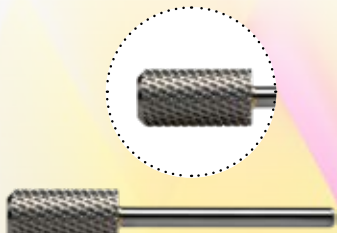


ROUNDED HEAD, CYLINDRICAL DRILL BIT

■ Medium strength, cylindrical carbide bit for gels

Wider bit with rounded edge specifically for removing and shortening gel nail enhancements and surface refining. Also suitable for removing foot calluses (requires a special pedicure machine). Perfectly sanitizable.

PC PNG4058



ROUNDED HEAD, CYLINDRICAL DRILL BIT

■ Rough, cylindrical carbide drill bit for acrylic techniques

Wider bit with rounded edge specifically for removing and shortening acrylic nail enhancements and surface refining. Also suitable for removing foot calluses (requires a special pedicure machine). Perfectly sanitizable.

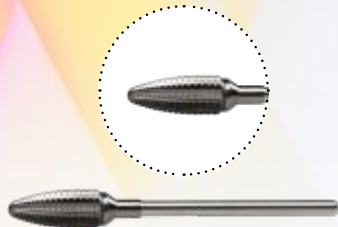
PC PNG4059

LARGE, LAMELLAR CARBIDE DRILL BIT

■ Large carbide drill bit with lamellar grit

The sharp lamellar grit is ideal for shortening, thinning and removing nail enhancements. Recommended for the quick removal of a large amount of material and buffing out the lifted parts. Also suitable for removing foot calluses (requires a special pedicure machine). Perfectly sanitizable.

PC PNG4060

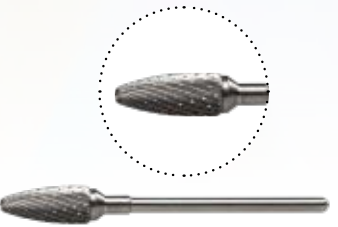


LARGE DRILL BIT WITH RHOMBOID GRIT

■ Large carbide drill bit with rhomboid grit

The sharp teeth are ideal for shortening, thinning and removing nail enhancements, buffing out the lifted parts and surface buffing. Also suitable for removing foot calluses (requires a special pedicure machine). Perfectly sanitizable.

PC PNG4061

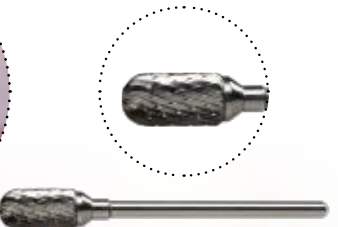


CYLINDRICAL DRILL BIT WITH RHOMBOID GRIT

■ Cylindrical carbide bit with rhomboid grit for gel polish technique

Ideal for removing gel polish and gel, shortening for filling and general refining or complete surface thinning and surface refining. The product is safe to use and won't harm the skin.

PC PNG4071

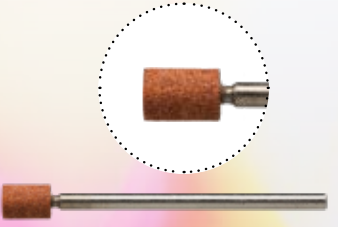


CYLINDRICAL DRILL BIT WITH RHOMBOID GRIT

■ Cylindrical carbide bit with rhomboid grit for gel polish technique

Ideal for removing gel polish and gel, shortening for filling and general refining or complete surface thinning and surface refining. The product is safe to use and won't harm the skin.

PC PNG4002



Sanding bands

■ Replaceable sanding bands

High quality sanding bands which will stay on the jack even at high rpm's. Various grain sizes to offer the right roughness sanding band for each phase.



BASIC SANDING BAND #80

Suitable for the shortening and/or removal of nail enhancements.

5 PCS / PACKAGE PNG4100

50 PCS / PACKAGE PNG4103



BASIC SANDING BAND #100

Suitable for the shortening and/or removal of nail enhancements.

5 PCS / PACKAGE PNG4101

50 PCS / PACKAGE PNG4104



BASIC SANDING BAND #120

Suitable for the shaping and refining of nail enhancements.

5 PCS / PACKAGE PNG4102



PREMIUM SANDING BAND #80

Suitable for the shortening and/or removal of nail enhancements.

5 PCS / PACKAGE PNG4109

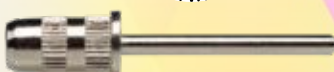
50 PCS / PACKAGE PNG4113



SANDING BAND MANDREL

■ Stainless steel mandrel for sanding bands.

PC PNG4110



“
My best drill machine ever.
Durable, does not vibrate,
I can work with it nicely.
- Fanni
”

PERFECT DRILL

Premium quality drill machine



Nail Drills

PERFECT DRILL MACHINE

■ Professional drill machine with micromotor

Premium quality drill machine manufactured by a dental instrument manufacturer, featuring a professional handpiece equipped with a super silent micromotor. The machine has a holder for the handpiece and a flexible cable. A powerful, advanced micromotor provides seamless change of rotational speeds between 0 and 30 000 rpm for the handpiece, which does not wobble, and is particularly gentle on the nail surface. The direction of the rotation can be switched, and the operation is vibration-free. The advanced chuck of the handpiece makes the changing of drill bits quick and easy, saving you precious time during salon work. Recommended for beginner and advanced nail techs for manicure techniques and nail enhancements.

PC PNG3040



SILICONE DUST CAP

■ Protects the handpiece of the nail drill machine against dust

Use our silicone dust caps to prevent dust from entering the handpiece of the drill during the filing process. As such, the chuck of the handpiece is protected, extending the lifecycle of the handpiece.

3 PCS / PACKAGE PNSE648



PERFECT DRILL PEDAL

■ Use with the Perfect Drill machine

This accessory allows the Perfect Drill machine to be operated by foot.

PC PNG3041





BASIC DRILL MACHINE

■ Semi-professional drill machine with micromotor

A compact, streamlined, semi-professional drill machine that has a holder for the handpiece and a flexible cable. A strong, advanced micromotor provides seamless change of rotational speeds between 0 and 20 000 rpm for the handpiece, which does not wobble, and is particularly gentle on the nail surface. The direction of the rotation can be switched, and the operation is vibration-free. The advanced chuck of the handpiece makes the changing of drill bits quick and easy, saving you precious time during salon work. Recommended for trainees and advanced nail techs for nail extensions and manicure techniques. The compact size makes this machine an ideal choice as a first or on-the-go nail drill.

PC PNG3043

PROXXON MICROMOT 50

■ Multifunctional drill machine without adapter



This 20cm long, 40W drill features a fiberglass polyamide casing with bearings. It has an integrated microswitch in the handle, a 6-piece collet set, and enables the use of chucks between 1 and 3.2mm in diameter. The advanced chuck of the handpiece makes the changing of drill bits quick and easy, saving you precious time during salon work. The rotations per minute are adjustable on the adapter (max. 20 000 rpm). A network adapter is not included with the machine, but it is necessary for the nail drill's operation.

PC PNG3002

PROXXON NETWORK ADAPTER

■ Adapter for the Proxxon Micromot 50 drill machine



This network adapter is needed for the operation of a Proxxon Micromot 50 nail drill. The adapter enables the adjustment of the nail drill's output.

PC PNG3000

UV/LED lamps

MOONLIGHT PLUS UNIVERSAL UV/LED LAMP

■ 48W UV/LED lamp with white light

This lamp features a dual light source and 36, well-arranged UV/LED lights (365nm + 405nm), providing an ultra quick cure time for products. The lamp's 48W output is much higher than the output of traditional 4-tube lamps. The white light of this lamp is eye-friendly and it illuminates the whole area, enabling consistent curing. The lamp has a half-down ("low" heat / reduced speed) mode to protect the nailbed from a burning feeling induced by the sudden heat. This model is equipped with timer buttons (10–30–60–99 sec), a digital display, an infrared and smart sensor and timer memory. When used without the timer function, the on/off switching is sensor-controlled (120 sec). Another benefit of the device is the external power plug / adapter that protects against electric shocks. The lamp has a detachable base, so this model is also ideal for pedicure.

WIDTH: 23.7cm | **HEIGHT:** 20.8cm | **DEPTH:** 11.4cm

PC PNG1031



SMART UNIVERSAL UV/LED LAMP

■ 48W UV/LED lamp without a base

This lamp features a dual light source and 21, well-arranged UV/LED lights, providing an ultra quick cure time for products. The lamp's 48W output is much higher than the output of traditional 4-tube lamps. The lamp has a half-down ("low" heat / reduced speed) mode to protect the nailbed from a burning feeling induced by the sudden heat. This model is equipped with timer buttons (30–60–99 sec), a digital display, an infrared and smart sensor and timer memory. Having no base, this lamp is also ideal for pedicure.

WIDTH: 23cm | **HEIGHT:** 14.3cm | **DEPTH:** 9cm

PC PNG1034





UNICORN UV/LED LAMP

■ 48W UV/LED lamp with holographic design

Universal 48W UV/LED lamp with a holographic finish. The lamp features 30 energy-saving LEDs, and their sensors are placed lower in order to enable perfect curing on the thumb as well. The lamp has a half-down ("low" heat/ reduced speed) mode to protect the nailbed from a burning feeling induced by the sudden heat. This model is equipped with timer buttons (30–60–99 sec) and a smart sensor. The magnetized base of the lamp has a mirror surface and it is detachable.

WIDTH: 18.5cm | **HEIGHT:** 8cm | **DEPTH:** 15cm

PINK	PC	PNG1036
SILVER	PC	PNG1037



MASTER TABLE LED LAMP

■ Desktop lamp with 98 LEDs

Elongated, 15W desktop LED lamp with a fastening apparatus that safely locks the lamp in place. The lamp has a flexible head allowing 360-degree-adjustments to achieve the perfect angle for your lighting. There are 98 energy-saving LEDs, providing perfectly bright and white, consistent lighting for your workstation. The lamp features a dimmer function, allowing selection between four brightness levels. This lighting does not produce vibrations on photos and videos.

WIDTH: 50cm | **HEIGHT:** 82cm

PC PNG1035



X UV/LED LAMP

■ 90W UV/LED lamp with multi-color LED band

Apart from an outstanding 90W output, the lamp has a multi-color LED band, as well as an integrated fan to avoid overheating. It has a dual light source and 45, well-arranged UV/LED lights, making sure that even the most challenging materials are perfectly cured. The lamp has a half-down ("low" heat / reduced speed) mode to protect the nailbed from a burning feeling induced by the sudden heat. This model is equipped with timer buttons (30–60–99 sec), a digital display, an infrared and smart sensor and timer memory. It has an extra long electronic cable. The lamp has a detachable mirror base, so this model is also ideal for pedicure.

WIDTH: 23.6cm | **HEIGHT:** 19.5cm | **DEPTH:** 11.5cm

PC PNG1039



STAMPING

accessories



STAMPING NAIL POLISH

■ Nail polish for stamping

High-pigmentation nail polish colors designed for stamping. The extra pigmentation ensures that even the most intricate designs and the finest lines can all be seen on the end result. This nail polish is a bit thicker than regular nail polish to allow adequate drying time for stamping. It dries extremely quickly after application from the stamper. The stamping polish should be used on a cured, cleansed, and then buffed surface. A flexible top gel or top coat is needed as a finishing touch.

PERFECT TIP: Before application, make sure to shake the nail polish bottle to release pigments from the bottom.

DRY TIME: 1–2 minutes

7 ML PNDNY014-016 | PNDNY020-022 | PNDNY036-037



NAILS:
Évi Darabos



STAMPING SCRAPER

■ Plastic card for stamping

Extra slim, bendable, white plastic card that leaves an ideal amount of nail polish in the nooks and crannies of the stamping plates. Easy to clean.

PC PNDNY013





NEW

STAMPING & PAINTING GEL 2 IN 1

■ No-cleanse gel for nail art

This no-cleanse, slightly flexible, high-pigmentation nail art gel provides complete coverage even if applied in a thin layer, making it an ideal choice for stamping, gel painting and the One Move technique. The gel-like consistency and the extra pigmentation ensure the visibility of the finest, most delicate lines on the end result. The stamping gel should be used on a no-cleanse, cured surface. The product cures to shiny, so there is no need for a finishing top gel.

WARNING! When used on a matte surface, a top gel is necessary as a finishing touch.

CURE TIME: UV 2 min., UV/LED 60 sec.

8 ML PNDNY017-019 | PNDNY023-027

8 ML PNDNY030-034 | PNDNY046-054

THICKNESS	● ● ● ● ● ● ● ●
FLEXIBILITY	● ●
SOLUBILITY	●



TIPS:
Évi Darabos

STAMPING PLATE

■ Stamping plate made of metal with various patterns

NEW

Each 6 x 12cm plate features a specific theme and has 12 different patterns that are all 100% usable. The stamping plates are ideal for stamping on the entire surface of the nail or for partial designs. They come in a colorful paper sleeve for practical storing.

PERFECT TIP: Remove the protective foil before use, and thoroughly clean the plate's surface with acetone.



LOVE
STAMPING PLATE

PNDNY001



XMAS
STAMPING PLATE

PNDNY004



FLOWERS
STAMPING PLATE

PNDNY007



STRIPS
STAMPING PLATE

PNDNY010



ROCOCO
STAMPING PLATE

PNDNY002



HALLOWEEN
STAMPING PLATE

PNDNY005



SUMMER
STAMPING PLATE

PNDNY008



LEFT & RIGHT
STAMPING PLATE

PNDNY040



CHRISTMAS
STAMPING PLATE

PNDNY003



AZTEC
STAMPING PLATE

PNDNY006



HYPNOTIQUE
STAMPING PLATE

PNDNY009



WEDDING
STAMPING PLATE

PNDNY042



STAMPER - FROSTED CLEAR

■ Transparent stamper with a magnifying glass

Recommended for larger surfaces, though the integrated magnifying glass also helps with the positioning of smaller designs. The stamper is transparent, so you can place your design as accurately as possible. There is a see-through cap to protect the stamper when it is not in use.

PERFECT TIP: Gently clean the stamper with acetone-free nail polish remover before and after each use.

PC PNDNY012



STAMPER - CLEAR

■ Transparent stamper

Recommended for smaller surfaces and smaller designs. The stamper is transparent, so you can place your design as accurately as possible. There is a see-through cap to protect the stamper when it is not in use.

PERFECT TIP: Gently clean the stamper with acetone-free nail polish remover before and after each use.

PC PNDNY011



TIPS:
Évi Darabos



See you at Cosmoprof Worldwide
Bologna: 10–14 March, 2022



Glitter powders

■ Finely milled glitter dust for surface and encapsulated designs

These powders can be sprinkled onto top gel or color gel for sugaring designs, or encapsulated using builder gels, acrylics, Liquid Stone Gel and Glue Gel. They are also ideal for a French edge.



PIXIE POWDER

■ Colorful glitter powders

MULTI WHITE PIXIE POWDER



PNPP13

OCEAN BLUE PIXIE POWDER



PNPP17

SKY PIXIE POWDER



PNPP18

PURPLE WHITE PIXIE POWDER



PNPP19

RASPBERRY PIXIE POWDER



PNPP20

WHITE PIXIE POWDER

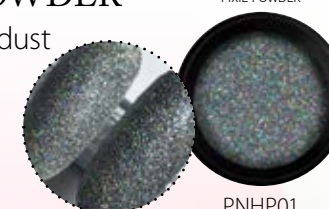


PNPP21

HOLO PIXIE POWDER

■ Holographic glitter dust

HOLO PIXIE POWDER



PNHP01

SNOW GRAINS

■ White glitter dust

SNOW GRAINS GLITTER DUST



PNP0097

HOW TO USE

Sprinkle onto an uncured layer of color gel (e.g. Delux Gel) or no-cleanse top gel (e.g. No Cleanse Top Shield), cure the nail, then gently remove the excess powder with a dusting brush.

PERFECT TIP: These powders can be mixed into the builder gel or acrylic powder before creating the nail enhancement for an encapsulated design.

Chrome Powders

■ Extra finely milled, pixel-free chrome powders for surface nail art

These powders can be rubbed onto nail enhancements and gel polish, and they can also be used in combination with stamping.

PASTEL ORANGE
VEIL CHROME POWDER

PASTEL YELLOW
VEIL CHROME POWDER

PASTEL CORAL
VEIL CHROME POWDER

PASTEL GREEN
VEIL CHROME POWDER

PASTEL MAUVE
VEIL CHROME POWDER

PASTEL BLUE
VEIL CHROME POWDER

PNP0100

PNP0101

PNP0102

PNP0103

PNP0104

PNP0105

SCARABEUS CHROME POWDER

■ Iridescent, color-shifting chrome powder

NEW

PURPLE
SCARABEUS CHROME POWDER

PINK
SCARABEUS CHROME POWDER

PNP0093

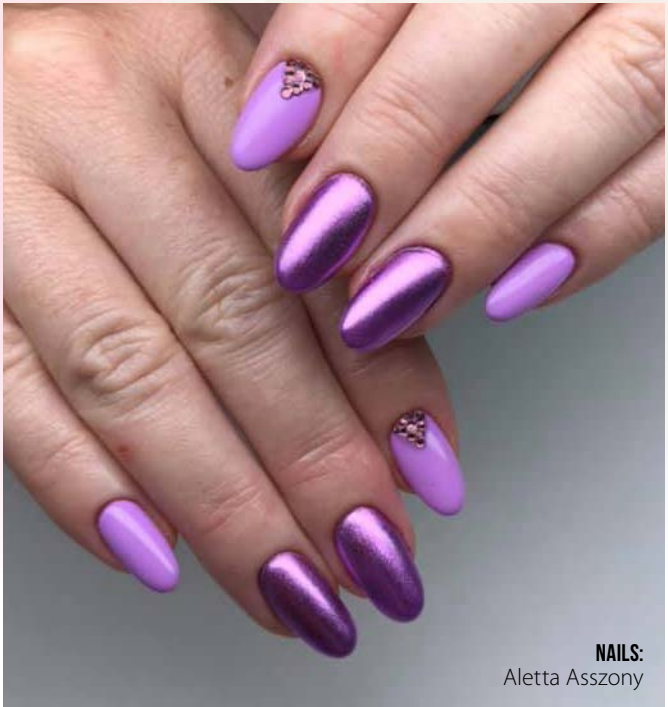
PNP0094

VEIL CHROME POWDER

■ Chrome powder with a slightly translucent, veil-like effect



NEW



CHROME POWDER

■ Iridescent chrome powders

ROSE GOLD
CHROME POWDER

PURPLE
CHROME POWDER

MAGENTA
CHROME POWDER

BLUE
CHROME POWDER

TURQUOISE
CHROME POWDER

SILVER
CHROME POWDER

GOLD
CHROME POWDER

PNP0088

PNP0089

PNP0090

PNP0091

PNP0092

PNP0098

PNP0099



HOW TO USE

Rub onto the surface of halfway cured no-cleanse top gel with an ombre sponge, then apply two layers of flexible top gel (e.g. Cool Shine Ever Gel). If used with stamping, gently press the powder into the halfway dried stamping polish or the halfway cured stamping gel, then apply a flexible top gel to seal your design.

PERFECT TIP: Sirene's Secret Holo Nail stickers are an ideal choice for masking to create quick and easy designs.



NEW

UNICORN CHROME POWDER

■ Translucent chrome powders with a silky shine



HOLO LASER POWDER

■ Semi-translucent chrome powder with a holographic effect



AURORA POWDER

■ Color-shifting chrome powder with Northern Lights effect



HOW TO USE

Rub onto the surface of halfway cured no-cleanse top gel with an ombre sponge, then apply two layers of flexible top gel (e.g. Cool Shine Ever Gel). If used with stamping, gently press the powder into the halfway dried stamping polish or the halfway cured stamping gel, then apply a flexible top gel to seal your design.
PERFECT TIP: Sirene's Secret Holo Nail stickers are an ideal choice for masking to create quick and easy designs.

Mermaid powders

■ Finely milled, iridescent effect powders for surface nail art

Gently dab onto the surface of halfway cured gel polish or top gel that requires cleansing, then apply a thicker layer of flexible top gel.

PERFECT TIP: These powders can be sprinkled onto top gel or color gel for sugaring designs.

MERMAID POWDER

■ Iridescent mermaid powder

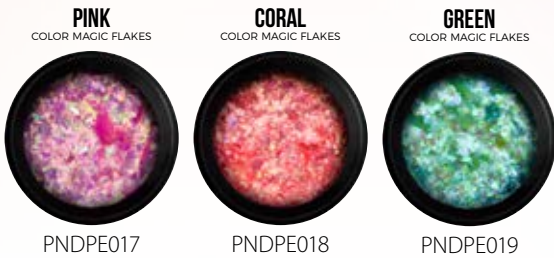
NEW



Nail Art flakes

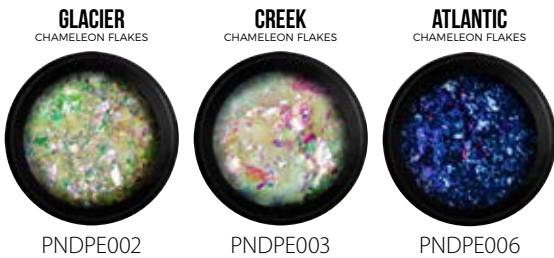
■ Ultra thin, glittery nail art flakes for surface and encapsulated designs

These flakes can be gently rubbed onto nail enhancements and gel polish, or encapsulated using builder gels, acrylics, Liquid Stone Gel, Glue Gel. They are also ideal for a French edge.



COLOR MAGIC FLAKES

■ Semi-transparent, iridescent flakes in various colors



CHAMELEON FLAKES

■ Multi-chrome, iridescent flakes



NAILS:
Évi Darabos



NAILS:
Noémi Hargitai

METAL CHROME FLAKES

■ Shiny, chrome-effect flakes



HOW TO USE

Rub onto the surface of cured no-cleanse top gel with an ombre sponge, then apply two layers of flexible top gel (e.g. Speed & Shine Top Gel).

PERFECT TIP: When creating an encapsulated design, clear-capping can be done with builder gel, acrylic or a thicker coat of flexible top gel.

Pigment powders

■ Extra finely milled pigment powders for surface and encapsulated designs

These powders can be gently dabbed onto nail enhancements and gel polish, or encapsulated using builder gels, acrylics, Liquid Stone Gel, Glue Gel. They are also ideal for a French edge, and can also be used in combination with stamping.

BOURDON / NEON ROSE
THERMO POWDER



PNP0066

PURPLE / NEON PINK
THERMO POWDER



PNP0068

NEON PURPLE / BLUE
THERMO POWDER



PNP0077

RED / NEON PEACH
THERMO POWDER



PNP0078

BRICK / NEON ORANGE
THERMO POWDER



PNP0067

GREEN / NEON YELLOW
THERMO POWDER



PNP0065

BROWN
MICA SILK POWDER



PNDMI09

TAN
MICA SILK POWDER



PNDMI10

RED-GOLD
MICA SILK POWDER



PNDMI11

RED
MICA SILK POWDER



PNDMI16

THERMO POWDERS

■ Pigment powders shifting color with the temperature

Pigment powders of vivid, neon-like tones in warm air and deep, dark tones in the cold. Suitable for the smoke technique, creating gradients and complete coverage.



NAILS:
Évi Darabos

MICA SILK POWDERS

■ Pigment powders with a slight pearly sheen

HOW TO USE

Rub onto the surface of halfway cured gel polish or no-cleanse top gel with an ombre sponge, then apply a thicker layer of flexible top gel. If used with stamping, gently press the powder into the halfway dried stamping polish or the halfway cured stamping gel, then apply a flexible top gel to seal your design.

PERFECT TIP: When creating an encapsulated design, clear-capping can be done with builder gel, acrylic or a thicker coat of flexible top gel (e.g. Extreme Gloss Gel).

Acrylic paints

■ Air-drying acrylic paints for surface nail art. The paints become waterproof after drying

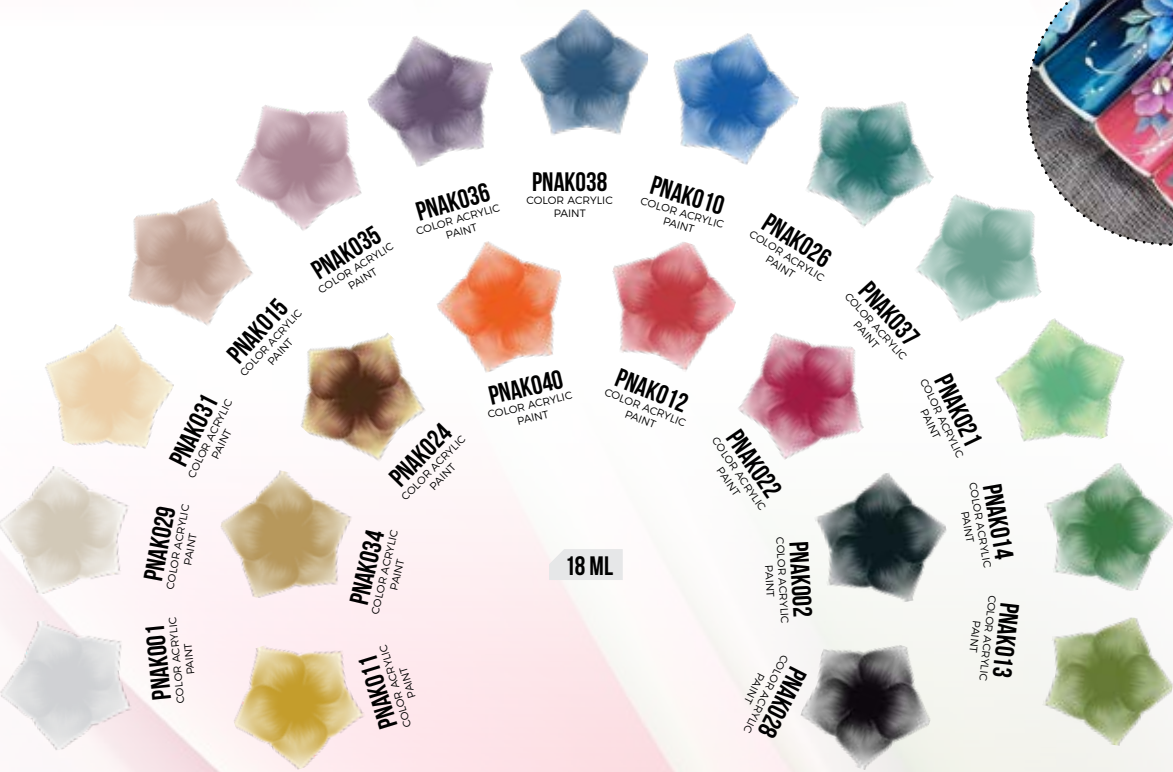
Color Acrylic Paint

■ Highly pigmented, colored, air-drying acrylic paints

A highly pigmented, thick and creamy acrylic paint specifically for the one move technique; waterproof when dry. Also suitable for traditional acrylic techniques (e.g. contouring and shading). Requires no thinning.

18 ML PNAK001-022

18 ML PNAK023-042



Nail Art bits and pieces

■ Mid-sized, irregular shaped nail art pieces for encapsulated designs

These pieces can be encapsulated using builder gels, acrylics, Liquid Stone Gel or Glue Gel. Clear-capping can be done with builder gel, acrylic or a thicker coat of flexible top gel (e.g. Nail Art Top Gel).

WHITE
NEON FLAKES



PNDMA01

PINK
NEON FLAKES



PNDMA03

VIOLET
NEON FLAKES



PNDMA04

BLUE
NEON FLAKES



PNDMA05

ORANGE
NEON FLAKES



PNDMA02

GREEN
NEON FLAKES



PNDMA06

NEON FLAKES

■ Neon-colored, synthetic pieces with a matte finish



LIGHT BLUE
PERFECT OPAL



PNDO004

ORANGE
PERFECT OPAL



PNDO005

RED
PERFECT OPAL



PNDO009

DARK BLUE
PERFECT OPAL



PNDO010

PERFECT OPAL

■ Real opal bits with natural multi-chrome iridescence



WONDER FLAKES

Nail art flakes with a color-shifting metallic effect

NEW

SILVER
WONDER FLAKES




PNDPE021

BLACK
WONDER FLAKES




PNDPE022

PINK
WONDER FLAKES




PNDPE023

ROSE GOLD
WONDER FLAKES



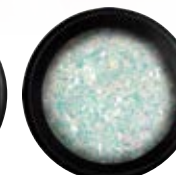
PNDPE024

BLUE
WONDER FLAKES



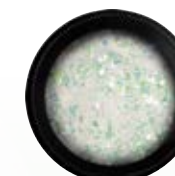
PNDPE025

WHITE
WONDER FLAKES



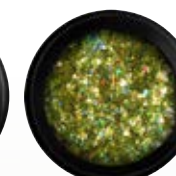
PNDPE026

WHITE-PINK
WONDER FLAKES




PNDPE027

GREEN
WONDER FLAKES




PNDPE028

PURPLE
WONDER FLAKES



PNDPE029

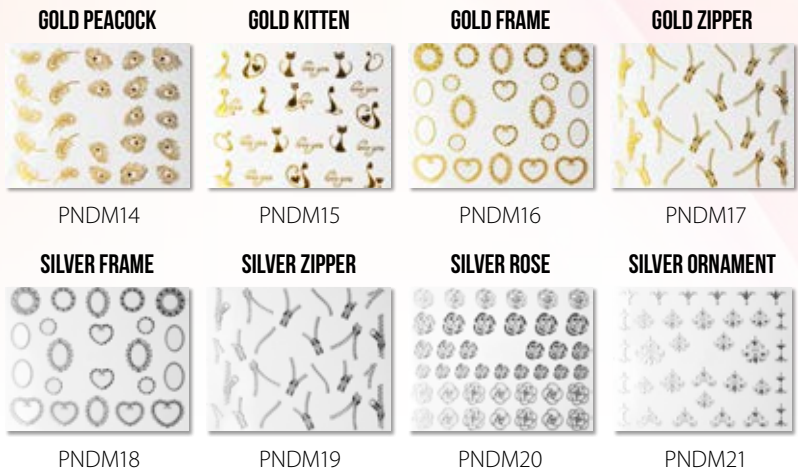
GOLD
WONDER FLAKES



PNDPE030

Self-adhesive Nail Art stickers

■ Ideal for surface designs



METAL NAIL STICKERS

■ Self-adhesive stickers with a metallic finish



BROKEN GLASS NAIL STICKERS

■ Iridescent, multi-chrome self-adhesive stickers with broken glass effect



HOW TO USE

Cut the selected shape to size, then stick the adhesive side onto a buffed, dusted and dry surface. Apply a thicker coat of flexible top gel (e.g. Extreme Gloss Gel).

HOLO NAIL STICKERS

■ Self-adhesive stickers with a metallic finish to cover the whole nail

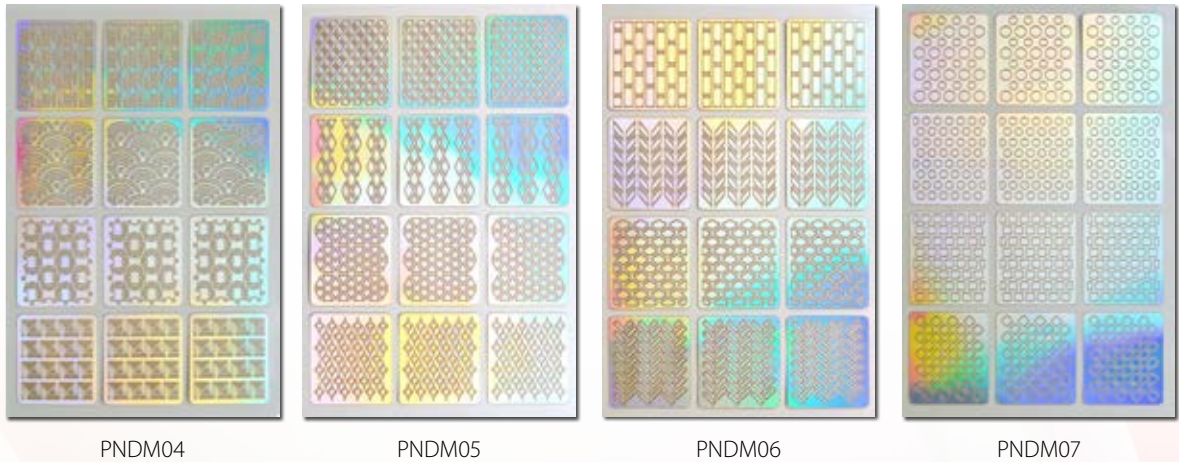
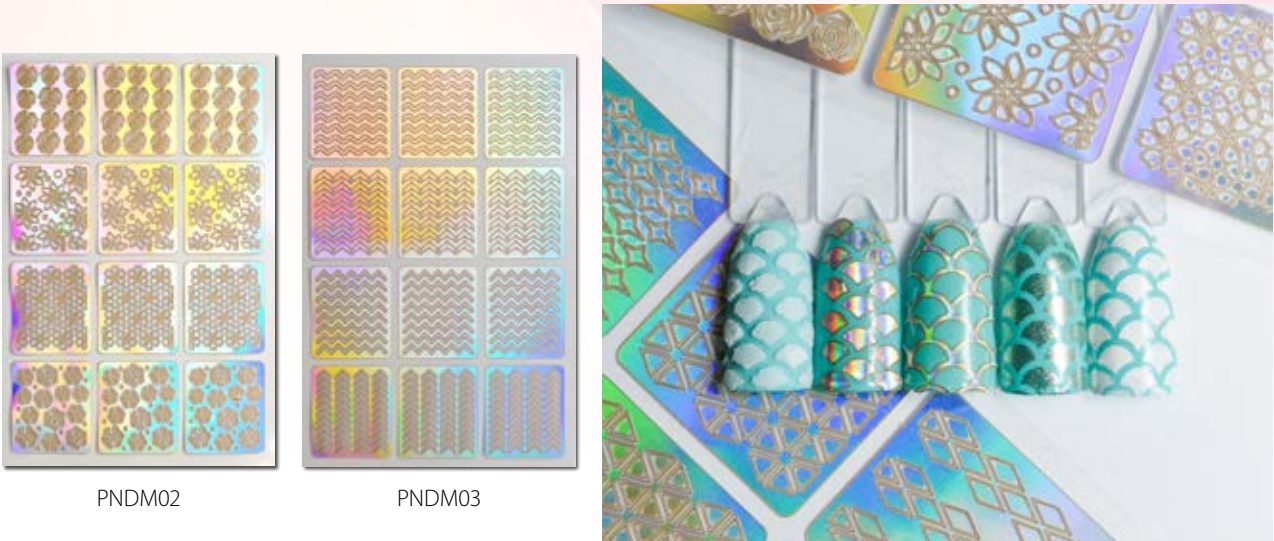


HOW TO USE

Cut the selected shape to size, then stick the adhesive side onto a buffed, dusted and dry surface. Using vertical movements, gently remove the excess with a fine grit nail file (Premium #180). Apply two coats of flexible top gel (e.g. Extreme Gloss Gel).

SIRENES' SECRET HOLO NAIL STICKERS

■ Self-adhesive stickers ideal for masking



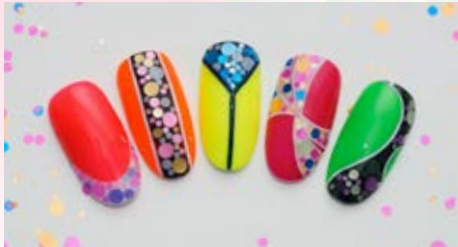
HOW TO USE

Stick the self-adhesive side onto a layer of cured no-cleanse top gel (e.g. Cool Shine Ever Gel) so that we see the negative of the chosen pattern, then take an ombre sponge and rub chrome powder onto the area. Remove the masking sticker, and seal your design with two layers of flexible top gel (e.g. Cool Shine Ever Gel).

Nail Art flitters

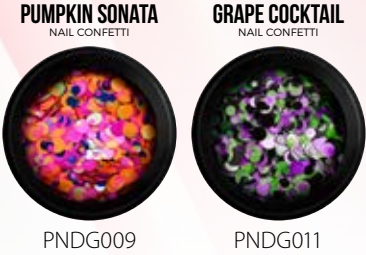
■ Various shapes of flat flitters for encapsulated designs

These flakes can be encapsulated using builder gels, acrylics, Liquid Stone Gel or Glue Gel. Apply a generous layer of thicker consistency top gel (e.g. Nail Art Top Gel).



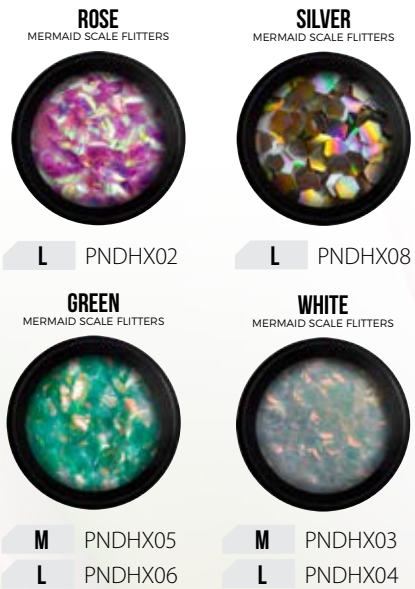
NAIL CONFETTI

■ Round shaped flat confetti in various sizes and colors with a matte and pearly finish



MERMAID SCALE FLITTERS

■ Fish scale shaped, semi-transparent, iridescent flitters in various colors



Water decals Nail Art stickers

■ Ideal for surface designs

ABSTRACT FACE & LEAF



PNDM62

ABSTRACT ART



PNDM63

LIPS & MORE



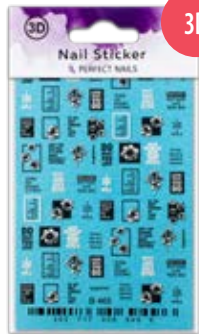
PNDM64

SCRIPT



PNDM65

QUOTES



PNDM66

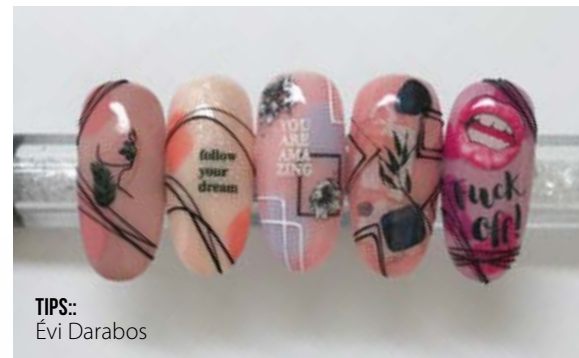
NAIL STICKERS

NEW

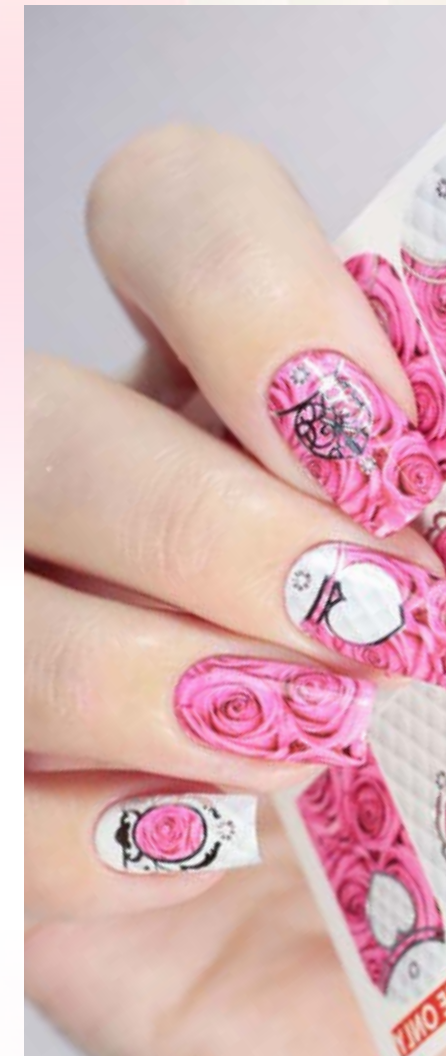
■ Water decals with various modern patterns



TIPS::
Abigél Krupa



TIPS::
Évi Darabos



NAIL DRESS STICKERS

■ Water decals with various patterns to cover the whole nail

AUDREY



PNDM33

ROSES



PNDM25

COLORFUL



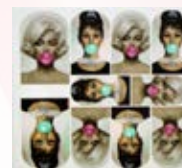
PNDM26

BLACK LACE



PNDM27

MARILYN



PNDM28

RIBBON



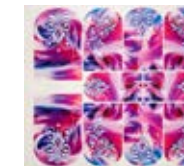
PNDM29

ROSE BOUQUET



PNDM30

SHADOWS



PNDM31

POPPY



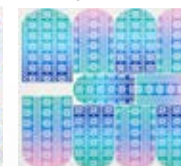
PNDM32

SCANDINAVIAN



PNDM34

SWEATER



PNDM35

CHRISTMAS TREE



PNDM36

CRASHED ICE



PNDM37

HOW TO USE

Cut the chosen decal shape to size, and immerse it in water for 5 seconds. Take the decal out of the water, and remove the excess water by gently patting the surface of the decal with a dry paper towel. Then carefully remove the backing paper from the decal. Make sure to have a buffed, dry and dusted-off nail surface before you apply and gently smooth out the decal on it. Using vertical movements, gently remove the excess with a fine grit nail file (Premium #180) if needed. Apply a thicker coat of flexible top gel (e.g. Extreme Gloss Gel) as a finishing touch.

HOW TO USE

Remove the protective film from the chosen decal, cut the shape to size, and immerse it in water for 5 seconds. Take the decal out of the water, and remove the excess water by gently patting the surface of the decal with a dry paper towel. Then carefully remove the backing paper from the decal. Make sure to have a buffed, dry and dusted-off nail surface before you apply and gently smooth out the decal on it. Using vertical movements, gently remove the excess with a fine grit nail file (Premium #180) if needed. If a thicker layer of sticker has been applied to the whole nail surface, seal your design with two generous layers of flexible top gel (e.g. Extreme Gloss Gel).

PERFECT TIP: Wrinkles and creases may be fused together by applying a drop of Perfect Bond Primer.

Rhinestones for Nail Art

■ Ideal for surface designs

MERMAID PEARLS

■ A mix of flatback pearls in various sizes and colors



TREASURE ISLAND

■ Mix of rhinestones and beads of various sizes and shapes

3D HOLO DROPS

■ Water drop-shaped holographic nail art stones with 3D effect



AQUA COCKTAIL DROPS

■ Silver and blue rhinestones with water drop effect



NAILSTAR STRASS

■ Premium quality rhinestones in various sizes and colors



MICRO PEARLS XS

■ Size XS metallic beads for jewel effect designs



HOW TO USE

Apply a small amount of Glue Gel on the nail, then position the chosen pearl/rhinestone so that the Glue Gel surrounds it on all sides. Cure for 5-10 seconds. Finish your design by applying a flexible top gel onto the nail (e.g. Cool Shine Ever Gel or Velvet Matt Extra Gel). Do not apply the top gel onto the surface of the pearl/rhinestone itself.

Nail Art foils

■ Ideal for encapsulated designs



MIRROR FOIL

■ Translucent, thin foil with a colored glass effect



HOW TO USE

Cut out the desired shape from the foil roll, then adhere it using builder gel, acrylic, Liquid Stone Gel or Glue Gel. Clear-capping can be done with builder gel, acrylic or a thicker coat of flexible top gel (e.g. Nail Art Top Gel).

Transfer foils

■ Ideal for surface designs



TRANSFER FOIL KIT

■ Nail art foil for a patchwork effect

RAINBOW	PC	PNTR026
METALLIC MANIA	PC	PNTR025



HOW TO USE

Take scissors and cut out the desired shape from the foil roll. Apply Transferfoil Gel onto the nail in the desired shape, and cure it for min. 30 seconds. After curing, firmly press the foil piece onto the sticky surface, then quickly pull away. If you need to add more foil to the surface, repeat this step. Clear-capping can be done with builder gel or a thicker coat of flexible top gel (e.g. Extreme Gloss Gel).

PERFECT TIP: Try these with a matte top gel (e.g. Vevet Matt Extra Gel).

SNEEZE GUARD

■ Sneeze guard made of clear acrylic

The 2mm thick, 595 x 790mm sneeze guard made of acrylic protects you against airborne droplets (caused by sneezing, coughing) at your workstation. The plexiglass shield has double-sided adhesive tape on its feet, so it can easily be attached to your desktop.

WARNING! Both sides have a protective foil layer that needs to be removed before use.

WIDTH: 595mm | **HEIGHT:** 790mm

SIZE OF THE OPENING: 300 x 200mm

PC PNSE713



HAND CLEANER GEL

■ Clear gel with alcohol and glycerin for cleaning hands

Alcohol-based hand cleaner gel for maintaining adequate hand hygiene. It contains glycerin that not only cares for the skin but also acts as an antibacterial agent. This gel air-dries and there is no need to rinse off any residue with water. The glycerin content of this special hand cleaner protects the skin from drying out. Also recommended for sensitive skin.

100 ML PNKTG001





DISPOSABLE FACE MASK

- Latex-free, disposable face mask

Protects against dust during the filing steps, and helps to avoid breathing in chemicals that might irritate the airways. The mask has an adjustable nose wire, a non-woven inner fabric layer and elastic ear loops for extra comfort.

10 PCS / PACKAGE PNV0104

50 PCS / PACKAGE PNV0107

NEW



REUSABLE FACE MASK

- Reusable and washable neoprene face mask with air chamber

The mask is elastic, so it fits any face shape perfectly. It features central stitching that allows for a comfortable air chamber between the nose and the mouth area. This prevents the mask from sticking to your lips, and eases your breathing and articulation. The nose bridge wire of the mask is padded to avoid chafing. Since the material is breathable, this mask gives noticeably more comfort for your skin. This unisex design is equally recommended for ladies and gentlemen.

PC PNV0106

NEW



NITRILE GLOVES

- Latex- and powder-free, disposable gloves

These gloves are elastic, flexible and thin enough to allow you to work comfortably. Compared to latex gloves, these are stronger, more durable and they do not tear easily. These gloves are resistant to chemicals and substances. The fingertips are micro textured, and this slightly coarse surface allows you to have a secure grip. Although the gloves are powder-free, they are designed to be put on and taken off easily. There is an added comfort in comparison with latex gloves: during wear, your hands will not get as sweaty. Also recommended for sensitive skin. All gloves are universal, so they are equally suitable for the left and the right hand.

S **100 PCS / BOX** PNV029

M **100 PCS / BOX** PNV028

L **100 PCS / BOX** PNV027

RUBBERIZED TEXTILE GLOVES

- Textile gloves with rubber-coated fingertips

Tightly knit textile gloves in white. The stretchy wrist part comes in different colors and the fingertips have a polyurethane coating to allow a secure grip. The special textile fabric allows the skin to breathe, so it is much more comfortable to wear than regular rubber gloves.

S **PC** PNV035

M **PC** PNV036



NEW

PROTECTIVE BANDAGE

- Self-adhesive, protective bandage

This bandage protects your fingers from cuts and abrasion caused by tools used during salon work.

PINK **PC** PNV033

BROWN **PC** PNV034



NAIL PADS

- Lint-free nail pads made of fabric

Absolutely lint-free, strong, durable and tear-free nail pads – perfect for removing the sticky residue from nails and cleaning your brushes. They efficiently remove dust particles and leave no lint behind.

400 PCS / PACKAGE PNSE304



SEE
NAIL PADS
HOLDER ON
PAGE 165.

NAIL WIPES

- Lint-free, perforated nail wipes made of paper

Lint-free, perforated, extra absorbent nail wipes made of paper – suitable for removing the sticky residue from nails and removing nail polish.

PREMIUM **100 PCS** PNSE301

BASIC **500 PCS** PNSE302

500 PCS PNSE303





SILICONE MAT

■ Silicone mat for your workstation

This durable, water repellent and non-matting product is suitable for replacing regular and paper towels during salon work. Easy to clean and sanitize. You can put paints and colored gels directly onto the mat.

WASHABLE,
SANITIZABLE

PURPLE

PC PNSE639

CLEAR

PC PNSE640



SILICONE NAIL ART PAD

■ Transparent, mini silicone pad

Excellent table surface protector to put under gel jars. This transparent pad is perfect for mixing colors, while the softness of the silicone will prevent decor stones from bouncing off. It's easy to clean, durable and water repellent.

2 PCS / PACKAGE PNSE691



ARM AND ELBOW REST

■ Multifunctional arm rest made of plastic

This durable hand rest provides comfortable support for the hand. The non-slip and water repellent surface makes it easy to clean and sanitize.

PC PNSE641



HAND REST - SOFT

■ Hand rest made of memory foam with a terrycloth cover

This hand rest provides stable support for the hand. The cover is removable and machine-washable.

PC PNB0018



MEMORY
FOAM

COVER IS
MACHINE-
WASHABLE



DUST MAGNET BRUSH

- Double-sided dust removal brush with dust magnet effect

Special double-sided dust removal brush with dust magnet effect. The unique design and bristles help remove all the dust particles trapped on the nail bed. It contains roughly 3,000 silicone bristles which attract the dust particles like a magnet. For dry and wet use. Easy to clean and sanitize.

PC PNSE649



UNICORN BRUSH

- Dusting brush with a unicorn shaped handle

The extra soft and densely packed bristles of this brush help you to completely remove dust particles from the nail after filing. This brush is gentle on the skin to make this dust-off phase a more pleasant experience for your clients. It is perfectly suitable for a Russian manicure to dust off sensitive skin and the area around the side walls.

GOLD

PC PNSE709

PINK

PC PNSE710



CAT EYE LACGEL MAGNET – GREY

- Double-sided magnet for magnetizable gel polish

The grains in Cat Eye LacGels react to the magnet placed over the nail, revealing a lighter color design on the nail. One side is suitable for creating straight lines, the other is for creating arched and wavy lines.

PC PNSE703



PRACTICE FINGER

A great tool for nail tech students and beginners to practice nail form application and sculpting. We do not recommend the application of tips onto the practice finger.

PC PNSE550

CUTICLE PUSHER & SCRAPER 2 IN 1 – EASY

- Plastic pusher/scraper tool with a rubber covered pusher edge

Suitable for prep work before nail polish or gel polish application. Gently push back the cuticle with the rubbery edge, then use the flattened scraper end to clean the nail plate.

PC PNSE6130



NEW

PEDICURE FILE – CLASSIC

- Heel file with a handle, made of plastic

It is recommended for the finishing stages of a pedicure to smooth out the skin.

PC PNPE020



TOE SEPARATOR

- Toe separator tool made of polyfoam

This handy tool gently keeps toes separate during gel polish or nail polish application and the treatment of the heel. It facilitates pedicure, gel polish or nail polish application steps at home or in the salon. This toe separator is made of double-layered polyfoam and it is also recommended for sensitive skin.

2 PCS / PACKAGE PNSE513



NEW

PEDICURE SLIPPERS - FOAM

- Disposable slippers for pedicure clients

Hygienic, disposable foam slippers for your clients.

2 PCS / PACKAGE PNPE011



PEDICURE SLIPPERS - POLYFOAM

- Slippers for pedicure clients for multiple use

These slippers are made of soft, thin, washable, sanitizable and highly durable polyfoam.

2 PCS / PACKAGE PNPE010



PERFECT
PURPLE

Nail Art accessories



COLOR CHART WHEEL

■ Color chart wheel with 20 nail art tips arranged like the petals of a daisy

Suitable for displaying nail polish and gel polish colors, professional colored materials, and for demonstrating nail art techniques.

- CLEAR PC PNSE507
- NATURAL PC PNSE508



COLOR CHART STICKS

■ Transparent color chart sticks

These are suitable for displaying nail polish, gel polish and various builder products, as well as nail art techniques.

10 PCS / PACK PNSE597

EXPANDABLE



COLOR CHART STICKS FAN WITH RING

■ Transparent color chart sticks with 30 nail art tips

30 color chart sticks arranged in a fan shape with a latched metallic ring.

30 STICKS / FAN PNSE598



COLOR CHART SPIRAL DISPLAY

■ Transparent color chart sticks arranged in a spiral

Display stand for arranging 120 color chart sticks in a spiral form. The spiral display features a stylish crystal at the top.
HEIGHT: 35cm

120 STICKS / STAND PNSE642

EXPANDABLE



SAMPLE TIP

■ Sample tip ring

Suitable for displaying nail polish and gel polish colors. The rings can easily be placed onto gel polish bottles for display.

- CLEAR 50 PCS / PACK PNTGY003
- WHITE 50 PCS / PACK PNTGY004



MAGNETIC PALETTE RING

■ Mixing palette ring for gel painting

This mini palette is ideal during gel painting to quickly mix colors and store them until you finish the design. It is a practical solution, since your color mixes are all together and easy to reach.

PC PNSE596



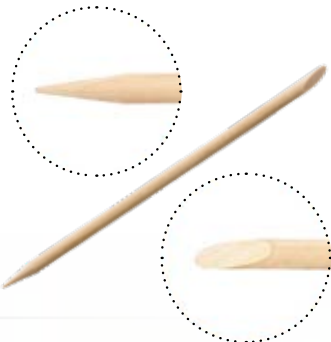
ORANGE WOOD STICK

■ Double-ended orange wood stick

The slanted end is suitable for pushing back the cuticle, while the pointed end allows for an easy positioning of nail art bits and pieces. It is also suitable for wiping any unwanted gel off the side walls, and for painting the smile line and mixing gel products.

LENGTH: 18cm

PC PNSE040



NAIL ART TIP #03

■ Nail art tips in size #03

Suitable for displaying nail polish and gel polish colors, professional colored materials, and for demonstrating nail art techniques.

- WHITE 50 PCS / PACK PNDDT001
- BLACK 50 PCS / PACK PNDDT002
- NUDE 50 PCS / PACK PNDDT003



OUR INSTRUCTORS' FAVORITE

Holdes & dispensers



NAIL POOL FOR DIPPING

■ Dipping pool for quick and easy application of color acrylic powders

The finger guide rail allows the whole surface of the nail covered with nail hardener gel, to be dipped in the acrylic powder simply and smoothly. The special design drastically reduces the time needed for creating French ends. Use colored acrylic powders to create the desired colored nail design.

PC PNSE647



FOR STUDENTS

MANICURE BOWL

■ Soaking bowl made of plastic

Plastic manicure bowl of ergonomic design which conforms to the fingers perfectly, providing the hand with comfortable support..

PC PNSE638



DAPPEN DISH - GLASS

■ Dappen dish made of glass with a metallic lid

Ideal for rationing and applying the liquid ingredients during work. The metallic lid prevents the evaporation of the liquid. Easy to clean.

PC PNSE643



TEMPERATURE-COMPENSATING PORCELAIN

DAPPEN DISH - PORCELAIN

■ Dappen dish made of porcelain with a cork stopper

Liquid container with heat distributing double thickness walls preventing the premature setting of acrylic in warmer and a delayed setting in colder ambient temperatures. The container is corked for an odor-tight sealing. Easy to clean.

PC PNSE218

PUMP DISPENSER BOTTLE

■ Transparent pump dispenser bottle made of plastic

150ml pump dispenser suitable for the easy storing and economic dispensing of various liquids. The open and close lid ensures that your liquid is safely stored, without leaking or evaporating.

PLEASE NOTE: Do not use the Pump Dispenser Bottle to store liquids that contains acetone, because these will damage the bottle.

PC PNSE718



NEW

TIP BOX

■ Tip storage box made of plastic

This clear box has 12 slots to properly organize and store nail tips of various sizes.

PC PNSE540



C-CURVE PLASTIC PINCHING TOOL

■ Pinching tool made of plastic

Suitable for keeping the desired C-curve of the pinched nail enhancement. The C-curve is retained during the curing process of gel, acrylic and acrylgel as well. The strength of the pinching tool can be set by the included rubber bands.

PC PNSE720



NEW

NAIL PADS HOLDER

■ Nail Pads storage box made of plastic

Plastic holder with two clear chambers with lid, designed for Nail Pads.

WIDTH: 12cm | **HEIGHT:** 7.5cm | **DEPTH:** 6.5cm

PC PNSE717



NEW

NAIL PADS ON PAGE 157.

Promo products

APRONS WITH LOGO

■ Recommended for nail techs and salon work

Machine-washable aprons with a neck loop and ties to go around the waist. The black apron is made of water-repellent material and it is somewhat shorter, down to the mid-thigh area. The pink and white aprons are made of cotton, and they are both knee-length.

BLACK: 59 x 70cm | **PINK:** 63 x 82cm | **WHITE:** 63 x 82cm

BLACK

PC

PNRE55

WHITE

PC

PNRE64

PINK

PC

PNRE56



T-SHIRTS WITH LOGO

■ Cotton T-shirts in purple, with logo

These T-shirts are ideal for salon work. They are slim fit, ensuring stylish elegance and comfortable wear.

LOGO WITH RHINESTONES

S PNRE145

M PNRE146

L PNRE147

LOGO WITH METALLIC PRINT

S PNRE166

M PNRE167

L PNRE168



NEW

SLIM-FIT DESIGN

NECK STRAP WITH LOGO

PC PNRE45



PEN WITH LOGO

PC PNRE12



LIGHTER WITH LOGO

PC PNRE47





TOWEL WITH LOGO

- 30 x 50cm towel made of white terrycloth

This terrycloth towel is a great alternative to paper table mats on your workstation during salon work. It is also recommended for pedicure.

PC PNRE62



PERFECT CALENDAR

- Appointment book

This upgraded, smaller planner easily fits into your handbag. It features a weekly layout with an hourly grid from 6 a.m. to 9 p.m. The calendar contains a data sheet, an overview of the year, a monthly grid, as well as colorful inspirational nail photos.

WIDTH: 124mm | **HEIGHT:** 182mm



PERFECT BEAUTY MAGAZINE

- Trend magazine featuring new releases

Our complimentary trend magazine is published regularly and apart from introducing the newest Perfect Nails products, it offers nail tech articles, Perfect tips and tricks, as well as step by step instructions.



PERFECT NAILS CATALOG

- Annually published product catalog

Our complimentary catalog is published annually and it encompasses the current Perfect Nails product range. The catalog lists product features and descriptions, and contains comparison charts and "how to use" sections.

PC PNR044

FOLDER WITH LOGO

- Size A4 paper folder

This premium quality, sturdy paper folder has a matte finish and features a colorful nails design and the Perfect Nails logo. It is an ideal solution for storing certificates.

WIDTH: 210mm | **HEIGHT:** 297mm

PC PNRE46



PAPER BAG

- Environmentally friendly paper bag

White paper bag with the Perfect Nails brand name and logo. Suitable for storing nail files, brushes and nail art tools.

WIDTH: 11.5cm | **HEIGHT:** 23cm | **DEPTH:** 5.5cm

PC PNRE169



PAPER BAG WITH FLAT HANDLES

- Environmentally friendly paper bag in purple

Our reusable and recyclable paper bags promote Perfect sustainability. If you leave our stores with a paper bag full of goodies, you have already made a difference for the environment. When you are done using the bag, make sure to place it into the appropriate recycle bin.

WIDTH: 18cm | **HEIGHT:** 22cm | **DEPTH:** 8cm

PC PNRE149



PAPER BAG WITH ROPE HANDLES

- Decorative paper bag with a shiny finish

This decorative bag is ideal as a gift bag when you want to surprise someone with Perfect Nails products. No extra gift wrapping needed.

WIDTH: 27cm | **HEIGHT:** 35cm | **DEPTH:** 12cm

PC PNRE66



In-store displays



PERFECT NAILS POSTER

■ Size A2 posters

Continuously renewed range of artistic photos on premium paper.

WIDTH: 420mm | **HEIGHT:** 594mm

PERFECT GIRL **PC** PNRE144

JUNGLE GIRL **PC** PNRE156

LACGEL COLLECTION DISPLAY

■ Promotional display for lacgel collections

This handy display offers a neat solution for showcasing the current lacgel collections. The display base has two slots to accommodate various backgrounds that are sold separately. Each background showcases a specific lacgel collection and has two tabs for quick and easy attachment to the base. The display does not take up a lot of space on the counter, offering a practical solution for events and trade shows as well.



BASE **PC** PNSE670

WIDTH: 26cm | **HEIGHT WITHOUT BACKGROUND:** 6cm | **HEIGHT WITH BACKGROUND:** 22cm
DEPTH: 18cm

BACKGROUND

WIDTH: 26cm | **HEIGHT:** 16cm | **HEIGHT WITH TABS:** 20cm



WHITE TAPE WITH LOGO

PC PNRE2

COUNTERTOP DISPLAY FOR GEL POLISH

■ Display stand with 4 shelves and multiple slots for gel polish bottles

This countertop display offers a neat way to organize and showcase the Perfect Nails gel polish range. If you take 15ml bottles, the depth of the shelves allows maximum 3 of them in a row. The clear dividers can be moved horizontally, so 4ml, 8ml and 15ml bottles equally fit snugly into the slots.

WIDTH: 31cm | **HEIGHT:** 63cm | **DEPTH:** 19cm

PC PNSE404



COUNTERTOP DISPLAY FOR NAIL FILES

■ Display stand for nail files made of plastic with 13 vertical slots

This countertop display is ideal for organizing and showcasing nail files and buffers offered by Perfect Nails. Although it does not take up a lot of space on the counter, it is definitely an eye-catching display.

WIDTH: 10cm | **HEIGHT:** 57cm | **DEPTH:** 11cm | **BASE:** 22 x 19cm

PC PNSE704



PRODUCT PRESENTATION DISPLAY

■ Clear display stand made of plastic

Any product can be showcased from the Perfect Nails range. The background, the base and the front have slots to easily swap graphics. We recommend this presentation display for in-store countertops, as well as events and trade shows.

WIDTH: 21cm | **HEIGHT:** 30.5cm | **DEPTH:** 23.5cm

PC PNSE403





**THE IDEAL RETAIL FRANCHISE CONCEPT
FOR NAIL TECH SUPPLIES THAT IS EASILY
ADAPTABLE FOR VARIOUS LOCATIONS
WORLDWIDE.**

Our mission is to provide all-around assistance for our franchise partners, so they can focus 100% on their clients and revenue growth every day.

We aim to form relationships with such talented and ambitious entrepreneur partners, who can embrace the highest standards, expectations and values to contribute to the brand's overall success.



DISTRIBUTOR WANTED!

Go to our website or simply scan the QR Code with your smartphone.
www.perfectnailscompany.com/nail-products-whole-sale



PERFECT DAY WORLDWIDE

QUICK, EASY, DAZZLING DESIGNS

Our training courses feature experienced salon nail technicians sharing all their knowledge with their young, less experienced colleagues eager to develop and get better. These young nail technicians will get information and useful tips regarding the use of the materials, mainly our new products, from the best sources! In 10+ countries of Europe and in 20+ cities, nail tech professionals can gather to share experiences and learn about new trends.





YOUR DISTRIBUTOR



PNR044



This catalog is not to be distributed among residential consumers. We do not assume any liability for any printing errors.

© 1992 - 2021 Copyright | Perfect Nails Kft. | All rights reserved. | perfectnailscompany.com