



PERFECT NAILS

CATALOG 2020-2021

Perfect Nails

worldwide

Since 1992, our priority has been to provide nail technicians with the most perfect, **highest possible quality** products in every category. Today Perfect Nails is listed among the **most innovative** nail enhancement product ranges on the global professional market. We pride ourselves in our Perfect Nails family of top level nail technicians that has constantly expanded **for 30 years** now. **Our courses** and products aim to enable nail technicians to provide top quality services to their clients.



MADAGASCAR MAURITIUS

Contents

Primers, auxiliary liquids, removers	7-9
Nail care, top coat, nail polish	10-13
Base and top gels	14-23
Builder gels	24-39
All-in-one builder lacgels	40-43
Color lacgels	44-55
Lacgel starter kits	56-59
Nail art & color gels	60-69
Perfect AcrylGel	70-73
Acrylic powders	74-81
Color acrylic powders	82-83
Gel and acrylic kits	84-87
Nail files	88-95
Builder & nail art brushes	96-103
Tips and nail forms	104-107
Professional metallic tools & accessories	108-111
Drill bits & sanding bits	112-119
Electric tools & lamps	120-125
Stamping accessories	126-129
Nail art supplies	130-145
Color acrylic paints	146-147
Protective gear	148-151
Salon accessories & tools	152-165

PRIMERS, auxiliary liquids,

removers

PERFECT LINE

■ Anti-lifting liquid

Eliminates lifting and provides a smooth fill line for infills. Reattaches the lifted nail enhancement to the natural nail.

4 ML PNSA205

15 ML PNSA204



PERFECT BOND PRIMER

■ Acid-free liquid adhesive film

Acid-free. Water repelling formula to prevent lifting and fungal infections. Highly recommended for problematic nails.

4 ML PNSA2003

15 ML PNSA2002



ACID PRIMER

■ Acid-based primer liquid

It contains acid and has a distinctive pungent smell, and removes most of the water- and fat-content of the natural nail plate to achieve even better adhesion. Let it dry completely, then apply Perfect Bond Primer or base gel (e.g. Bond Gel Vitamine+, Elastic Hard Gel). Highly recommended for clients with sweaty, clammy hands.

CAUTION! This product is corrosive, so avoid all skin contact. It should only be applied on the natural nail plate. Do not apply on nail enhancements. Please store at room temperature, as cool storage may cause crystallization.

15 ML PNSA847



PURE NAIL

■ Anti-fungal liquid

Special formula containing an anti-fungal agent, tolnaftate, to prevent nail fungus-related issues. Rub one or two drops into the skin folds and onto the nail plate. Helps in reattaching the lifted nail plate onto the nail bed.

4 ML PNSA826

15 ML PNSA818



AVAILABLE
IN SPRAY



PERFECT PREP

■ Nail primer liquid

Liquid nail primer that prevents fungal infections, helps to achieve good adhesion, and also has water repellent and degreasing qualities. An acid-free product with a pH neutralizing effect, recommended for lacgel, gel, acrylic, and AcrylGel techniques. Its skin-friendly formula does not damage the nail plate.

4 ML PNSA825

15 ML PNSA006

30 ML PNSA807

100 ML PNSA808

250 ML PNSA809

500 ML PNSA811

100 ML SPRAY PNSA839



PERFECT CLEAN

■ Multifunctional cleaning liquid

Suitable for cleaning and degreasing nails and skin surfaces, removing the tacky layer as well as the cleaning of tools and surfaces. Displays a pleasant, slightly peachy scent.

100 ML PNSA819

500 ML PNSA820

AVAILABLE
IN SPRAY



BRUSH CLEANER

■ Brush cleaning liquid

Removes any residue from the brushes.

30 ML PNSA804

100 ML PNSA805

250 ML PNSA806

ACRYLGEL SOLUTION

■ Solution developed specifically for Perfect AcrylGel

Perfectly suitable for working with AcrylGel, cleaning the brush and removing the tacky layer. Contains no fragrance and color additives, so it causes no discoloration in the AcrylGel.

100 ML PNZ4057

FOR
ACRYLGEL
SHAPING &
CLEANSING



GEL CLEANER

■ Gel cleanser

Fragrance-free liquid to remove the tacky dispersion layer of cured gel, lacgel and AcrylGel from the nail surface.

30 ML PNSA801

100 ML PNSA802

250 ML PNSA803

500 ML PNSA810



HYPER SHINE CLEANER

■ High shine gel cleanser

Its oil-based skin softening components nourish the cuticles. Always use this product as the finishing step, as the oil content may hinder the adhesion of any subsequent layer of gel or lacgel. With a refreshing tea scent.

100 ML PNSA841

PROVIDES
SUPREME
SHINE



AROMA CLEANER

■ Scented gel cleanser

Scented liquid to remove the tacky dispersion layer of cured gel, lacgel and AcrylGel from the nail surface, providing it with a long-lasting shine

1 000 ML PNSA822

1 000 ML PNSA840

BEST-
SELLER





ARTIFICIAL NAIL REMOVER

- Particularly effective solvent

Solution for the quick removal of tips, acrylic nails and lacgels.

100 ML PNSA702

1 000 ML PNSA703



LACGEL REMOVER

- Lacgel remover solution

Special formula for the gentle and quick removal of the lacgel layer without drying the skin.

100 ML PNSA705

1 000 ML PNSA704



NAIL POLISH REMOVER

- Acetone-free nail polish remover

Recommended for removing traditional nail polish. Removes the nail polish in a gentle, nail-friendly way.

100 ML PNSA600

1 000 ML PNSA601



REMOVER WRAP FOIL

- Cotton wool in aluminium foil

Easily removes any type of lacgel and acrylic nails. The strong foil and the no-tear material prevent the evaporation of the solvent, allowing for a shorter application time.

100 PCS PNSE001



REMOVER CLIPS

- Remover plastic clips

Handy reusable clip for an easy and quick lacgel and acrylic nail removal.

10 PCS / PACK PNSE636

LIQUID

- Standard speed liquid

Compatible with any builder and color acrylic powder. A slight purple-bluish hue helps prevent yellowing and discoloration. Provides maximal adhesion. The perfect choice for both beginners and advanced users.

30 ML PNLQ020

100 ML PNLQ021

250 ML PNLQ022

500 ML PNLQ032



ODORLESS UV/LED LIQUID

- Odorless liquid which cures under UV/LED light

Odorless UV/LED liquid which cures under both UV and LED light. Contains a special agent to promote adhesion and prevent lifting. Enriched with an anti-yellowing formula.

20 ML PNLQ034



INTENSIVE LIQUID

- High speed liquid

Provides a color-enhancing effect; slight purple tone. The perfect choice for both beginners and advanced users. When used in combination with high speed acrylic powders, it provides even faster curing, making it the ideal choice for competitions.

30 ML PNLQ026

100 ML PNLQ027

250 ML PNLQ028

500 ML PNLQ033



DAPPEN DISH – PORCELAIN

- Dappen dish made of porcelain with a cork stopper

Liquid container with heat distributing double thickness walls preventing the premature setting of acrylic in warmer and a delayed setting in colder ambient temperatures. The container is corked for an odor-tight sealing. Easy to clean.

DB PNSE218



TEMPERATURE-COMPENSATING
PORCELAIN

NAIL CARE

top coat, nail polish



NAIL HARDENER

- Nail hardener varnish with bamboo extract

Flexible nail care product with bamboo extract. Recommended for treating weakened natural nails upon the removal of lacgel and gel.

4 ML PNSA471

15 ML PNSA470



CUTICLE SOFTENER

- Skin softener liquid

Light skin solvent to loosen up the dead skin layer for easier manual and machine manicure/ pedicure. Rinse off with soapy water after use.

4 ML PNSA837

15 ML PNSA838



GLASS COAT

- High shine, quick-dry top coat

Quick-dry top coat for nail polish, providing high gloss finish and scratch resistance. An anti-yellowing formula prevents the discoloration of the nail polish.

4 ML PNSA451

15 ML PNSA450



BASE & TOP COAT

- Flexible base/top coat

Strengthens the nails and prevents discoloration. Used as a cover shine it boosts the drying time of the nail polish, and provides it with a vivid, brilliant shine.

4 ML PNSA421

15 ML PNSA420



GEL EFFECT NAIL POLISH

NEW

■ Gel-like nail polish range

More flexible than regular nail polish. This quick drying, durable, easy to apply nail polish provides perfect coverage in the first layer. Dries to an extra shiny surface, providing a lacgel effect on the nails. A base and a top coat is recommended.

PERFECT TIP: Before application, make sure to shake the nail polish bottle to release pigments from the bottom.

DRY TIME: 3–5 minutes



CHERRY
RED

7 ML PNSZL001



WALNUT

7 ML PNSZL002



DUSTY
ROSE

7 ML PNSZL003



BLACK
PANTHER

7 ML PNSZL004



SNOW
WHITE

7 ML PNSZL005



STRAWBERRY

7 ML PNSZL006



MAGENTA

7 ML PNSZL007



PUNCH

7 ML PNSZL008



LIGHT
PINK

7 ML PNSZL009



FLAMINGO
PINK

7 ML PNSZL010

CUTICLE OIL

■ Cuticle revitalizing oil

Rich in almond and peach kernel oil to nourish and treat the natural nail and the skin around the nail plate. Rub a few drops of this revitalizing oil into the cuticle area and around the nail contour, or apply it directly on the natural nail surface.



PINEAPPLE

4 ML PNSA823
15 ML PNSA812



PEACH

4 ML PNSA824
15 ML PNSA480



SPRING
FLOWERS

4 ML PNSA832
15 ML PNSA833



GRAPE

4 ML PNSA844
15 ML PNSA843



STRAWBERRY

4 ML PNSA846
15 ML PNSA845



MARZIPAN

4 ML PNSA849
15 ML PNSA850



WITH
PERFUME
ESSENCE

FLOWER
FUSION

4 ML PNSA851
15 ML PNSA852

NEW

BASE AND

top gels

BOND GEL VITAMINE+

■ Adhesion boosting, flexible base gel with vitamins

Thin, universal base gel to boost the adhesion of various nail enhancement materials, minimizing the chance of lifting from the natural nail surface. Forms a thinner and more readily soluble layer than the traditional bases, and also protects the nails. It provides rock solid adhesion even to problematic nail surfaces.

HEAT PRODUCTION: none | **CURE TIME:** UV 2–3 min., UV/LED 30–60 sec.

PERFECT TIP: For extremely problematic nails use the Hardener Gel after applying Bond Gel Vitamine+.

4 ML PNZ049

15 ML PNZ050

THICKNESS	●
FLEXIBILITY	● ● ● ● ●
SOLUBILITY	● ● ● ● ●



HARDENER GEL

■ Flexible base gel with nail hardening properties

Medium thick, soluble base gel with nail hardening properties. Flexible and bendable to easily follow the movement of the natural nails. Protects the natural nails from impact and damage. It smooths out uneven nail surfaces. Suitable for nail shape correction and fixing of slightly broken-off nail corners.

PLEASE NOTE: The product only allows a very short nail extension with the use of a nail form, as the highly flexible material only provides minimal support.

HEAT PRODUCTION: none | **CURE TIME:** UV 2–3 min., UV/LED 30–60 sec.

4 ML PNZ047

15 ML PNZ048

THICKNESS	● ● ●
FLEXIBILITY	● ● ● ●
SOLUBILITY	● ● ● ●



LACGEL BASE/TOP

■ Flexible base and shine top gel

Medium thick, flexible, soluble base and shine gel providing excellent adhesion. Apply the product on lacgel or on any type of nail enhancement as finishing cover shine. The layer will last and retain its gloss for weeks.

CURE TIME: UV 2–3 min., UV/LED 60–90 sec.

4 ML PNZM000

15 ML PNZ7017

THICKNESS	● ●
FLEXIBILITY	● ● ● ●
SOLUBILITY	● ●





NO CLEANSE TOP SHIELD

■ Slightly flexible, no-cleanser shine top gel

Medium thin, slightly flexible, soluble, non-yellowing shine gel requiring no cleansing. Apply the product in a normal thickness layer on sculpted nails and in an extra thin layer on nails strengthened with Hardener Gel/Elastic Hard Gel. Flexibility is only obtained when applied in a thin layer.

CURE TIME: UV 3–4 min., UV/LED 60–90 sec.

ATTENTION: Upon curing allow a 1 minute relax phase for the gel to retain its shine.

4 ML PNZ051 15 ML PNZ052

THICKNESS	● ●
FLEXIBILITY	● ●
SOLUBILITY	● ● ● ●



FLEXI TOP GLOSS

■ Flexible shine top gel

Medium thick, soluble, flexible, high gloss shine gel with color-enhancing properties. Apply the product on lacgel or on any type of nail enhancement as finishing cover shine. The layer will last and retain its gloss for weeks. A slight bluish tint prevents yellowing and highlights the white nail tips. Requires cleansing after curing.

CURE TIME: UV 2–4 min., UV/LED 60–90 sec.

4 ML PNZ6039 15 ML PNZ6040

THICKNESS	● ● ●
FLEXIBILITY	● ● ● ●
SOLUBILITY	● ● ● ●



SPEED & SHINE TOP GEL

■ Medium flexible, no-cleanser shine top gel

Medium thick, brilliant gloss shine gel requiring no cleansing. Apply the product on lacgel or on any type of nail enhancement as finishing cover shine. A particularly durable layer resistant to chemicals and solvents. The layer will last and retain its gloss for weeks.

CURE TIME: UV 1–3 min., UV/LED 30–60 sec.

ATTENTION: Allow a 1 minute relax phase upon curing for the gel to retain its gloss.

15 ML PNZ6041

THICKNESS	● ● ●
FLEXIBILITY	● ● ●
SOLUBILITY	●

EXTREME GLOSS GEL

■ Flexible, no-cleanser shine top gel

Thick, flexible shine gel requiring no cleansing. Forget cobweb-cracks and yellowing of the nail surface with this beautiful glassy shine. Apply the product on lacgel or on any type of nail enhancement as finishing cover shine. The layer will last and retain its gloss for weeks.

CURE TIME: UV 2–3 min., UV/LED 120 sec.

8 ML PNZ6044 15 ML PNZ6045

THICKNESS	● ● ● ●
FLEXIBILITY	● ● ● ● ●
SOLUBILITY	●



COOL SHINE EVER GEL

■ Flexible, no-cleanser shine top gel with UV protector formula

This is a medium thick, flexible shine gel with UV protector formula that creates a protective shield. Its purplish-blue hue neutralizes the yellowing effect of UV lights. Apply the product on lacgel or on any type of nail enhancement as a top gel. The durable layer will retain its gloss for weeks.

CURE TIME: UV 2–3 min., UV/LED 60–90 sec.

4 ML PNZ6050 15 ML PNZ6051

THICKNESS	● ● ●
FLEXIBILITY	● ● ● ● ●
SOLUBILITY	●



NAIL ART TOP GEL

■ Flexible, surface filler shine top gel

Flexible, high-shine, thick consistency top gel – ideal choice for clear-capping nail art designs to achieve a perfectly smooth surface. It evens out gaps between nail art elements, ensuring their long-lasting adhesion.

PERFECT TIP: Wipe over the surface with dry cotton wool upon application for a beautiful gloss.

CURE TIME: UV 2–3 min., UV/LED 30–60 sec.

15 ML PNZ077

THICKNESS	● ● ● ●
FLEXIBILITY	● ● ● ●
SOLUBILITY	● ● ● ●



COLOR TOP GEL

■ Slightly flexible, no-cleanse colored semi-top shine gels

Medium thick, slightly flexible, colored semi-top shine gels requiring no cleansing. This top gel offers only a slight flexibility, so apply it with the usual thickness on nail enhancements, but apply only a super thin layer on reinforced nails. Flexibility is only obtained when applied in a thin layer. Suitable for baby boomer and rose quartz techniques, and even for 2-step extra quick nail bed extensions

CURE TIME: UV 2–4 min., UV/LED 60–90 sec.



THICKNESS	● ● ●
FLEXIBILITY	● ●
SOLUBILITY	●

VELVET MATT EXTRA GEL

■ Flexible, no-cleanse extra matte top gel

Medium thick, flexible, no-cleanse top gel that creates an extra matte, velvety surface on any color without modifying the applied lacgel's hue. The matte finish is long-lasting and does not become shiny with time. Apply the product on lacgel or on any type of nail enhancement as a top gel.

CURE TIME: UV 3 min., UV/LED 120 sec.

8 ML PNZ6048 15 ML PNZ6049

THICKNESS	● ●
FLEXIBILITY	● ● ● ● ●
SOLUBILITY	●



GLOW UP GEL

■ Flexible, transparent shine top gel that glows in the dark

Medium thin, flexible, transparent and fluorescent top gel which absorbs light, then emits it in the dark. Applied over any color it will make it glow in the dark, without affecting the tone. Suitable for radiant decorations and making the whole nail surface glow. Requires a shine gel layer upon curing. Non-soluble.

CURE TIME: UV 2–3 min., UV/LED 30–60 sec.

8 ML PNZ6042

THICKNESS	● ●
FLEXIBILITY	● ●
SOLUBILITY	●



NAILS:
Évi Darabos – Master Trainer

TOP GEL

■ Non-flexible, no-cleanse shine top gels

Medium thin shine gel requiring no cleansing. Forms an extra strong and tough protective layer for a durable shine that will last for weeks. Rigid, only use on the surface of nail builder materials.

CURE TIME: UV 2–3 min., UV/LED 60–90 sec.



CLEAR	15 ML PNZ0002
SHINE GOLD	15 ML PNZ0004
SHINE SILVER	15 ML PNZ0003

THICKNESS	● ●
FLEXIBILITY	●
SOLUBILITY	●

BASE AND BUILDER GELS – COMPARISON TABLE

WHAT TO USE TOGETHER AND HOW

PRODUCT NAME	PRODUCT FEATURES	USE	PRODUCT COMBINATION	COLOR	COVERAGE	CONSISTENCY		FLEXIBILITY	CURE TYPE	CURE TIME	CLEANSED SURFACE	SURFACE WHEN CURED, STICKINESS	CLEANSING	HEAT PRODUCTION	SOLUBILITY	SOAK-OFF TIME	DURABILITY
Bond Gel Vitamine+	base gel with vitamins	nail preparation (dry manicure) + Perfect Prep	LacGel, LacGel Plus, LacGel Rapid, Hardener Gel, Elastic Hard Gel, LacGel Base/Top, Premium Gel, LacGel Effect, LacGel Cat Eye	transparent, water clear	✖	●		●●●●●	UV, UV/LED	2–3 min., 30–60 sec.	●	✓	✖	●	●●●●●	5–8 min.	2 weeks
Hardener Gel	base gel suitable for nail correction	nail preparation (dry manicure) + Perfect Prep	LacGel, LacGel Plus, LacGel Rapid, LacGel Base/Top, LacGel Effect, LacGel Cat Eye	transparent, slight purple tone	✖	●●●		●●●●●	UV, UV/LED	2–3 min., 30–60 sec.	●	✓	✖	●	●●●●●	8–15 min.	3–4 weeks
Elastic Hard Gel	brush-applicable base & builder gel	nail preparation (dry manicure) + Perfect Prep	LacGel, LacGel Plus, LacGel Rapid, LacGel Glass, LacGel Effect, LacGel Cat Eye	transparent, water clear	✖	●●●●●		●●●	UV, UV/LED	2–3 min., 30–60 sec.	●●●	✓	✖	●●	●●●●●	8–15 min.	3–4 weeks
Elastic Gels	brush-applicable base, builder & nail bed extension gel	nail preparation (dry manicure) + Perfect Prep	LacGel, LacGel Plus, LacGel Rapid, LacGel Effect, LacGel Cat Eye	various nude tones	✓	●●●		●●●	UV, UV/LED	2–3 min., 30–60 sec.	●●●	✓	✖	●●	●●●●●	8–15 min.	3–4 weeks
Fiber Vitamine Gel	brush-applicable base & builder gel with color-enhancing properties and glass fibre	nail preparation (dry manicure) + Perfect Prep	LacGel, LacGel Plus, LacGel Rapid, LacGel Effect, LacGel Cat Eye	milky white	✓	●●●●●		●●●	UV, UV/LED	2–3 min., 30–60 sec.	●●●	✓	✖	●●	●●●●●	8–15 min.	3–4 weeks

CONSISTENCY

● thin | ●● medium thin | ●●● medium thick | ●●●● thick | ●●●●● very thick

FLEXIBILITY

● rigid | ●● slightly flexible | ●●● medium flexible | ●●●● flexible | ●●●●● highly flexible

SOLUBILITY

● non-soluble | ●● low solubility | ●●● medium solubility | ●●●● soluble | ●●●●● good solubility

CLEANSED SURFACE

● matte | ●● slight gloss | ●●● medium gloss | ●●●● gloss | ●●●●● brilliant gloss

HEAT PRODUCTION

● none | ●● slight | ●●● medium | ●●●● high | ●●●●● very high

TOP GELS – COMPARISON TABLE

WHAT TO USE TOGETHER AND HOW

PRODUCT NAME	PRODUCT FEATURES	USE	PRODUCT COMBINATION	COLOR	CONSISTENCY		FLEXIBILITY	CURE TYPE	CURE TIME	CLEANSSED SURFACE	SURFACE WHEN CURED, STICKINESS	CLEANSING	HEAT PRODUCTION	SOLUBILITY	SOAK-OFF TIME	DURABILITY
No Cleanse Top Shield	no-cleanse shine top gel	apply on filed and dust-free surface in a normal thickness layer or, on lacgel colors, in a thin layer	strengthening + lacgel, any type of nail enhancement	transparent, water clear, slight purple tone	●●		●●	UV, UV/LED	3–4 min., 60–90 sec.	●●●●	✗	✗	●●	●●●●	8–15 min.	2–3 weeks
Flexi Top Gloss	shine top gel with color-enhancing properties	apply on filed and dust-free surface of lacgel colors, in a normal thickness layer	any lacgel, any type of nail enhancement	transparent, water clear, slight blue tone	●●●		●●●●	UV, UV/LED	2–4 min., 60–90 sec.	●●●●●	✓	✓	●●	●●●●	8–15 min.	2–3 weeks
Speed & Shine Top Gel	quick curing shine top gel	apply on filed and dust-free surface in a normal thickness layer or, on lacgel colors, in a thin layer	strengthening + lacgel, any type of nail enhancement	transparent, water clear	●●●		●●●	UV, UV/LED	1–3 min., 30–60 sec.	●●●●●	✗	✗	●●	●	-	2–3 weeks
Extreme Gloss Gel	extremely high shine top gel	apply on filed and dust-free surface of lacgel colors, in a thin thickness layer	any lacgel, any type of nail enhancement	transparent, water clear	●●●●		●●●●●	UV, UV/LED	2–3 p, 120 mp	●●●●●	✗	✗	●●	●	-	2–3 weeks
Cool Shine Ever Gel	shine top gel with UV protector formula and glistening water effect	apply on filed and dust-free surface of lacgel colors, in a normal thickness layer	any lacgel, any type of nail enhancement	transparent, water clear, slight purple tone	●●●		●●●●●	UV, UV/LED	2–3 min., 60–90 sec.	●●●●●	✗	✗	●●	●	-	2–3 weeks
LacGel Base/Top	flexible base and shine top gel	when used as a base: nail preparation + Perfect Prep, when used as a cover layer: apply on filed and dust-free surface of lacgel colors	as a base: any lacgel; as a cover layer: LacGel, LacGel Plus, LacGel Rapid, Hardener Gel, Elastic Gels	transparent, water clear	●●		●●●●	UV, UV/LED	2–3 min., 60–90 sec.	●●●●	✓	base top ✗ ✓	●●	●●	8–15 min.	2–3 weeks
Velvet Matt Extra Gel	velvety, extra matte top gel	apply on filed and dust-free surface of lacgel colors, in a normal thickness layer	any lacgel, any type of nail enhancement	transparent, water clear	●●		●●●●●	UV, UV/LED	3 min., 120 sec.	●	✗	✗	●	●	-	2–3 weeks
Color Top Gel	colored semi-top gel	apply on filed and dust-free surface in a thin thickness layer	rigid builder acrylic, gel, strengthening + lacgel	various nude colors	●●●		●●	UV, UV/LED	2–4 min., 60–90 sec.	●●●●	✗	✗	●	●	-	2–3 weeks
Top Gel	rigid shine top gel	apply on filed and dust-free surface in a normal thickness layer	rigid builder acrylic, gel	transparent, water clear	●●		●	UV, UV/LED	2–3 min., 60–90 sec.	●●●●●	✗	✗	●●	●	-	2–3 weeks
Nail Art Top Gel	shine top gel with surface filling properties	apply on filed and dust-free surface of lacgel colors	any lacgel, any type of nail enhancement	transparent, water clear	●●●●		●●●●	UV, UV/LED	2–3 min., 60–90 sec.	●●●●●	✓	✓	●	●●●●	8–15 min.	2–3 weeks
Glow Up Gel	glow-in-the-dark shine top gel	apply on filed and dust-free surface of lacgel colors	any lacgel, any type of nail enhancement	transparent, water clear	●●		●●	UV, UV/LED	2–3 min., 60–90 sec.	●●●	✓	✓	●	●	-	2–3 weeks

CONSISTENCY

● thin | ●● medium thin | ●●● medium thick | ●●●● thick | ●●●●● very thick

FLEXIBILITY

● rigid | ●● slightly flexible | ●●● medium flexible | ●●●● flexible | ●●●●● highly flexible

SOLUBILITY

● non-soluble | ●● low solubility | ●●● medium solubility | ●●●● soluble | ●●●●● good solubility

CLEANSSED SURFACE

● matte | ●● slight gloss | ●●● medium gloss | ●●●● gloss | ●●●●● brilliant gloss

HEAT PRODUCTION

● none | ●● slight | ●●● medium | ●●●● high | ●●●●● very high

BUILDER

gels



Basic Gels

Basic builder gels

Range of medium thick, self-spreading gels which adhere perfectly to natural nails. These gels are easy to apply and file, and produce little heat and dust. Equally suitable for tip-gel techniques, sculpting and infill.

PLEASE NOTE: This gel range won't cure with traditional LED lamps, only in UV light.

CURE TIME: UV 2-4 min., UV/LED 60–90 sec.

BASIC BLUE GEL

Builder gel of bluish tone, with color-enhancing properties

Suitable for base layers and C-curves. Requires cleansing after curing. Recommended for both beginners and experienced nail technicians.

PHASE: single-phase | **HEAT PRODUCTION:** minimal | **CURE TIME:** UV 2–4 min., UV/LED 60–90 sec.

15 G PNZ6037

50 G PNZ6038

THICKNESS ● ● ●

FLEXIBILITY ●



BASIC WHITE GEL

Natural white builder gel

Even one thin layer provides good, spotless coverage. A clear base coat is needed before applying this white multiphase gel. Requires cleansing after curing.

PERFECT TIP: Due to the high pigment content, this product is best applied in a thin layer, and longer cure time should be allowed.

PHASE: multiphase | **HEAT PRODUCTION:** minimal | **CURE TIME:** UV 2-4 min., UV/LED 60–90 sec.

15 G PNZ6026

50 G PNZ6027

THICKNESS ● ● ●

FLEXIBILITY ●



BASIC COVER DARK GEL

Dark tone nail bed extension gel

Even one thin layer provides good, spotless coverage. A clear base coat is needed before applying this multiphase gel. After sculpting, a cover layer of Clear gel should be applied. Requires cleansing after curing. Recommended for lighter skin tones.

PERFECT TIP: A gentle stirring before application is recommended. Due to the high pigment content, this product should be applied in a thin layer, and longer cure time should be allowed.

PHASE: multiphase | **HEAT PRODUCTION:** minimal | **CURE TIME:** UV 2-4 min., UV/LED 60–90 sec.

15 G PNZ6028

50 G PNZ6029

THICKNESS ● ● ●

FLEXIBILITY ●



Clear Gels

■ Clear builder gels



PREMIUM GEL

■ Medium thin, self-spreading builder gel with color-enhancing properties

Color-enhancing properties due to the purplish tone. Provides steady adhesion on the natural nails, without a separate base layer. Highly flexible and bendable, retains the C-curve; easy to file. Due to its flexibility, it may only be used with flexible top coat. Retains shine after cleansing.

PERFECT TIP: Its outstanding flexibility makes this product highly suitable for strengthening natural nails or the slight extension of nails (size XS: 0.5–1 mm).

PHASE: single-phase | **HEAT PRODUCTION:** minimal | **CURE TIME:** UV 2 min., UV/LED 60 sec.

5 G	PNZ041	15 G	PNZ042	THICKNESS	● ●
30 G	PNZ043	50 G	PNZ044	FLEXIBILITY	● ● ● ● ●



PLATINUM GEL

■ Medium thick, builder gel of platinum shine

Provides outstanding adhesion to the natural nails, without a separate base layer. Leaves a durable, tough and solid surface; readily shaped, spreads perfectly without smearing; bends well, and retains the C-curve. Low dust production when filed. Retains shine after cleansing.

PERFECT TIP: Recommended for strengthening and medium (size M: approx. 1 cm) extension of nails. Readily mixes with pigment powders and other decorative materials.

PHASE: single-phase | **HEAT PRODUCTION:** minimal | **CURE TIME:** UV 2 min. UV/LED 60 sec.

5 G	PNZ037	15 G	PNZ038	THICKNESS	● ● ●
30 G	PNZ039	50 G	PNZ040	FLEXIBILITY	● ● ● ● ●

EXTREME WHITENING GEL

■ Thick and transparent builder gel with whitening properties

Slight purple tone, with UV filtering and optical color-enhancing properties. Provides steady adhesion on the natural nails, without a separate base layer. Thick, still readily shaped; spreads perfectly without smearing. Slightly flexible, bends well, and retains the C-curve. Low dust production when filed. Remains shiny after cleansing.

PHASE: single-phase | **HEAT PRODUCTION:** slight | **CURE TIME:** UV 3 min., UV/LED 60 sec.

15 G	PNZ096	50 G	PNZ097	THICKNESS	● ● ● ●
				FLEXIBILITY	● ●



NO BURN GEL

■ Medium thick, transparent builder gel with almost no burning sensation

Creamy consistency, easy application, spreads readily without smearing, retains shape. Slightly flexible, bends well, and retains the C-curve. Crystal clear, contains no pigments, won't yellow. Cures without producing heat; retains shine after cleansing.

PHASE: single-phase | **HEAT PRODUCTION:** almost none | **CURE TIME:** UV 3 min., UV/LED 60 sec.

15 G	PNZ102	50 G	PNZ103	THICKNESS	● ● ●
				FLEXIBILITY	● ●



ICE GEL

■ Very thick yet softly spreading builder gel with color-enhancing effect

Color-enhancing properties due to the bluish tone. Provides steady adhesion on the natural nails, without a separate base layer. Beyond the standard nail shapes this product is also suitable for sculpting extra long nails & extreme nail shapes, as it won't smear. Remains shiny after cleansing.

PERFECT TIP: Recommended for salon nails and size L (1.5–2 cm) nail extensions.

PHASE: single-phase | **HEAT PRODUCTION:** high | **CURE TIME:** UV 2–3 min., UV/LED 60 sec.

5 G	PNZ4034	15 G	PNZ4035	THICKNESS	● ● ● ●
30 G	PNZ4036	50 G	PNZ4037	FLEXIBILITY	●





ACTIVE CLEAR GEL

Very thick builder gel of creamy texture and violet tone

Provides steady adhesion to the natural nails, without a separate base layer. Perfectly suitable for extreme nail shapes and bending. Remains shiny after cleansing.

PHASE: single-phase | HEAT PRODUCTION: high | CURE TIME: UV 2–3 min., UV/LED 60 sec.

5 G PNZ4048

15 G PNZ4038

THICKNESS ● ● ● ●

FLEXIBILITY ●



CRYSTAL CLEAR GEL

Crystal clear thick, yet easily spreading builder gel

Provides steady adhesion to the natural nails, without a separate base layer. An easy-to-handle consistency makes it perfect for thin base layers and C-curves; won't smear. Recommended for both beginners and professionals. Remains shiny after cleansing.

PERFECT TIP: Recommended for salon nails and size L (1.5–2 cm) nail extensions.

PHASE: single-phase | HEAT PRODUCTION: high | CURE TIME: UV 2–3 min., UV/LED 60 sec.

5 G PNZ4030

15 G PNZ4031

30 G PNZ4032

50 G PNZ4033

THICKNESS ● ● ● ●

FLEXIBILITY ●



NAILS:
Évi Darabos – Master Trainer

White Gels

White builder and cover gels

EXTREME WHITE GEL

Medium thick, extremely white, self-spreading builder gel

Allows for a perfectly smooth and level surface, offers outstanding shape retention. Recommended for working on the French free edge. Allows creating a clear-cut, contoured smile-line. A multiphase gel requiring a Clear gel cover layer. Requires cleansing at the end of the process.

PHASE: multiphase | HEAT PRODUCTION: slight | CURE TIME: UV 2–3 min., UV/LED 60–90 sec.

5 G PNZ4026

15 G PNZ4023

30 G PNZ4024

THICKNESS ● ● ●

FLEXIBILITY ● ●



OLYMPIC
CHAMPION
MATERIAL

EXTREMELY
WHITE

WHITE BABE GEL

Medium thin, well spreading white gel providing slight coverage

Provides steady adhesion on the natural nails, without a separate base layer. Ideal for natural-looking nail enhancements. A slightly translucent white tone for easier gradients. Requires cleansing at the end of the process.

PHASE: single-phase | HEAT PRODUCTION: high | CURE TIME: UV 2–3 min., UV/LED 60–90 sec.

15 G PNZ061

30 G PNZ062

THICKNESS ● ●

FLEXIBILITY ●



MILKY
WHITE

FOR
BABY BOOMER
TECHNIQUE

Pink Gels

■ Pink builder gels



LIGHT PINK GEL

■ Medium thin, light pink builder gel

Provides remarkable adhesion on the natural nails, without a separate base layer; readily shaped. Recommended for creating natural-looking nail beds. Enhances the color of the natural nails, and makes it easier to match the tone of the nail bed extension gels with that of the skin. Requires cleansing at the end of the process.

PHASE: single-phase | **HEAT PRODUCTION:** high | **CURE TIME:** UV 2–3 min., UV/LED 60–90 sec.

5 G PNZ4052
30 G PNZ4022

15 G PNZ4021
50 G PNZ4025

THICKNESS	● ●
FLEXIBILITY	●



PINK BABE GEL

■ Very thick, baby pink gel providing slight coverage

Provides steady adhesion on the natural nails, without a separate base layer. Ideal for creating natural-looking nail enhancements, the Baby Boomer design or as a filler for French nail enhancements. The transparency of this product allows for creating the gradient effect with only a few strokes. Holds the C-curve perfectly, which makes it ideal for creating extreme shapes. Requires cleansing at the end of the process.

PHASE: single-phase | **HEAT PRODUCTION:** high | **CURE TIME:** UV 2–3 minutes, UV/LED 60–90 seconds

15 G PNZ073
50 G PNZ075

30 G PNZ074

THICKNESS	● ● ● ● ●
FLEXIBILITY	●



ACTIVE PINK GEL

■ Very thick, crystal clear, pink builder gel

Provides steady adhesion on the natural nails, without a separate base layer. It boosts and intensifies the nail bed color. Bendable and won't smear, making it highly suitable for nail bed extension and creating extreme nail shapes. Requires cleansing at the end of the process.

PERFECT TIP: Recommended for experienced nail technicians.

PHASE: single-phase | **HEAT PRODUCTION:** high | **CURE TIME:** UV 2–3 min., UV/LED 60–90 sec.

5 G PNZ6008
30 G PNZ6006

15 G PNZ6005
50 G PNZ6007

THICKNESS	● ● ● ● ●
FLEXIBILITY	●

Cover Gels

■ Nail bed extension gels

COVER GEL

■ Highly pigmented, natural pink nail bed extension gel

Provides steady adhesion on the natural nails, without a separate base layer. The warm tone goes well with the natural color of the nail, and covers up any imperfections. The smile line will show no grow-out. Even one thin layer provides good, spotless coverage. Requires cleansing at the end of the process.

PHASE: single-phase | **HEAT PRODUCTION:** minimal | **CURE TIME:** UV 2–3 min., UV/LED 60–90 sec.

5 G PNZ6020
30 G PNZ6017

15 G PNZ6016
50 G PNZ6021

THICKNESS	● ● ●
FLEXIBILITY	● ●



NAIL
TECHNICIANS'
FAVORITE

BUILD & FILL COVER ROUGE GEL

■ Medium thick, darker tone builder & nail bed extension gel

The darker tone highlights the white French tip. Ideal for filing the smile line when sculpting a French nail, and suitable for infills as well. Self-spreading, yet retains shape. Provides good coverage in a thicker layer and a nice gradient in a thinner layer.

PHASE: single-phase | **HEAT PRODUCTION:** slight | **CURE TIME:** UV 2–3 min., UV/LED 60–90 sec.

15 G PNZ100

50 G PNZ101

THICKNESS	● ● ●
FLEXIBILITY	● ●



BUILD & FILL COVER BLUSH GEL

■ Thick, lighter tone builder & nail bed extension gel

The perfect choice for lighter skin tones. Ideal for filing the smile line when sculpting a French nail, and suitable for infills as well. Self-spreading, yet retains shape. Provides good coverage in a thicker layer and a nice gradient in a thinner layer.

PHASE: single-phase | **HEAT PRODUCTION:** slight | **CURE TIME:** UV 2–3 min., UV/LED 60–90 sec.

15 G PNZ098

50 G PNZ099

THICKNESS	● ● ● ● ●
FLEXIBILITY	● ●





OUR NR.1.
COLOR

COVER ROSE GEL

■ Medium thick, natural pink nail bed extension gel

Provides perfect coverage; easy to apply. Provides steady adhesion on the natural nails, without a separate base layer. Requires cleansing at the end of the process.

PHASE: single-phase | **HEAT PRODUCTION:** minimal | **CURE TIME:** UV 2–3 min., UV/LED 60–90 sec.

5 G PNZ6032

15 G PNZ6033

30 G PNZ6034

THICKNESS ● ●

FLEXIBILITY ● ●



COVER NUDE GEL

■ Highly pigmented, medium thick, nail bed extension gel of nude tone

Creamy texture, easy to handle. Spreads readily, and won't smear, suitable for creating natural gradients. Provides steady adhesion on the natural nails, without a separate base layer. The color goes well with the natural tone of the nail, and covers up any imperfections. The smile line will show no grow-out. Requires cleansing at the end of the process.

PERFECT TIP: Perfect choice for both competitions and salon work.

PHASE: single-phase | **HEAT PRODUCTION:** minimal | **CURE TIME:** UV 2–3 min., UV/LED 60–90 sec.

15 G PNZ064

30 G PNZ065

50 G PNZ066

THICKNESS ● ●

FLEXIBILITY ● ●



FOR
BABY BOOMER
TECHNIQUE

COVER BABE GEL

■ Very thick, peachy pink nail bed extension gel

Provides steady adhesion on the natural nails, without a separate base layer. Ideal for creating natural-looking nail enhancements, the Baby Boomer technique or as a filler for French nail jobs. Slightly transparent, so the gradient can be created with a few movements. Requires cleansing at the end of the process.

PHASE: single-phase | **HEAT PRODUCTION:** high | **CURE TIME:** UV 2–3 min., UV/LED 60–90 sec.

15 G PNZ067

30 G PNZ068

50 G PNZ069

THICKNESS ● ● ● ● ● ●

FLEXIBILITY ● ●

COVER PEACH GEL

■ Medium thick nail bed extension gel of lighter peach tone

A multiphase cover gel which requires a clear base layer and a cover layer of Clear gel. Covers the imperfections of the natural nail perfectly. Extremely easy to apply and handle. The smile-line remains free of any grow-out. Requires cleansing at the end of the process.

PHASE: multiphase | **HEAT PRODUCTION:** minimal | **CURE TIME:** UV 2–3 min., UV/LED 60–90 sec.

5 G PNZ6022

15 G PNZ6018

30 G PNZ6019

THICKNESS ● ● ●

FLEXIBILITY ● ●



COVER TAN GEL

■ Medium thin, highly pigmented nail bed extension gel of slightly brownish tone

Provides steady adhesion on the natural nails, without a separate base layer. The warmer, deeper color of this gel makes it an ideal choice for medium and medium-dark skin tones. Spreads readily, and won't smear. Even a thin layer will provide total and spotless coverage. Requires cleansing at the end of the process.

PHASE: single-phase | **HEAT PRODUCTION:** minimal | **CURE TIME:** UV 2–3 min., UV/LED 60–90 sec.

5 G PNZ4047

15 G PNZ4045

30 G PNZ4046

THICKNESS ● ●

FLEXIBILITY ● ●



COVER EXTRA GEL

■ Very thick, highly pigmented nail bed extension gel of darker tone

Provides steady adhesion on the natural nails, without a separate base layer. Ideal for building the appropriate nail structure for a French nail. The ultra light texture allows for a one-step shaping of the smile line. Not self-leveling, therefore retains the created shape even in the hottest temperatures. Requires cleansing at the end of the process.

PHASE: single-phase | **HEAT PRODUCTION:** high | **CURE TIME:** UV 2–3 min., UV/LED 60–90 sec.

15 G PNZ070

30 G PNZ071

50 G PNZ072

THICKNESS ● ● ● ● ● ●

FLEXIBILITY ● ●





BARBIE PINK

CREAM PINK GEL

■ Medium thick, Barbie pink builder & nail bed extension gel

Ideal for building and surface decoration of nail bases. Provides an exquisite French manicure effect. Provides steady adhesion on the natural nails, without a separate base layer. Requires cleansing at the end of the process.

PERFECT TIP: Suitable for building nails up to size L.

PHASE: single-phase | **HEAT PRODUCTION:** minimal | **CURE TIME:** UV 2–3 min., UV/LED 60–90 sec.

5 G PNZ6023

15 G PNZ6002

30 G PNZ6004

THICKNESS ● ●

FLEXIBILITY ● ●



PEARLY SILVER SHINE

COVER SILVER SHINE GEL

■ Cover gel of a pearly silver shine

A multiphase cover gel which requires a clear base layer and a cover layer of Clear gel.

PHASE: multiphase | **HEAT PRODUCTION:** medium | **CURE TIME:** UV 2–3 min., UV/LED 60–90 sec.

5 G PNZ6012

15 G PNZ6013

THICKNESS ● ● ●

FLEXIBILITY ● ●



PEARLY GOLD SHINE

COVER GOLD SHINE GEL

■ Cover gel of a pearly gold shine

A multiphase cover gel which requires a clear base layer and a cover layer of Clear gel.

PHASE: multiphase | **HEAT PRODUCTION:** medium | **CURE TIME:** UV 2–3 min., UV/LED 60–90 sec.

5 G PNZ6014

15 G PNZ6015

THICKNESS ● ● ●

FLEXIBILITY ● ●

Be the next successful Perfect Nails partner!



BUILDER GELS – COMPARISON TABLE

WHAT TO USE TOGETHER AND HOW

PRODUCT NAME	PRODUCT FEATURES	USE	PRODUCT COMBINATION	COLOR	COVERAGE		CONSISTENCY	FLEXIBILITY	NAIL HARDENING	NAIL EXTENSION	BENDABLE	PHASE	CURE TYPE	CURE TIME	HEAT PRODUCTION	CLEANSING
Basic Gels	builder & nail extension gels for tip-gel techniques, building and infill	nail preparation (dry manicure) + Perfect Prep + Perfect Bond Primer	Bond Gel Vitamine+, Cover Gels, Extreme White Gel, Top Gels, LacGels	various tones	varies		●●●	●	✓	S	✗	multi	UV, UV/LED	2–4 min, 60–90 sec	●●	✓
Premium Gel	builder gel with color-enhancing properties	nail preparation (dry manicure) + Perfect Prep + Perfect Bond Primer	Bond Gel Vitamine+, Cover Gels, Extreme White Gel, Top Gels, LacGels	transparent, water clear, violet tone	✗		●●	●●●●●	✓	XS	✓	single	UV, UV/LED	2 min, 60 sec	●●	✓
Platinum Gel	builder gel with platinum shine	nail preparation (dry manicure) + Perfect Prep + Perfect Bond Primer	Bond Gel Vitamine+, Cover Gels, Extreme White Gel, Top Gels, LacGels	transparent, water clear, slight purple tone	✗		●●●	●●●●●	✓	M	✓	single	UV, UV/LED	2 min, 60 sec	●●	✓
Extreme Whitening Gel	builder gel with whitening effect and optical color-enhancing properties	nail preparation (dry manicure) + Perfect Prep + Perfect Bond Primer	Bond Gel Vitamine+, Cover Gels, Extreme White Gel, Top Gels, LacGels	transparent, water clear	✗		●●●●	●●	✓	L	✓	single	UV, UV/LED	3 min, 60 sec	●●●	✓
No Burn Gel	builder gel with almost no burning sensation	nail preparation (dry manicure) + Perfect Prep + Perfect Bond Primer	Bond Gel Vitamine+, Cover Gels, Extreme White Gel, Top Gels, LacGels	transparent, water clear	✗		●●●	●●	✓	L	✓	single	UV, UV/LED	3 min, 60 sec	●	✓
Ice Gel	builder gel with color-enhancing properties, for extreme nail lengths and shapes	nail preparation (dry manicure) + Perfect Prep + Perfect Bond Primer	Bond Gel Vitamine+, Cover Gels, Extreme White Gel, Top Gels, LacGels	slightly bluish	✗		●●●●	●	✓	L	✓	single	UV, UV/LED	2–3 min, 60 sec	●●●●●	✓
Crystal Clear Gel	builder gel for creating size L nails	nail preparation (dry manicure) + Perfect Prep + Perfect Bond Primer	Bond Gel Vitamine+, Cover Gels, Extreme White Gel, Top Gels, LacGels	transparent, crystal clear	✗		●●●●	●	✓	L	✓	single	UV, UV/LED	2–3 min, 60 sec	●●●●●	✓
Active Clear Gel	builder gel for creating extreme shapes	nail preparation (dry manicure) + Perfect Prep + Perfect Bond Primer	Bond Gel Vitamine+, Cover Gels, Extreme White Gel, Top Gels, LacGels	transparent, violet tone	✗		●●●●	●	✓	L	✓	single	UV, UV/LED	2–3 min, 60 sec	●●●●●	✓
Extreme White Gel	builder gel for creating French free edges	goes on the base layer, requires no cleansing	Bond Gel Vitamine+, Clear Gels, Cover Gels, Top Gels	extremely white	✓		●●●	●●	✗	XL	✓	multi	UV, UV/LED	2–3 min, 60–90 sec	●●●	✓
White Babe Gel	slight coverage for baby boomer technique	nail preparation (dry manicure) + Perfect Prep + Perfect Bond Primer	Bond Gel Vitamine+, Clear Gels, Cover Gels, Top Gels	milky white	✓		●●	●	✓	L	✓	single	UV, UV/LED	2–3 min, 60–90 sec	●●●●●	✓
Light Pink Gel	builder gel for intensifying the nail bed color	nail preparation (dry manicure) + Perfect Prep + Perfect Bond Primer	Bond Gel Vitamine+, Cover Gels, Extreme White Gel, Top Gels, LacGels	milky pink	✗		●●	●	✓	M	✓	single	UV, UV/LED	2–3 min, 60–90 sec	●●●●●	✓

CONSISTENCY

● thin | ●● medium thin | ●●● medium thick | ●●●● thick | ●●●●● very thick

FLEXIBILITY

● rigid | ●● slightly flexible | ●●● medium flexible | ●●●● flexible | ●●●●● highly flexible

HEAT PRODUCTION

● almost none | ●● minimal | ●●● slight | ●●●● medium | ●●●●● high

BUILDER GELS – COMPARISON TABLE

WHAT TO USE TOGETHER AND HOW

PRODUCT NAME	PRODUCT FEATURES	USE	PRODUCT COMBINATION	COLOR	COVERAGE		CONSISTENCY	FLEXIBILITY	NAIL HARDENING	NAIL EXTENSION	BENDABLE	PHASE	CURE TYPE	CURE TIME	HEAT PRODUCTION	CLEANSING
Pink Babe , Cover Babe, Cover Extra Gel	builder & nail bed extension gel, also suitable for baby boomer technique	nail preparation (dry manicure) + Perfect Prep + Perfect Bond Primer	Clear Gels, Extreme White Gel, Mega White Gel, Top Gels	baby pink, light pink & deep pink	✓		●●●●●	●	✓	L	✓	single	UV, UV/LED	2–3 min, 60–90 sec	●●●●●	✓
Active Pink Gel	builder gel for intensifying the nail bed color	nail preparation (dry manicure) + Perfect Prep + Perfect Bond Primer	Bond Gel Vitamine+, Cover Gels, Extreme White Gel, Top Gels, LacGels	glassy pink	✗		●●●●●	●	✓	XL	✓	single	UV, UV/LED	2–3 min, 60–90 sec	●●●●●	✓
Cover Gel	highly pigmented nail bed extension gel	nail preparation (dry manicure) + Perfect Prep + Perfect Bond Primer	Bond Gel Vitamine+, Extreme White Gel, Clear Gels, Top Gels	warm pink tone	✓		●●●	●●	✗	M	✓	single	UV, UV/LED	2–3 min, 60–90 sec	●●	✓
Build & Fill Blush / Rouge Gel	nail bed extension gel also suitable for infill	nail preparation (dry manicure) + Perfect Prep + Perfect Bond Primer	Cover Gels, Extreme White Gel, Clear Gels, Top Gels	lighter & darker meat tone	✓		●●●●	●●	✓	M	✓	single	UV, UV/LED	2–3 min, 60–90 sec	●●●	✓
Cover Nude Gel	highly pigmented nail bed extension gel	nail preparation (dry manicure) + Perfect Prep + Perfect Bond Primer	Cover Gels, Extreme White Gel, Clear Gels, Top Gels	lighter natural pink tone	✓		●●	●●	✗	M	✓	single	UV, UV/LED	2–3 min, 60–90 sec	●●	✓
Cover Rose Gel	nail bed extension gel	nail preparation (dry manicure) + Perfect Prep + Perfect Bond Primer	Bond Gel Vitamine+, Extreme White Gel, Clear Gels, Top Gels	natural pink	✓		●●	●●	✗	M	✓	single	UV, UV/LED	2–3 min, 60–90 sec	●●	✓
Cover Peach Gel	nail bed extension gel	nail preparation (dry manicure) + Perfect Prep + Perfect Bond Primer	Bond Gel Vitamine+, Extreme White Gel, Clear Gels, Top Gels	light peach	✓		●●●	●●	✗	M	✓	multi	UV, UV/LED	2–3 min, 60–90 sec	●●	✓
Cover Tan Gel	highly pigmented nail bed extension gel	nail preparation (dry manicure) + Perfect Prep + Perfect Bond Primer	Bond Gel Vitamine+, Extreme White Gel, Clear Gels, Top Gels	brownish pink	✓		●●	●●	✗	M	✓	single	UV, UV/LED	2–3 min, 60–90 sec	●●	✓
Cover Silver & Gold Shine Gel	nail bed extension & semi-cover gel	nail preparation (dry manicure) + Perfect Prep + Perfect Bond Primer	Clear Gels, Extreme White Gel, Mega White Gel, Top Gels	pearly shine, nude tone	✓		●●●	●●	✓	M	✓	multi	UV, UV/LED	2–3 min, 60–90 sec	●●●●	✓
Cream Pink Gel	builder & nail bed extension gel, also suitable for rose quartz technique	nail preparation (dry manicure) + Perfect Prep + Perfect Bond Primer	Bond Gel Vitamine+, Extreme White Gel, Clear Gels, Top Gels	barbie pink, cream beige	✓		●●	●●	✓	M	✓	single	UV, UV/LED	2–3 min, 60–90 sec	●●	✓
Perfect AcrylGel	the lightness of gel nails combined with the stability of acrylic nails	nail preparation (dry manicure) + Perfect Prep + Perfect Bond Primer	Bond Gel Vitamine+, Top Gels	various tones	varies		●●●●●	●●	✓	XL	✓	single	UV, UV/LED	4–5 min, 12 0 sec	●●●●●	✓

CONSISTENCY

● thin | ●● medium thin | ●●● medium thick | ●●●● thick | ●●●●● very thick

FLEXIBILITY

● rigid | ●● slightly flexible | ●●● medium flexible | ●●●● flexible | ●●●●● highly flexible

HEAT PRODUCTION

● almost none | ●● minimal | ●●● slight | ●●●● medium | ●●●●● high

ALL-IN-ONE

builder lacgels



ELASTIC HARD GEL

■ Clear, self-spreading, brush-applicable base and builder gel with surface filling properties

Thick and strong like a builder gel, yet flexible like a lacgel. Suitable as base gel to strengthen the nails before lacgel application, as well as for nail hardening/correction, nail sculpting and creating an apex. It protects the natural nails from impact and mechanical damage. This gel spreads completely and offers surface filling properties, also ideal for the no-filing technique. Flexible and bendable, but will not deform. It offers high stability and adhesion; requires no primer, and retains shine after cleansing.

HEAT PRODUCTION: slight | **CURE TIME:** UV 2–3 min., UV/LED 30–60 sec.

4 ML PNZ060

15 ML PNZ059

THICKNESS	● ● ● ●
FLEXIBILITY	● ● ●
SOLUBILITY	● ● ● ●



FIBER VITAMINE GEL

■ Milky-white, brush-applicable builder gel with glass fibers and color-enhancing properties

Thick and strong like a builder gel, yet flexible like a lacgel. Use it as a base gel, nail hardening/correction, and as a builder gel for nail extension and creating apex. Protects the natural nails from impact and mechanical damage. The milky white tone highlights and intensifies the color of the lacgel coming on top, and also covers better. Spreads completely, and offers surface filling properties. Flexible and bendable, but will not deform. Offers high stability and adhesion; requires no primer. The fibre glass in the gel provides high stability and a solid base suitable for building longer nails (up to 5 mm). Retains shine after cleansing.

HEAT PRODUCTION: slight | **CURE TIME:** UV 2–3 min., UV/LED 30–60 sec.

15 ML PNZ090

THICKNESS	● ● ● ●
FLEXIBILITY	● ● ●
SOLUBILITY	● ● ● ●



ELASTIC GEL

■ Self-spreading, brush-applicable builder gel with surface filling properties

Suitable as a thin base gel to strengthen the nails before lacgel application, as well as for nail hardening/correction, nail sculpting and creating an apex. Protects the natural nails from impact and mechanical damage. Perfect for nude nails or French nails with a slight extension. This gel spreads completely and offers surface filling properties, also ideal for the no-filing technique. It offers high stability and adhesion; requires no primer, and retains shine after cleansing.

HEAT PRODUCTION: slight | **CURE TIME:** UV 2–3 min., UV/LED 30–60 sec.

THICKNESS	● ● ●
FLEXIBILITY	● ● ●
SOLUBILITY	● ● ● ●



COVER NUDE

15 ML PNZ087



NAIL TECHNICIANS' FAVORITE

COVER PINK

15 ML PNZ088



MILKY PINK

15 ML PNZ093



NAIL TECHNICIANS' FAVORITE

COVER ROSE

15 ML PNZ094



NEW

SILVER SHINE

15 ML PNZ104



NEW

GOLD SHINE

15 ML PNZ105



NAILS:
Évi Darabos – Master Trainer

Baby Boomer Elastic Gel Collection

No more trial and error! We are presenting the only collection you will ever need for a perfect Baby Boomer design! Purchase your favorites in a set and **save 10%** of the single price!

PERFECT TIP: We highly recommend our Ombre brush in order to achieve a perfect blend of colors.



NEW

KIT PNKG035

CONTENT

15 ML Elastic Cover Pink Gel 15 ML Elastic Milky Pink Gel
15 ML Fiber Vitamine Gel



SAVE 10% WHEN PURCHASING A SET

COLOR

lacgels



LacGel Rapid

■ Highly durable and pigmented one-step lacgel colors

A thicker lacgel of creamier texture and a higher pigment concentration, which will provide perfect coverage in as little as one layer. Requires neither a base gel layer nor a top gel layer. Requires cleansing as curing leaves a tacky dispersion layer. The surface cures to shiny; a flexible top gel is recommended as a finishing touch. It can be soaked off with acetone.

CURE TIME: UV 2–3 min., UV/LED 60 sec.

PERFECT TIP: Stir the lacgel with a spatula, or shake the bottle thoroughly before use to ensure an even distribution of pigment.



- 4 ML PNZRM001-19
- 8 ML PNZNYR001-19
- 15 ML PNZR001-19

THICKNESS	● ● ●
FLEXIBILITY	● ● ● ●
SOLUBILITY	● ● ● ● ●



- 4 ML PNZRM001-19
- 8 ML PNZNYR001-19
- 15 ML PNZR001-19



WINTER WONDERLAND LACGEL EFFECT COLLECTION

5X8 ML PNKG030



SAVE 10%
WHEN
PURCHASING
A SET



LacGel

■ Highly durable lacgel colors in three steps

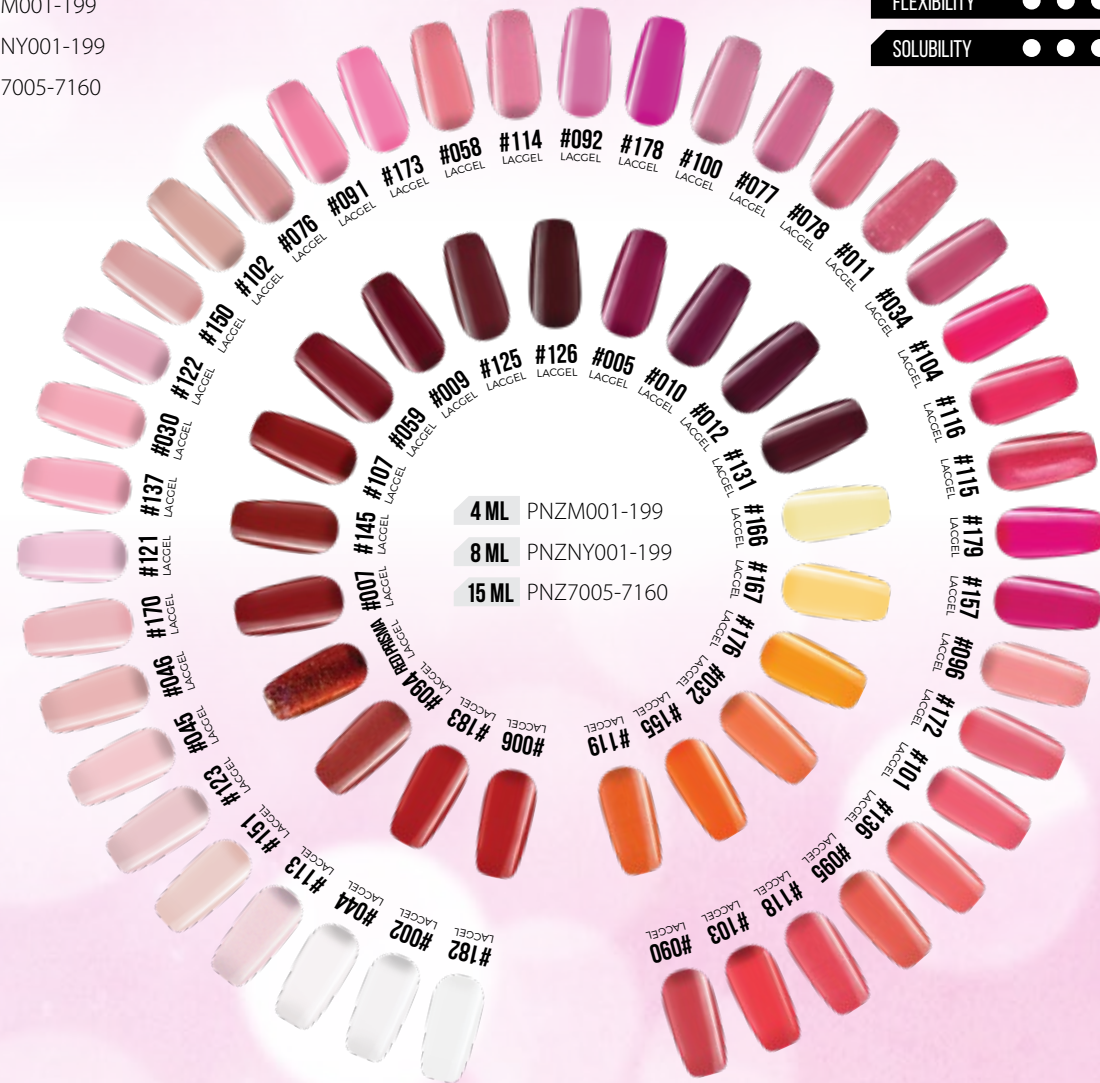
Softly spreading lacgel with excellent adhesion – a transition between color gels and nail polish. No scratching, abrasion and flaking for up to 3 weeks. Requires base and top gel. A flexible top gel is recommended as a finishing touch. It can be soaked off with acetone.

CURE TIME: UV 2–3 min., UV/LED 60 sec.

PERFECT TIP: Stir the lacgel with a spatula, or shake the bottle thoroughly before use to ensure an even distribution of pigment.

THICKNESS	● ●
FLEXIBILITY	● ● ● ●
SOLUBILITY	● ● ● ● ●

- 4 ML PNZM001-199
- 8 ML PNZNY001-199
- 15 ML PNZ7005-7160



- 4 ML PNZM001-199
- 8 ML PNZNY001-199
- 15 ML PNZ7005-7160

UP TO
150 COLORS



- 4 ML PNZM001-199
- 8 ML PNZNY001-199
- 15 ML PNZ7005-7160

FEATURED
FASHION
COLORS



LacGel Plus

■ Highly pigmented lacgel colors in three steps

A thicker lacgel of creamier texture and a higher pigment concentration, which will provide perfect coverage in as little as one layer. It spreads more readily and cures to shinier than traditional lacgels. Requires base and top gel. The surface cures to slightly shiny; a flexible top gel is recommended as a finishing touch. It can be soaked off with acetone.

CURE TIME: UV 2–3 min., UV/LED 60 sec.

PERFECT TIP: Stir the lacgel with a spatula, or shake the bottle thoroughly before use to ensure an even distribution of pigment.

THICKNESS	● ● ●
FLEXIBILITY	● ● ● ●
SOLUBILITY	● ● ● ● ●

- 4 ML PNZMP01-127
- 8 ML PNZNY8001-8127
- 15 ML PNZ8001-8098



- 4 ML PNZMP01-127
- 8 ML PNZNY8001-8127
- 15 ML PNZ8001-8098



- 4 ML PNZMP01-127
- 8 ML PNZNY8001-8127
- 15 ML PNZ8001-8098



BEST OF MAKEUP LACGEL PLUS COLLECTION

5X8 ML PNKG032



SAVE 10%
WHEN
PURCHASING
A SET



LIPSTICK LACGEL COLLECTION

5X8 ML PNKG033



SAVE 10%
WHEN
PURCHASING
A SET

UP TO
100 COLORS



LacGel Plus

■ Highly pigmented lacgel colors in three steps

A thicker lacgel of creamier texture and a higher pigment concentration, which will provide perfect coverage in as little as one layer. It spreads more readily and cures to shinier than traditional lacgels. Requires base and top gel. The surface cures to slightly shiny; a flexible top gel is recommended as a finishing touch. It can be soaked off with acetone.

CURE TIME: UV 2–3 min., UV/LED 60 sec.

PERFECT TIP: Stir the lacgel with a spatula, or shake the bottle thoroughly before use to ensure an even distribution of pigment.



THICKNESS	● ● ●
FLEXIBILITY	● ● ● ●
SOLUBILITY	● ● ● ● ●

- 4 ML PNZMP01-127
- 8 ML PNZNY8001-8127
- 15 ML PNZ8001-8098



- 4 ML PNZMP01-127
- 8 ML PNZNY8001-8127
- 15 ML PNZ8001-8098



PUNCH & LOVE LACGEL PLUS COLLECTION

5X8 ML PNKG017

LacGel Glass



■ Transparent, colored glass effect lacgel colors in three steps

Soft-spreading, transparent lacgel for achieving a colored glass effect. This lacgel is a transition between color gels and nail polish, and provides perfect adhesion. No scratching, abrasion or flaking for up to 3 weeks. It requires base and top gels and cures to moderately shiny, with a flexible top gel recommended as a finishing touch. It can be soaked off with acetone.

CURE TIME: UV 2–3 min., UV/LED 60 sec.

PERFECT TIP: Stir the lacgel with a spatula, or shake the bottle thoroughly before use to ensure an even distribution of pigment.



- 4 ML PNZMG001-05
- 8 ML PNZNYG001-05

THICKNESS	● ●
FLEXIBILITY	● ● ● ●
SOLUBILITY	● ● ● ● ●



NAILS: Évi Darabos – Master Trainer



VITRAGE LACGEL GLASS COLLECTION

5X8 ML PNKG027



LacGel Effect

NEW

■ Lacgel with glitter and other particles in three steps

Use as standalone lacgel or apply as second layer on any lacgel color. It requires base and top gels and cures to moderately shiny, with a flexible top gel recommended as a finishing touch. It can be soaked off with acetone.

CURE TIME: UV 2–3 min., UV/LED 60 sec.

PERFECT TIP: Stir the lacgel with a spatula, or shake the bottle thoroughly before use to ensure an even distribution of glitter particles.



- 4 ML PNZME001-15
- 8 ML PNZNYE001-15

THICKNESS	● ● ●
FLEXIBILITY	● ● ● ●
SOLUBILITY	● ● ● ● ●



- 4 ML PNZME001-15
- 8 ML PNZNYE001-15

NEW

SAVE 10%
WHEN
PURCHASING
A SET



CASHMERE LACGEL EFFECT COLLECTION

5X8 ML PNKG031

LacGel Cat Eye

■ Magnetizable lacgel colors with cat's eye prismatic effect

For the cat eye effect hold a magnet over the painted surface for a few seconds; start curing when the desired prismatic effect occurs. Without magnetizing, this product serves as regular lacgel. Requires base and top gel. A flexible top gel is recommended as a finishing touch. It can be soaked off with acetone.

CURE TIME: UV 1–2 min., UV/LED 60 sec.

PERFECT TIP: Stir the lacgel with a spatula, or shake the bottle thoroughly before use, for a consistent pigment concentration throughout. Please use a black base before applying 9D Cat Eye lacgels.



- 4 ML PNZMC001-20
- 8 ML PNZNY9001-20

THICKNESS	● ● ●
FLEXIBILITY	● ● ● ●
SOLUBILITY	● ● ● ● ●



- 4 ML PNZMC001-20
- 8 ML PNZNY9001-20

SEE
MAGNETS
ON PAGE
168



NEW

SAVE 10%
WHEN
PURCHASING
A SET



9D LACGEL CAT EYE COLLECTION

5X8 ML PNKG036

COLOR LACGELS – COMPARISON TABLE

WHAT TO USE TOGETHER AND HOW

PRODUCT NAME	PRODUCT FEATURES	USE	BASE GEL COMBINATION	TOP GEL COMBINATION	DURABILITY	CONSISTENCY		APPLICATION / LEVEL OF COVERAGE	FLEXIBILITY	CURE TYPE	CURE TIME	SURFACE WHEN CURED, STICKINESS	CLEANSING	CLEANSED SURFACE	TOP GEL	SOLUBILITY	SOAK-OFF TIME
LacGel	three-step lacgel	nail preparation (dry manicure) + Perfect Prep + base gel + color + top gel	Bond Gel Vitamine+, Hardener Gel, Elastic Gel, Fiber Vitamin Gel, LacGel Base/Top	Cool Shine Ever Top Gel, No Cleanse Top Shield, Extreme Gloss Gel, Velvet Matt Extra Gel, Flexi Top Gloss, LacGel Base/Top	3–4 weeks	●●		two normal layers	●●●●	UV, UV/LED	2–3 min., 60 sec.	✓	✗	●	✓	●●●●●	file off top layer + 10–20 min.
LacGel Plus	thicker and more pigmented three-step lacgel	nail preparation (dry manicure) + Perfect Prep + base gel + color + top gel	Bond Gel Vitamine+, Hardener Gel, Elastic Gel, Fiber Vitamin Gel, LacGel Base/Top	Cool Shine Ever Top Gel, No Cleanse Top Shield, Extreme Gloss Gel, Velvet Matt Extra Gel, Flexi Top Gloss, LacGel Base/Top	3–4 weeks	●●●		one - two normal layers	●●●●	UV, UV/LED	2–3 min., 60 sec.	✓	✗	●●	✓	●●●●●	file off top layer + 10–20 min.
LacGel Rapid	requires cleansing single-step lacgel	nail preparation (dry manicure) + Perfect Prep + base gel + color + cleansing	Bond Gel Vitamine+, Hardener Gel, Elastic Gel, Fiber Vitamin Gel, LacGel Base/Top	Cool Shine Ever Top Gel, No Cleanse Top Shield, Extreme Gloss Gel, Velvet Matt Extra Gel, Flexi Top Gloss, LacGel Base/Top	2–3 weeks	●●●		one - two normal layers	●●●●	UV, UV/LED	2–3 min., 60 sec.	✓	✓	●●●	✗	●●●●●	file off top layer + 10–20 min.
LacGel Glass	transparent, three-step lacgel with a colored glass effect	nail preparation (dry manicure) + Perfect Prep + base gel + color + top gel	Bond Gel Vitamine+, Hardener Gel, Elastic Gel, Fiber Vitamin Gel, LacGel Base/Top	Cool Shine Ever Top Gel, No Cleanse Top Shield, Extreme Gloss Gel, Velvet Matt Extra Gel, Flexi Top Gloss, LacGel Base/Top	3–4 weeks	●●		one - two normal layers	●●●●	UV, UV/LED	2–3 min., 60 sec.	✓	✗	●●●	✓	●●●●●	file off top layer + 10–20 min.
LacGel Effect	three-step lacgel with glitter, velvet fibers and other particles	nail preparation (dry manicure) + Perfect Prep + base gel + color + top gel	Bond Gel Vitamine+, Hardener Gel, Elastic Gel, Fiber Vitamin Gel, LacGel Base/Top	Cool Shine Ever Top Gel, No Cleanse Top Shield, Extreme Gloss Gel, Velvet Matt Extra Gel, Flexi Top Gloss, LacGel Base/Top	3–4 weeks	●●●		one - two normal layers	●●●●	UV, UV/LED	2–3 min., 60 sec.	✓	✗	●●●	✓	●●●●●	file off top layer + 10–20 min.
LacGel Cat Eye	magnetic, three-step lacgel with a cateye effect	nail preparation (dry manicure) + Perfect Prep + base gel + color + top gel	Bond Gel Vitamine+, Hardener Gel, Elastic Gel, Fiber Vitamin Gel, LacGel Base/Top	Cool Shine Ever Top Gel, No Cleanse Top Shield, Extreme Gloss Gel, Velvet Matt Extra Gel, Flexi Top Gloss, LacGel Base/Top	3–4 weeks	●●●		two normal layers	●●●●	UV, UV/LED	2–3 min., 60 sec.	✓	✗	●	✓	●●●●●	file off top layer + 10–20 min.

CONSISTENCY

● thin | ●● medium thin | ●●● medium thick | ●●●● thick | ●●●●● very thick

FLEXIBILITY

● rigid | ●● slightly flexible | ●●● medium flexible | ●●●● flexible | ●●●●● highly flexible

CLEANSED SURFACE

● matte | ●● slight gloss | ●●● medium gloss | ●●●● high gloss | ●●●●● brilliant gloss

SOLUBILITY

● non-soluble | ●● low solubility | ●●● medium solubility | ●●●● soluble | ●●●●● good solubility

LACGEL

starter kits



For lacgel application

■ Recommended for trainees or as a trial set for Perfect Nails products

These kits are ideal for manicure and lacgel application. A complimentary technical card is included for reference to ensure the correct order of product application.

NEW



MINI KIT

■ For lacgel application

4 ML Perfect Prep **4 ML** LacGel Base/Top **20 ML** Gel Cleaner **4 ML** LacGel #007
1 PC Orange Wood Stick **1 PC** White Buffer **100 PCS** Premium Nail Wipes

MINI

PNKG041



MINI MOUSE KIT

■ For lacgel application with a UV/LED lamp (containing 6 LEDs)

4 ML Perfect Prep **4 ML** LacGel Base/Top **20 ML** Gel Cleaner **4 ML** LacGel #007
1 PC Orange Wood Stick **1 PC** White Buffer **100 PCS** Premium Nail Wipes
1 PC Mouse Gelpolish UV/LED Lamp

MINI MOUSE

PNKG048



PRO KIT

■ For lacgel application with a UV/LED lamp (containing 21 LEDs)

4 ML Perfect Prep **4 ML** LacGel Base/Top **20 ML** Gel Cleaner **4 ML** LacGel #007
1 PC Orange Wood Stick **1 PC** White Buffer **100 PCS** Premium Nail Wipes
1 PC Smart Universal UV/LED Lamp

PRO

PNKG043



UNICORN PRO KIT

■ For lacgel application with a UV/LED lamp (containing 30 LEDs)

4 ML Perfect Prep **4 ML** LacGel Base/Top **20 ML** Gel Cleaner **4 ML** LacGel #007
1 PC Orange Wood Stick **1 PC** White Buffer **100 PCS** Premium Nail Wipes
1 PC Unicorn Pink UV/LED lamp

UNICORN PRO

PNKG045



For lacgel application

LacGel starter kits

For nail-strengthening & lacgel application

■ Recommended for trainees or as a trial set for Perfect Nails products

These kits are ideal for manicure and strengthening the nails with Elastic Hard Gel before lacgel application. A complimentary technical card is included for reference to ensure the correct order of product application.

NEW



MAXI KIT

■ For nail-strengthening and lacgel application

- 4 ML Perfect Prep 4 ML LacGel Base/Top 20 ML Gel Cleaner 4 ML LacGel #007
- 4 ML LacGel #151 4 ML Cuticle Softener 4 ML Elastic Hard Gel 1 PC White Buffer
- 1 PC Orange Wood Stick 1 PC Pusher & Scraper - Flat 100 PCS Premium Nail Wipes

MAXI PNKG042



SAVE 8% WHEN PURCHASING A SET

MAXI MOUSE KIT

■ For nail-strengthening and lacgel application with a UV/LED lamp (containing 6 LEDs)

- 4 ML Perfect Prep 4 ML LacGel Base/Top 20 ML Gel Cleaner 4 ML LacGel #007
- 4 ML LacGel #151 4 ML Cuticle Softener 4 ML Elastic Hard Gel 1 PC White Buffer
- 1 PC Orange Wood Stick 1 PC Pusher & Scraper - Flat 100 PCS Premium Nail Wipes
- 1 PC Mouse Gelpolish UV/LED Lamp

MAXI MOUSE PNKG049



PRO PLUS KIT

■ For nail-strengthening and lacgel application with a UV/LED lamp (containing 21 LEDs)

- 4 ML Perfect Prep 4 ML LacGel Base/Top 20 ML Gel Cleaner 4 ML LacGel #007
- 4 ML LacGel #151 4 ML Cuticle Softener 4 ML Elastic Hard Gel 1 PC White Buffer
- 1 PC LacGel Waterproof Nail File - Fine/Medium 1 PC Orange Wood Stick
- 1 PC Pusher & Scraper - Flat 100 PCS Premium Nail Wipes
- 1 PC Smart Universal UV/LED Lamp

PRO PLUS PNKG044

UNICORN PRO PLUS KIT

■ For nail-strengthening and lacgel application with a UV/LED lamp (containing 30 LEDs)

- 4 ML Perfect Prep 4 ML LacGel Base/Top 20 ML Gel Cleaner 4 ML LacGel #007
- 4 ML LacGel #151 4 ML Cuticle Softener 4 ML Elastic Hard Gel 1 PC White Buffer
- 1 PC LacGel Waterproof Nail File - Fine/Medium 1 PC Orange Wood Stick
- 1 PC Pusher & Scraper - Flat 100 PCS Premium Nail Wipes
- 1 PC Unicorn Silver UV/LED Lamp

UNICORN PRO PLUS PNKG046



SAVE 15% WHEN PURCHASING A SET

MEGA PACK KIT

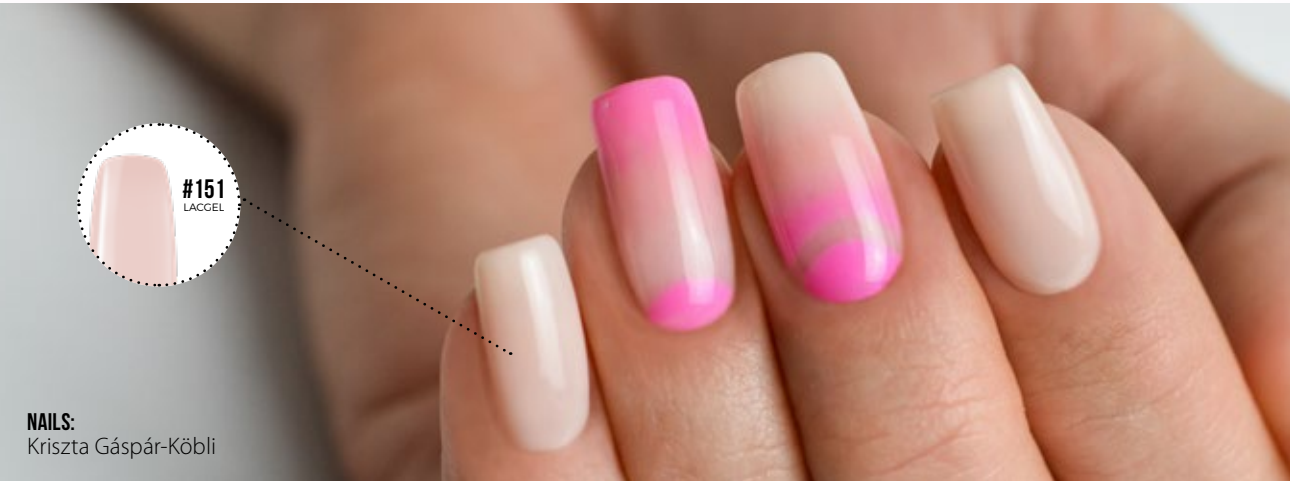
■ For nail-strengthening and lacgel application with a UV/LED lamp (containing 36 LEDs)

- 4 ML Perfect Prep 4 ML LacGel Base/Top 20 ML Gel Cleaner 4 ML LacGel #007
- 4 ML LacGel #151 4 ML Cuticle Softener 4 ML Elastic Hard Gel 1 PC White Buffer
- 1 PC LacGel Waterproof Nail File - Fine/Medium 1 PC Orange Wood Stick
- 1 PC Pusher & Scraper - Flat 100 PCS Premium Nail Wipes
- 1 PC Moonlight Plus Universal UV/LED Lamp

MEGA PACK PNKG047



SAVE 5% WHEN PURCHASING A SET



NAILS:
Kriszta Gáspár-Köbli



GLUE GEL

■ Thick consistency gel with adhesive effect

As opposed to traditional adhesives, this product contains no cyanoacrylates and leaves no foggy residue on nail art pieces, so these retain their original beauty. The elements of the design are movable until the nails get under the lamp. Rhinestones and crystals are securely and reliably enclosed, so even lower quality stones are less likely to fall off. The slightest amount of UV light initiates polymerization, making this product highly suitable for securing larger nail art elements or clusters. Given the product's flexibility, it is durable on nails coated with lacquer as well. Can be filed or soaked off.

CURE TIME: UV 2–3 min., UV/LED 60 sec.

15 ML PNZ076

THICKNESS	● ● ● ●
FLEXIBILITY	● ● ● ●
SOLUBILITY	● ● ● ●



SPEED ART LINE

■ Highly pigmented, no-cleanser color gel with a thin applicator brush

This highly pigmented, no-cleanser nail art gel has a special brush applicator to allow the most precise application and for drawing extremely thin lines. Before surface application, the nails should be cleansed and provided with a flexible top gel. It cures to shiny, so it requires no top-coating. However, if you wish to apply a top gel, do not allow the product to cure completely to ensure the proper adhesion of the top gel.

PERFECT TIP: You might want to flash cure your design after the painting of each pattern detail.

CURE TIME: UV 1 min. UV/LED 30 sec.

THICKNESS	●
FLEXIBILITY	● ● ● ●



8 ML PNSA02



8 ML PNSA03



8 ML PNSA04



WATERWAY CLEAR GEL

Flexible, transparent base gel for the Waterway technique

A flexible, transparent base gel applicable over any cured – shiny or matte – surface as well as on colored lacgels, as it won't cause any discoloration. Suitable for the bubble technique, and also for inverted nail art. Requires cleansing as curing leaves a tacky dispersion layer. A flexible top gel is recommended as a finishing touch.

CURE TIME: UV 1 min., UV/LED 30 sec.

PLEASE NOTE: You may not want to combine this product with lacgels of thicker consistency, as those can't spread on the Waterway Clear Gel well enough.

8 ML PNZ089

THICKNESS	● ● ● ●
FLEXIBILITY	● ● ● ●
SOLUBILITY	● ● ● ●



TIPS:
Hajnalka Wastl

WATERWAY COLOR GEL

Highly pigmented, no-cleanser color gels for the Waterway technique

Highly pigmented, colored gels for the Waterway technique. Use Waterway Base Gel for “wet-on-wet” or “waterway floating” patterns. The slight flexibility only allows this product to be on used rigid or reinforced base nails – e.g. hard gel and acrylic nail enhancements and nails reinforced using Elastic Hard Gel or Fiber Vitamine Gel. No cleansing, shiny surface after curing. A flexible top gel is recommended as a finishing touch.

CURE TIME: UV 2–3 min., UV/LED 90 sec.

PLEASE NOTE: Waterway Color Gels will not spread on sticky layers.

5 G PNZ3001-04

THICKNESS	● ●
FLEXIBILITY	● ●
SOLUBILITY	● ● ●



SPIDER GEL

Stretchable, no-cleanser gels with high pigment content

Elastic and flexible, no-cleanser color gel with high pigment content for creating a cobweb-like pattern with the finest threads. Suitable for use on matte surfaces; you can also use a dotting tool pen or a nail art brush to create the desired pattern on cured flexible, no-cleanser shine gel. Cures to shiny, requires neither cleansing nor top gel.

CURE TIME: UV 4 min., UV/LED 3 min. (min. 36W lamps)



THICKNESS	● ● ● ● ●
FLEXIBILITY	● ● ● ●
SOLUBILITY	●



FLEXIBLE,
STRETCHABLE



Delux Gel

■ Highly pigmented, no-cleanse color gels, providing great coverage in one layer

A medium thick, no-cleanse color gel with high pigment content; provides excellent coverage in one layer. Cures to shiny, requires no top gel. Highly suitable for the one-move technique, surface nail art and creating colored French edge. Don't allow it to cure completely if you want to apply a top layer, to allow proper adhesion for the top gel. The colors will mix well.

CURE TIME: UV 2–3 min., UV/LED 90 sec.

56 PNZ2001-61

THICKNESS	● ● ●
FLEXIBILITY	● ●
SOLUBILITY	●

OVER
50 COLORS



56 PNZ2001-61

Cream Gel

■ Thick, no-cleanse cream gel for nail art

A thick decor cream gel requiring no cleansing, suitable for surface nail art. Suitable for use on matte surfaces; you can also use this product to paint the desired pattern on half-cured no-cleanse, flexible shine gel. For multiple layers, cure each layer separately half way. Cures to shiny, requires neither cleansing nor top gel.

CURE TIME: UV 3 minutes, UV/LED 60 seconds

PERFECT TIP: This gel is more rigid, so it is only suitable for surface designs on smaller areas.

56 PNP06-18



FAVORITE OF
ÉVI DARABOS

THICKNESS	● ● ● ●
FLEXIBILITY	● ●
SOLUBILITY	●



56 PNP06-18



NAILS:
Évi Darabos – Master Trainer



Color Gel

■ Medium thick color gel with high pigment content

Requires base and top gels. Highly suitable for surface nail art – even on the entire surface – and creating colored French edge. The colors mix well. Requires no cleansing; flexible top gel is recommended as a finishing touch.

CURE TIME: UV 2–3 min., UV/LED 1 min.

5G PNZ5005-228

THICKNESS	● ● ●
FLEXIBILITY	● ●
SOLUBILITY	●

OVER
90 COLORS



5G PNZ5005-228



5G PNZ5005-228



5G PNZ5005-228



FOR 3D DECORATIONS

PLASTILINE GEL

Very thick, putty-like gel

Any desired tone can be achieved by mixing the base colors. The high thickness provides firm adhesion to the nail surface. The silicone tip Art & Corrector Pen allows for the easy shaping of even the most intricate details. Add Delux Gel to soften the product. Use the blobs you took out from the jar to create any 3D shapes, even on a silicone sheet. A pro tip: reseal the adhesive tape on the jar after use to prevent the material from drying out. No cleansing and no top gel required.

CURE TIME: UV 2–3 min., UV/LED 60 sec.

5G PNP001-04

THICKNESS	● ● ● ● ● ●
FLEXIBILITY	● ●
SOLUBILITY	●



5G PNP002



5G PNP003



5G PNP004



5G PNP005



FOR LIQUID STONE TECHNIQUE

LIQUID STONE CLEAR GEL

Medium thick, transparent liquid stone gel

Use it to create 3D nail art designs with liquid stone technique or cover the entire nail surface for a glittery-holo effect. You can add any kind of pigment, glitter, chrome powder, confetti or any other nail art material. Use a greater amount of the product on any nail art material for a “magnifying glass” effect.

CURE TIME: UV 2 min., UV/LED 60 sec.

PERFECT TIP: Use Liquid Stone Frames to enclose the customized Liquid Stone Gel compositions. To make sure that the material gets fully cured, liquid stones thicker than 1 mm should be created in several steps.

5G PNZ080

THICKNESS	● ● ●
FLEXIBILITY	● ● ●
SOLUBILITY	●

LIQUID STONE COLOR GEL

Medium thick, multicolor nail art gel with a holographic effect

Use it to create 3D nail art designs with liquid stone technique or cover the entire nail surface for a glittery-holo effect.

CURE TIME: UV 2 min., UV/LED 60 sec.

PERFECT TIP: Use Liquid Stone Frames to enclose the customized Liquid Stone Gel compositions. To make sure that the material gets fully cured, liquid stones thicker than 1 mm should be created in several steps.



FOR LIQUID STONE TECHNIQUE

THICKNESS	● ● ●
FLEXIBILITY	● ● ●
SOLUBILITY	●



PNZ081



PNZ082



PNZ083



PNZ091



PNZ092

LIQUID STONE FRAMES

Miniature metallic frames for the liquid stone technique

Apply a small amount of Glue Gel on the nail, then position the chosen frame so that the Glue Gel surrounds the frame on all sides. Cure for 5-10 seconds. Starting from the middle, fill the frame with Liquid Stone Gel and cure it, then apply a flexible top gel onto the nail surface and the liquid stone gel (e.g. Cool Shine Ever Gel).

PERFECT TIP: Do not apply the top gel onto the top surface of the frame itself.



PNDMD02



PNDMD03



PNDMD04

PERFECT

AcrylGel



Perfect AcrylGel

■ The lightness of gel nails combined with the sturdiness of acrylic nails

Extremely thick, yet easy to shape as long as needed. This product combines the benefits of gel and acrylic builder materials: applicable in a few steps, stays put, easy to file, and cures in both UV and UV/LED lamps. AcrylGel provides excellent adhesion, and it only requires a liquid primer as base. It is ideal for quick and efficient salon work, being equally suitable for hardening the natural nail and sculpting extensions both with nail forms and tips.

PERFECT TIP: Dip the brush in Perfect AcrylGel Solution if the AcrylGel starts sticking to the bristles. Please note: Avoid overusing it as it may overthin the AcrylGel which may lead to the AcrylGel peeling off the nail. Use an Art & Corrector Pen silicone tool to avoid accidentally moving the nail form and to minimize waste. Without applying excessive pressure, simply roll the AcrylGel onto the nail plate for shaping.

PHASE: single-phase | **HEAT PRODUCTION:** high | **CURE TIME:** UV 4–5 min., UV/LED 2 min.



ACRYLIC

powders

Standard speed acrylic powders

■ For both beginners and experienced nail technicians

Standard speed acrylic powders of extra fine grain size. They provide maximal adhesion and a creamy texture. Remarkable bendability due to the flexible nature of the products. Drying time is influenced by the chosen liquid.

CLEAR POWDER

■ Transparent acrylic builder powder

Perfectly highlights the base colors. Excellent in combination with nail art color gels (Delux gel, Cream gel), for uses such as Sugar Effect technique or the matting of lacgels.

5 ML PNP0000
50 ML PNP0006

15 ML PNP0001
140 G PNP0007

30 ML PNP0002



SALON CLEAR POWDER

■ Crystal clear, transparent acrylic builder powder

In comparison with the Clear powder, it is even more transparent, crystal clear and more finely milled.

5 ML PNP0079

15 ML PNP0080

50 ML PNP0085



WHITE POWDER

■ White acrylic builder powder

Its slower drying time makes it ideal for creating smile lines by wiping with a brush.

5 ML PNP0010

15 ML PNP0011

30 ML PNP0012





WHITE BOOMER POWDER

■ Slightly transparent, milky white acrylic powder

Slightly clear for creating the perfect gradient. Ideal for the Baby Boomer technique.

15 ML PNP0060

30 ML PNP0061

50 ML PNP0062



PINK POWDER

■ Clear, light pink acrylic builder powder

Perfectly highlights the color of the nail bed. Suitable for French nails without nail bed extension and changing the tone of the nail bed extension powder.

5 ML PNP0025

15 ML PNP0021

30 ML PNP0022



NAILS:
Évi Darabos – Master Trainer

GLASS ROSE POWDER

■ Transparent, rose acrylic builder powder

Rose acrylic builder powder with a glassy transparent effect recommended for creating glass-like free edges and decorations of unique color effects. Non-yellowing, thus provides clear and long lasting colors.

15 ML PNP0043



GLASS PINK POWDER

■ Transparent, pinkish acrylic builder powder

Pinkish acrylic builder powder with a glassy transparent effect recommended for creating glass-like free edges and decorations of unique color effects. Non-yellowing, thus provides clear and long lasting colors.

15 ML PNP0044



COVER BOOMER POWDER

■ Slightly clear, peachy pink acrylic powder

The natural tone fits any skin tone well. Slightly clear for creating the perfect gradient; ideal choice for Baby Boomer technique and even total coverage. Ideal for French nail infills.

15 ML PNP0057

30 ML PNP0058

50 ML PNP0059





PINK MASQUE POWDER

■ Acrylic nail extension powder of natural nude tone

Matches a variety of skin tones. Suitable for covering up any imperfections of the nail bed, and allows seamless infills. The strong pigmentation ensures reliable coverage for nail surface imperfections and the free edge.

- 5 ML PNP0005
- 15 ML PNP0003
- 30 ML PNP0004
- 50 ML PNP0045
- 140 G PNP0052



HALF MASQUE POWDER

■ Semi-cover nail bed extension acrylic powder

Its tone is in perfect harmony with that of the Pink Masque powder. Slightly clear, semi coverage acrylic powder for nail bed extensions. Suitable by itself for creating short French nails, or it can ensure a perfect gradient when sculpting extreme length nail enhancements.

- 5 ML PNP0028
- 15 ML PNP0046



SALON COVER PINK POWDER

■ Acrylic nail bed extension powder with a cool purple tone

Extra finely milled, nail bed extension acrylic powder with a cool purple undertone. Highly pigmented, ensuring a long lasting color.

- 5 ML PNP0081
- 15 ML PNP0082
- 50 ML PNP0086

PEACH MASQUE POWDER

■ Acrylic nail bed extension powder of peachy tone

This powder has a beautiful, highly pigmented, peachy tone and provides spotless and perfectly consistent coverage.

- 5 ML PNP0053
- 15 ML PNP0054
- 140 G PNP0087



SILVER SHINE MASQUE POWDER

■ Acrylic nail bed extension powder of pearly silver tone

Acrylic nail bed extension powder of pearly silver tone providing excellent coverage.

- 5 ML PNP0055
- 15 ML PNP0050



GOLD SHINE MASQUE POWDER

■ Acrylic nail bed extension powder of pearly gold tone

Acrylic nail bed extension powder of gold tone providing excellent coverage.

- 5 ML PNP0056
- 15 ML PNP0051



High speed acrylic powders

■ For experienced nail technicians and competitors

Finely milled acrylic powders with faster drying time. They have a creamy texture and provide maximum adhesion. These products are flexible, ensuring remarkable bendability. Can be used with both standard and high speed liquids.

PERFECT TIP: In colder ambient temperatures, nail technicians of all skill levels can benefit from the properties of these products.



SPEED CLEAR POWDER

■ Crystal clear acrylic builder powder

Builder powder with the same characteristics as the Clear powder, but a roughly one and a half times quicker drying time. Besides offering excellent color retention, this product allows for easy sculpting and consistent application.

- 5 ML PNP0026
- 15 ML PNP0013
- 50 ML PNP0014
- 140 G PNP0047



BRILLIANT
WHITE

SPEED EXTRA WHITE POWDER

■ Brilliant white acrylic builder powder

The product's bluish white undertones ensure a dazzling white color. Besides offering excellent color retention, this product allows for easy sculpting and consistent application.

- 5 ML PNP0027
- 15 ML PNP0019
- 50 ML PNP0020
- 140 G PNP0049

SPEED PINK POWDER

■ Light pink acrylic builder powder

Perfectly highlights the color of the nail bed. Suitable for French nails without nail bed extension and changing the tone of the nail bed extension powder.

- 5 ML PNP0029
- 15 ML PNP0015
- 50 ML PNP0016
- 140 G PNP0048



SPEED DARK PINK POWDER

■ Acrylic builder powder of darker pink tone

Provides a beautiful contrast to the white free edge of nails with no nail bed extension. Perfect for building the nail bed structure for extreme shapes.

- 5 ML PNP0031
- 15 ML PNP0017
- 50 ML PNP0018



NAILS:
Évi Darabos – Master Trainer

COLOR

acrylic powders



Color Acrylic Powder

■ Highly pigmented, finely milled acrylic powders offering excellent coverage

Compared to builder powders, these finely milled color powders require more liquid. After picking up a bead of powders containing color pigments and glitter, the brush should always be gently patted on a dry paper towel to achieve the desired color effect and consistency. Use this product on a thin, transparent base, or apply it directly on the nail form, and clear cap it. Medium drying time, suitable for use with slower and higher speed liquids as well.

5 ML PNPC004-176



UP TO
50 COLORS



5 ML PNPC004-176

GEL AND

acrylic kits



Luxury Kit Gel Collections

■ Gel kit for trainees or as a trial set for Perfect Nails products



LUXURY GEL KIT PLATINUM

■ Medium thick gels for building size M nails

- 15 G Platinum Gel
- 15 G Extreme White Gel
- 15 G Cover Gel
- 100 ML Gel Cleaner
- 15 ML Top Gel
- 15 ML Perfect Prep
- 15 ML Perfect Bond Primer

PLATINUM PNKG008



LUXURY GEL KIT ICE

■ Thick gels for building size L-XL nails

- 15 G Ice Gel
- 15 G Extreme White Gel
- 15 G Cover Gel
- 100 ML Gel Cleaner
- 15 ML Top Gel
- 15 ML Perfect Prep
- 15 ML Perfect Bond Primer

ICE PNKG009



LUXURY GEL KIT CRYSTAL

■ Thick gels for building size L nails

- 15 G Crystal Clear Gel
- 15 G Extreme White Gel
- 15 G Cover Gel
- 100 ML Gel Cleaner
- 15 ML Top Gel
- 15 ML Perfect Prep
- 15 ML Perfect Bond Primer

CRYSTAL PNKG010



LUXURY GEL KIT PREMIUM

■ Extra flexible gels for building size XS nails

- 15 G Premium Gel
- 15 G Extreme White Gel
- 15 G Cover Gel
- 100 ML Gel Cleaner
- 15 ML Top Gel
- 15 ML Perfect Prep
- 15 ML Perfect Bond Primer

PREMIUM PNKG011



Luxury Kit Acrylic Collections

■ Acrylic kit for trainees or as a trial set for Perfect Nails products

SAVE 16%
WHEN
PURCHASING
A SET



LUXURY ACRYLIC KIT COVER TRADITIONAL

■ Recommended for French nails with nail extension

Standard acrylic powders with standard speed liquid.

15 ML Clear Powder 15 ML White Powder 15 ML Pink Masque Powder
100 ML Liquid 30 ML Brush Cleaner 30 ML Perfect Prep 15 ML Perfect Bond Primer

COVER TRADITIONAL

PNKP011



LUXURY ACRYLIC KIT COVER TRADITIONAL X

■ Recommended for French nails with nail extension

Standard acrylic powders with high speed liquid.

15 ML Clear Powder 15 ML White Powder 15 ML Pink Masque Powder
100 ML Intensive Liquid 30 ML Brush Cleaner 30 ML Perfect Prep 15 ML Perfect Bond Primer

COVER TRADITIONAL X

PNKP012



LUXURY ACRYLIC KIT FRENCH TRADITIONAL

■ Recommended for traditional French nails

Standard acrylic powders with standard speed liquid

15 ML Clear Powder 15 ML White Powder 15 ML Pink Powder
100 ML Liquid 30 ML Brush Cleaner 30 ML Perfect Prep 15 ML Perfect Bond Primer

FRENCH TRADITIONAL

PNKP013



LUXURY ACRYLIC KIT FRENCH TRADITIONAL X

■ Recommended for traditional French nails

Standard acrylic powders with high speed liquid.

15 ML Clear Powder 15 ML White Powder 15 ML Pink Powder
100 ML Intensive Liquid 30 ML Brush Cleaner 30 ML Perfect Prep 15 ML Perfect Bond Primer

FRENCH TRADITIONAL X

PNKP014

LUXURY ACRYLIC KIT COVER SPEED

■ Recommended for French nails with nail extension

Acrylic powders from the speed range with standard speed liquid.

15 ML Speed Clear Powder 15 ML Speed Extra White Powder 15 ML Pink Masque Powder
100 ML Liquid 30 ML Brush Cleaner 30 ML Perfect Prep 15 ML Perfect Bond Primer

COVER SPEED

PNKP015



GREECE'S
FAVORITE

LUXURY ACRYLIC KIT COVER SPEED X

■ Recommended for French nails with nail extension

Acrylic powders from the speed range with high speed liquid.

15 ML Speed Clear Powder 15 ML Speed Extra White Powder 15 ML Pink Masque Powder
100 ML Intensive Liquid 30 ML Brush Cleaner 30 ML Perfect Prep
15 ML Perfect Bond Primer

COVER SPEED X

PNKP016



LUXURY ACRYLIC KIT FRENCH SPEED

■ Recommended for traditional French nails

Acrylic powders from the speed range with standard speed liquid.

15 ML Speed Clear Powder 15 ML Speed Extra White Powder 15 ML Pink Powder
100 ML Liquid 30 ML Brush Cleaner 30 ML Perfect Prep 15 ML Perfect Bond Primer

FRENCH SPEED

PNKP017



LUXURY ACRYLIC KIT FRENCH SPEED X

■ Recommended for traditional French nails

Acrylic powders from the speed range with high speed liquid.

15 ML Speed Clear Powder 15 ML Speed Extra White Powder 15 ML Pink Powder
100 ML Intensive Liquid 30 ML Brush Cleaner 30 ML Perfect Prep
15 ML Perfect Bond Primer

FRENCH SPEED X

PNKP018





Premium files

Very strong and durable, half moon shaped zebra files that last up to twice as long as traditional files. The foam-covered inner core (a central plastic sheet) guarantees a more flexible and softer filing surface.

PREMIUM #80/80

For removing acrylic nails.

PC PNR0613

PREMIUM #100/100

For removing acrylic/gel/AcrylGel nails and lacgel.

PC PNR0614

PREMIUM #150/150

For filing and shaping acrylic nails.

PC PNR0615

PREMIUM #180/180

For filing and shaping gel nails, and refining acrylics.

PC PNR0616

PREMIUM #100/180

For removing/filing/shaping acrylic/gel/AcrylGel nails.

PC PNR0617

PREMIUM MIX #180/220

A combined file and buffer for the gentle preparation of natural nails, surface finishing and shaping.

PC PNR0618



Supreme Waterproof files

The surface of the Supreme files feature a special “sandpaper-like” coating, and have water-repellent qualities, allowing for sanitization. Any filing residue and dust can be almost completely removed with a wet nail brush. The Supreme Waterproof files last up to 4 times longer than traditional files.

WASHABLE,
SANITIZABLE

WATERPROOF #80/80

For removing acrylic nails.

PC PNR0621

WATERPROOF #100/100

For removing acrylic/gel/AcrylGel nails and lacgel.

PC PNR0622

WATERPROOF #150/150

For filing and shaping acrylic nails.

PC PNR0623

WATERPROOF #180/180

For filing and shaping gel nails, and refining acrylics.

PC PNR0624

WATERPROOF #220/220

For refining acrylic/gel/AcrylGel nail enhancements, and refining the surface of the natural nail.

PC PNR0625

WATERPROOF #150/220

For filing and shaping acrylic nails, as well as refining acrylic/gel/AcrylGel nail enhancements, and refining the surface of the natural nail.

PC PNR0626

WATERPROOF LACGEL FINE/MEDIUM

For refining acrylic/gel/AcrylGel nail enhancements, for filing and shaping gel nails, and refining the surface of the natural nail.

PC PNR0627



BEST-
SELLER

BEST-
SELLER



Shaping, refining

OMBRE WOODEN NAIL FILE #180/220

NEW

For shaping the natural nail and nail enhancements, and for filing the smile line. This slightly curved tool facilitates shaping, since the concave side enables you better access to the nail sides and corners. It is much easier to shape the smile line, to refine the sides and create the endings of the smile line with pinpoint accuracy.

PC PNR0628



PURPLE FOAM, WIDE #80/80

For refining the acrylic nail surface.

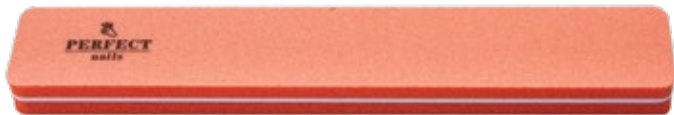
PC PNR0604



ORANGE FOAM, WIDE #100/100

For refining the acrylic/gel/AcrylicGel nail surface and prepping the natural nails.

PC PNR0606



BLUE FOAM, WIDE #180/180

For refining the acrylic/gel/AcrylicGel nail surface.

PC PNR0605



WHITE FOAM CURVED #100/100

For refining the acrylic/gel/AcrylicGel nail surface and prepping the natural nails.

PC PNR0601



RECTANGULAR BLACK #100/180

For refining acrylic/gel/AcrylicGel nail enhancements, for filing, shaping and prepping the natural nail, and for lacgel removal.

PC PNR0301



RECTANGULAR RED MYLAR #80/80

For removing acrylic and gel nails.

PC PNR0304



TEARDROP #80/100

For shaping and refining acrylic/gel/AcrylicGel nail enhancements, for lacgel removal, and for shaping the natural nail. The narrow side enables high precision filing even along the nail walls. The wider side is suitable for filing larger surfaces.

BLACK PC PNR0010



WHITE PC PNR0011



HALFMOON BLACK #100/180

For refining acrylic/gel/AcrylicGel nail enhancements, for filing, shaping and prepping the natural nail, and for lacgel removal. The finer grit side is suitable for shaping and prepping the natural nail, whereas the coarser grit side is recommended for the removal of nail enhancements.

PC PNR305



ROBUST MIX #100/180

For refining acrylic/gel/AcrylicGel nail enhancements, for filing, shaping and prepping the natural nail, and for lacgel removal.

PC PNR0610



PERFECT PRECISION

■ High-wear, stainless steel file

Use it for smile-line filing and the precise filing of the side lines. Washable, sanitizable.

PC PNR701



WASHABLE,
SANITIZABLE

BUFFER BLOCK

■ 4-sided buffer block

Use it to remove surface shine from natural nails, and to refine the surface of nail extensions.

WHITE #150/150

PC PNRB001

PINK #150/150

PC PNRB002

OMBRE #180/180

PC PNRB026

PURPLE #120/120

PC PNRB027



NEW

THREE-WAY BUFFER BLOCK #100/180/180

■ 3-sided buffer block

Use it to remove acrylic/gel/AcrylGel and lacgel residue.
CAUTION! Do not use on the natural nail to remove surface shine.

PURPLE #60/100/100

PC PNRB003

ORANGE #100/180/180

PC PNRB004



Polishing for shine

Recommended for polishing acrylics and the natural nail to achieve surface shine. These tools are a perfect alternative for Japanese manicure or polisher kits to ensure long-lasting, high shine.

BUFFER HALFMOON GREEN #280/280

■ Surface refiner with a halfmoon shape

As a last step for refining the surface of acrylics and the natural nail before final polishing for high shine.

PC PNR0612



HALFMOON ORANGE SUPER SHINER #400/3000

■ Double-sided surface refiner/polisher with a halfmoon shape

Use the orange side for refining the nail surface, then polish the nails with the white side to achieve a long-lasting, high shine.

PC PNR0611



THREE-WAY SHINER #240/800/3000

■ 3-sided surface refiner/polisher shaped like a nail file

Use the purple and the white side for refining the nail surface, then polish the nails with the grey side to achieve a long-lasting, high shine.

PC PNR0400



TWO-WAY SUPER SHINER #600/3000

■ Double-sided surface refiner/polisher shaped like a block/nail file

Use the green side for refining the nail surface, then polish the nails with the white side to achieve a long-lasting, high shine.

NAIL FILE

PC PNR0404

BUFFER BLOCK

PC PNRB012



BUILDER & nail art brushes



Gel builder brushes

BASIC LINE GEL #6

■ Straight-edge gel builder brush with synthetic bristles

Recommended specifically for trainees, and designed to facilitate the shaping of the smile line and the application of the right amount of product.

PC PNEZ023



GEL LAQUER #6

■ Oval profile gel bilder brush with synthetic bristles

The flattened and rounded tip facilitates pushing the builder gel towards the rear skin fold and wiping the French smile line.

PC PNEZ028



GEL JEWEL

■ Straight-edge gel builder brush with synthetic bristles

#4 has a smaller brush head that makes it ideal for shorter nails and for swiping the smile line. The larger brush head of #6 comes in handy when a larger amount of product needs to be applied and for extreme nail shapes.

#4

PC PNEZ020

#6

PC PNEZ021



DIAMOND PROFESSIONAL GEL #6

■ Diamond handle gel builder brush with synthetic bristles

We recommend it for sculpting professional gel nails. Excellent choice for our clear and nail bed extension materials.

PC PNEZ022



GEL GRANDE

■ Larger, oval profile gel builder brush with natural bristles

Specially designed to conform to the nail bed in order to facilitate precise application and spreading of gels (including colored materials). The perfect choice for less experienced nail technicians. Also recommended for applying AcrylGel.

PC PNEZ026

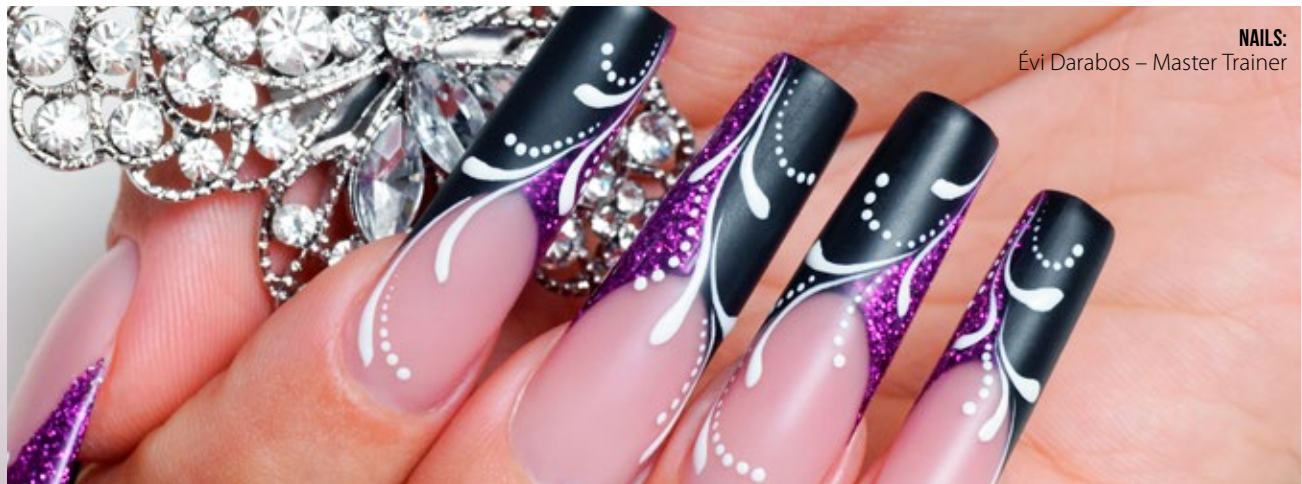


GEL PICCOLO

■ Smaller, oval profile gel builder brush with natural bristles

Special brush with shorter bristles. The design conforms to the nail bed in order to facilitate precise application and spreading of gels (including colored materials). Also recommended for applying AcrylGel.

PC PNEZ027



Acrylic builder brushes

BASIC LINE ACRYL

■ Acrylic builder brush with natural bristles

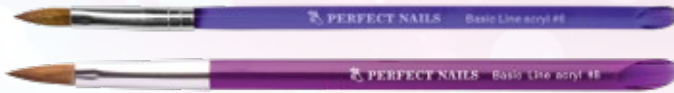
The special, flattened brush base and pointed tip facilitate the spreading of product and the creation of an elegant smile-line. This brush is suitable for short nails and working with a small amount of material. Recommended for trainees.

#06

PC PNEP030

#08

PC PNEP029



ACRYL JEWEL

■ Acrylic builder brush with flattened head and natural bristles

This acrylic builder brush has a flattened head and a pointed tip. The bristles are more bendy, enabling a more flexible handling of product. The jewel brush features a diamond cut metal handle and cap. Recommended for daily salon work.

#08

PC PNEP027

#10

PC PNEP028



DIAMOND MASTER ACRYL

■ Acrylic master brush with natural bristles

The extra thick, hard-packed, stronger bristles make this brush soak up liquid better, and facilitate the pushing and spreading of product. The brush has a precision tip that helps to achieve a perfect smile line. Recommended for championships, quick salon work, and for sculpting longer nails. The jewel brush features a diamond cut metal handle and cap.

#10

PC PNEP018

#12

PC PNEP019



Nail Art brushes



CARO-LINE 1

■ Slimmed tip nail art brush with natural bristles

This brush can take up and hold material in larger quantities. We developed this brush in co-operation with Carla Nappi, Italian champion.

PC PNED043



AQUARELLE #4

■ Aquarelle nail art brush with natural bristles

Recommended for the aquarelle technique, gel painting and working with Plastiline Gel. The rounded base and the pointed tip make this brush ideal for painting smaller and larger designs as well.

PC PNED014



NAIL ART 3D

■ Flattened conical nail art brush with pointed tip and natural bristles

Recommended for gel painting, Plastiline Gel, and creating acrylic flowers and other 3D effects.

#02

PC PNED032

#04

PC PNED033



ONEMOVE #1

■ Wedge tip brush with natural bristles

Recommended for the one-move technique.

PC PNED030



ONEMOVE REVO

■ Wedge tip brush with natural bristles

The enhanced version of the OneMove #1 brush. A denser tip brush. Allows for more precise nail art designs even on larger areas.

PC PNED042



NAIL ART

■ Extra slim nail art brush with synthetic bristles

Suitable for painting tendril designs, thin straight lines, gel contours and painting a narrow French edge.

SHORT

PC PNED034

MEDIUM

PC PNED035

LONG

PC PNED036



SHORT
NAIL ART



MEDIUM
NAIL ART



LONG
NAIL ART



MINI NATURAL #000

■ Super slim (4 mm) nail art brush with natural bristles

Recommended for precision painting with the aquarelle technique, creating fine lines to decorate flowers and extra thin contours.

PC PNED039





NAIL ART 300 #1

■ Short nail art brush with natural bristles

Recommended specifically for acrylic paints and the aquarelle technique to create fine lines and tendrils.

PC PNED011



ART & PAINT

■ Cat's tongue nail art brush with natural bristles

Suitable for gel painting, as well as the One move and the Zhostovo techniques.

PC PNED044



ACRYLIC NAIL ART #2

■ Thin, pointed tip brush with natural bristles

Excellent for acrylic nail art, smaller swirls, lace patterns and acrylic type painting.

PC PNEP002



NAIL ART BRUSH SET

■ Extra slim nail art brush set with synthetic bristles

Suitable for creating designs with the finest details using Delux Gel, Cream Gel and other color gels, lacgels and acrylic paints.

3 PCS / SET PNED050



PERFECT LINE

■ Elongated, slim-tip nail art brush with natural bristles

The rigid neck and the flexible tip of the brush facilitate the painting of thin lines and fine tendrils.



S

PC PNED047

M

PC PNED046



OMBRE

■ Comb-like brush with thinned out tip and natural bristles

Suitable for creating seamless gradients with gel, lacgel and acrylic paints. Perfect for Ombre and Baby boomer effects.

PC PNED048



ART & CORRECTOR PEN

■ Multifunctional silicone tool

Flexible, fine tip, steady neck. Suitable for removing materials from the skin, cleaning the cuticle, creating lace and 3D acrylic patterns, placing/arranging minor decorative elements on the nails, applying the AcrylGel and Spider Gel materials as well as applying rhinestones onto the nail surface.

PC PNED049



OMBRE SPONGE

■ Double-headed sponge applicator

Allows for easier application of nail art powders and flakes. Use this sponge to achieve seamless color gradients. Ideal for Ombre, Baby boomer and Airbrush techniques. The heads are replaceable, and the handle features sparkly crystals.

PERFECT TIP: Please store this tool horizontally and clean thoroughly after use. Make sure to wait for the tool to dry completely before using it again. Aroma, Gel or Brush Cleaner is recommended for cleaning the tool.

PC PNSE650

REPLACEMENT HEADS

4 PCS / PACK PNSE651



TIPS

nail forms



Tips

ULTRA FORM TIP

Straight, rectangular tips with parallel sides and a shallow curved, slight C-curve. Regular contact area, medium size support surface. Also available in clear. It is thinner, allowing quicker filing when leveling out the nail enhancement.

NATURAL	15 PCS PNTUF11-20	50 PCS PNTUF51-60	100 PCS PNTUF00
CRYSTAL	15 PCS PNTCU11-20	50 PCS PNTCU51-60	100 PCS PNTCU00



COMPETITION TIP

Professional qualities: flexible, super strong and extra thin. No support surface.

NATURAL	50 PCS PNTVN04-10	100 PCS PNTVNK
CLEAR	50 PCS PNTVC04-10	100 PCS PNTVCK



STILETTO TIP

Special tip pre-cut to stiletto shape, with narrow contact area.

NATURAL	50 PCS PNTSN51-60	100 PCS PNTSN00
CLEAR	50 PCS PNTSC51-60	100 PCS PNTSC00

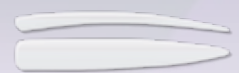




EXTRA LONG CLEAR TIP

Extra long, straight end tip with normal contact area.

10 PCS PNTELC01



EXTRA LONG STILETTO CLEAR TIP

Extra long, special stiletto-shape tip with normal contact area.

10 PCS PNTELC02



DEEP CURVE TIP

Half-hawk, medium curve tip with normal contact area.

15 PCS PNTDC01-10

50 PCS PNTDC51-60



FRENCH WHITE TIP

Tip with white body and narrow contact area, specifically for creating French edge nails.

15 PCS PNTFW10-19

50 PCS PNTFW50-59

100 PCS PNTFW00



NAIL GLUE

Extra strong adhesion, quick setting, non-discoloring tip glue.

3 G PNRA001

7,5 G PNRA010

Nail forms

BAT-SHAPE NAIL FORM

Premium quality nail form with strong adhesion and optimal curve retention. Once placed, it stays put and retains the curve as long as needed. The nail form allows extensions up to size XL, and the precision grid facilitates the sculpting of the desired shape and length.

50 PCS PNSE012

500 PCS PNSE011



PERFECT STILETTO NAIL FORM

Good shape retention, high adhesion, precision bending due to the stiffness of the material. Made of thicker paper, features an elaborate system of nail form lines and perfectly fitting adhesion flaps to help sculpting normal and extreme long stiletto nails.

50 PCS PNSE016

250 PCS PNSE017

500 PCS PNSE018



EXTREME NAIL FORM

Double-sided, 8cm wide, extremely long (11cm), offers rock solid adhesion. One side is suitable for angular, corner-like edges, the other one is used for thinner, tapered shapes. Specially designed, huge flaps provide extreme adhesion and stability without hindering the nail technician's job. The flaps conform to the finger perfectly, the strong material and thick paper keep the finger steady like a splint. Allows for the safe sculpting of long nails even for clients with sweaty hands. Symmetric nail form lines and high stability make this product suitable for creating even the most extreme competition entry show nails and really spectacular photo-shoot nails.

50 PCS PNSE014

250 PCS PNSE015

500 PCS PNSE013



PROFESSIONAL

metallic tools &

accessories



PERFECT MANICURE SCISSORS

■ Manicure scissors for professional use, made of medical grade Solingen stainless steel

These premium quality scissors feature a pair of precisely and smoothly closing cutting edges. The unique design of the blades allows a more comfortable and precise use, providing perfect cutting even at the tip of the scissors. The blades stay sharp for an extended time. Their surface has a silky-matte finish for extra comfort during use.



SPATULA

■ Metallic mixing spatula

For stirring builder gels, mixing in glitter and acrylic powders, and positioning the AcrylGel on the nail.

PC PNSE626



CUTICLE PUSHER & SCRAPER – PRO

■ Professional, curved cuticle pusher & scraper

Double-sided metallic cuticle pusher & scraper for preparing the natural nail for manicure and nail enhancements. The spoon head is used for pushing back the cuticle, while the curved head is used for scraping up the tethered skin from the nail surface.

PC PNSE623



CUTICLE PUSHER & SCRAPER – FLAT

■ Straight and flat cuticle pusher & scraper

Double-sided metallic cuticle pusher & scraper for preparing the natural nail for manicure and nail enhancements. The spoon head is used for pushing back the cuticle, while the straight/flat head is used for scraping up the tethered skin from the nail surface.

PC PNSE624



C-CURVE PINCHER TOOL

■ Sturdier construction with a firmer grip

Specially designed X-cross nail enhancement pincher for creating and retaining the perfect G-curve.

PC PNSE629



TIP CLIPPER

■ A straight edge tip clipper

For nail enhancement with tips, and shortening the existing nail enhancements.

PC PNSE628



NAIL ART TWEEZERS

■ Curved Nail Art tweezers

Pair of curved tweezers with pointed tips making it easier to pick up the smaller nail art bits.

PC PNSE627



DIAMOND DOTTING TOOL

■ Decor and dotting tool with diamond-studded handle

This tool has a spike and a precision dotting end for various types of nail art with color gels, color acrylics and acrylic paints.

PC PNSE632

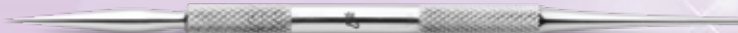


NAIL ART PEN

■ Nail art and dotting pen

Double-headed nail art pen with a pointy and a rounded head. Suitable for working on both natural nails and nail enhancements involving acrylic paint, color gels and acrylics.

PC PND10

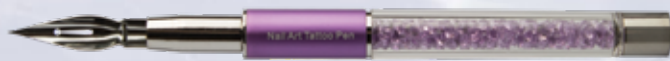


NAIL ART TATTOO PEN

■ Nail tattoo pen with replaceable nibs

Rigid and extremely pointy tip allows for drawing precise patterns and even text lines using properly thinned acrylic paint.

PC PNSE630



DRILL BITS

& sanding bits



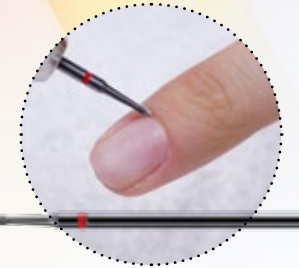
For prepping

SMALL CONE DRILL BIT

■ Small carbide cone drill bit with lozenge-pattern teeth

With fine teeth, recommended specifically for precision jobs, the quick removal of the cuticle (upon pushing back) and cleaning.

PC PNG4056



PUSH UP DRILL BIT

■ Carbide bit for manicure

Recommended for lifting the pushed back cuticle and cleaning the nail plate. Also allows for the easy removal of the thickened skin at the nail folds. Also recommended for clients with sensitive skin.

PC PNG4073

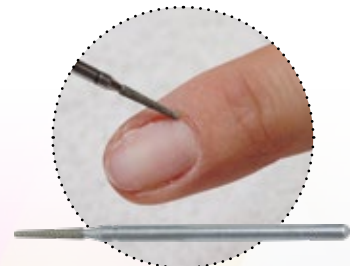


NARROW, CONICAL, DIAMOND-ENCRUSTED DRILL BIT

■ Narrow, conical, diamond-encrusted drill bit for skin removal

This bit is ideal for cleaning up the cuticle areas that are hard to reach with a nail file. It removes the cuticle tethered to the nail plate and creates a matte nail surface. We recommend using this drill bit at a lower setting of your drill machine.

PC PNG4063



NARROW, CYLINDRICAL, DIAMOND-ENCRUSTED DRILL BIT

■ Cylindrical, diamond-encrusted carbide bit

Recommended for removing tethered skin at the cuticle area.

PC PNG4064



CONE-SHAPED, STONE-ENCRUSTED DRILL BIT

■ Cone-shaped stone-encrusted carbide drill bit

Suitable for pushing back the cuticle and gently cleaning the nail plate at the cuticle area.

PC PNG4065

FLAME-SHAPED, DIAMOND-ENCRUSTED DRILL BIT

■ Oblong, cylindrical, diamond-encrusted carbide bit with a pointed end

Suitable for deep cleaning the pushed back cuticle.

PC PNG4066

BALL-SHAPED, DIAMOND-ENCRUSTED DRILL BIT

■ Ball-shaped, diamond-encrusted carbide bit

Suitable for buffing uneven skin edges and smoothing out the edges after the use of scissors.

PC PNG4067

RUSSIAN MANICURE DRILL BIT SET

■ Set of 5 different carbide bits

A set especially selected for a technique combining several different Russian Manicure techniques.

5 PCS PNG4068

For surface refining

SILVER DRILL BIT

■ Medium rough, conical carbide drill bit

Suitable for refining and filing nail enhancements, and for infill. This bit is also suitable for pedicure: use it for dry or wet callus removal. Easy to sanitize.

PC PNG4054

GOLD DRILL BIT

■ Medium rough, conical carbide drill bit

Suitable for refining and filing nail enhancements. This bit is also suitable for pedicure: use it for dry or wet callus removal. Easy to sanitize.

PC PNG4055

POINTY, CONE-SHAPED DRILL BIT

■ Pointy, cone-shaped carbide drill bit with lozenge-pattern teeth

Fine teeth specifically for precision manicure, for thinning the gel or acrylic layer by the cuticle and cleaning the free edge under the nail at the prepping phase.

PC PNG4062

CARBIDE DRILL BIT WITH A LOZENGE PATTERN

■ Cone-shaped carbide drill bit with a lozenge pattern for nail thinning

Perfect for the from-below cleaning of the free edge and nail thinning, filing out air bubbles as well as the filing of the smile line and cleaning the corners.

PC PNG4072

For removal and shortening

SILVER DRILL BIT

■ Medium strength carbide bit for gels



Specifically for removing and shortening gel nail enhancements. For pedicure; use it for dry or wet callus removal; perfectly sanitizable.

PC PNG4052

SILVER DRILL BIT

■ Rough carbide drill bit for acrylic techniques



Specifically for removing and shortening acrylic nail enhancements. For pedicure; use it for dry or wet callus removal; perfectly sanitizable.

PC PNG4053

ROUNDED HEAD, CYLINDRICAL DRILL BIT

■ Medium strength, cylindrical carbide bit for gels



Wider bit with rounded edge specifically for removing and shortening gel nail enhancements and surface refining. Also suitable for removing foot calluses (requires a special pedicure machine). Perfectly sanitizable.

PC PNG4058

ROUNDED HEAD, CYLINDRICAL DRILL BIT

■ Rough, cylindrical carbide drill bit for acrylic techniques



Wider bit with rounded edge specifically for removing and shortening acrylic nail enhancements and surface refining. Also suitable for removing foot calluses (requires a special pedicure machine). Perfectly sanitizable.

PC PNG4059

LARGE, LAMELLAR CARBIDE DRILL BIT

■ Large carbide drill bit with lamellar grit



The sharp lamellar grit is ideal for shortening, thinning and removing nail enhancements. Recommended for the quick removal of a large amount of material and buffing out the bubbly parts. Also suitable for removing foot calluses (requires a special pedicure machine). Perfectly sanitizable.

PC PNG4060

LARGE DRILL BIT WITH RHOMBOID GRIT

■ Large carbide drill bit with rhomboid grit



The sharp teeth are ideal for shortening, thinning and removing nail enhancements, buffing out the bubbly parts and surface buffing. Also suitable for removing foot calluses (requires a special pedicure machine). Perfectly sanitizable.

PC PNG4061

CYLINDRICAL DRILL BIT WITH RHOMBOID GRIT

■ Cylindrical carbide bit with rhomboid grit for lacgel technique



Ideal for removing lacgel and gel, shortening for filling and general refining or complete surface thinning and surface refining. The product is safe to use and won't harm the skin.

PC PNG4071

STONE CYLINDER SMALL DRILL BIT

■ Small, stone-encrusted carbide bit for pedicure



This drill bit is mainly recommended for pedicure. It is suitable for the removal of calluses and for the de-bulking of a thickened nail plate. Easy to sanitize.

PC PNG4002

Sanding bands

■ Replaceable sanding bands

High quality sanding bands which will stay on the jack even at high rpm's. Various grain sizes to offer the right roughness sanding band for each phase.



BASIC #80

5 PCS PNG4100

50 PCS PNG4103



BASIC #100

5 PCS PNG4101

50 PCS PNG4104



BASIC #120

5 PCS PNG4102



PREMIUM #80

5 PCS PNG4109

50 PCS PNG4113



SANDING BAND MANDREL

Stainless steel mandrel for sanding bands.

PC PNG4110



Annual International
Product Training





Nail Drills

PERFECT DRILL MACHINE

■ Professional drill machine with micromotor

Premium quality drill machine manufactured by a dental instrument manufacturer, featuring a professional handpiece equipped with a super silent micromotor. The machine has a holder for the handpiece and a flexible cable. A powerful, advanced micromotor provides seamless change of rotational speeds between 0 and 30 000 rpm for the handpiece, which does not wobble, and is particularly gentle on the nail surface. The direction of the rotation can be switched, and the operation is vibration-free. The advanced chuck of the handpiece makes the changing of drill bits quick and easy, saving you precious time during salon work. Recommended for beginner and advanced nail techs for manicure techniques and nail enhancements.

PC PNG3040



SILICONE DUST CAP

■ Protects the handpiece of the nail drill machine against dust

Use our silicone dust caps to prevent dust from entering the handpiece of the drill during the filing process. As such, the chuck of the handpiece is protected, extending the lifecycle of the handpiece.

3 PCS / PACK PNSE648

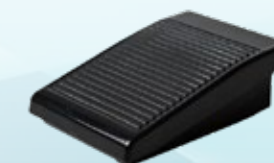


PERFECT DRILL PEDAL

■ Use with the Perfect Drill machine

This accessory allows the Perfect Drill machine to be operated by foot.

PC PNG3041





BASIC DRILL MACHINE

■ Semi-professional drill machine with micromotor

A compact, streamlined, semi-professional drill machine that has a holder for the handpiece and a flexible cable. A strong, advanced micromotor provides seamless change of rotational speeds between 0 and 20 000 rpm for the handpiece, which does not wobble, and is particularly gentle on the nail surface. The direction of the rotation can be switched, and the operation is vibration-free. The advanced chuck of the handpiece makes the changing of drill bits quick and easy, saving you precious time during salon work. Recommended for trainees and advanced nail techs for nail extensions and manicure techniques. The compact size makes this machine an ideal choice as a first or on-the-go nail drill.

PC PNG3043

PROXXON MICROMOT 50

■ Multifunctional drill machine without adapter



This 20cm long, 40W drill features a fiberglass polyamide casing with bearings. It has an integrated microswitch in the handle, a 6-piece collet set, and enables the use of chucks between 1 and 3.2 mm in diameter. The advanced chuck of the handpiece makes the changing of drill bits quick and easy, saving you precious time during salon work. The rotations per minute are adjustable on the adapter (max. 20 000 rpm). A network adapter is not included with the machine, but it is necessary for the nail drill's operation.

PC PNG3002

PROXXON NETWORK ADAPTER

■ Adapter for the Proxxon Micromot 50 drill machine



This network adapter is needed for the operation of a Proxxon Micromot 50 nail drill. The adapter enables the adjustment of the nail drill's output.

PC PNG3000

UV/LED lamps

MOONLIGHT PLUS UNIVERSAL UV/LED LAMP

■ 48W UV/LED lamp with white light

This lamp features a dual light source and 36, well-arranged UV/LED lights (365nm + 405nm), providing an ultra quick cure time for products. The lamp's 48W output is much higher than the output of traditional 4-tube lamps. The white light of this lamp is eye-friendly and it illuminates the whole area, enabling consistent curing. The lamp has a half-down ("low" heat / reduced speed) mode to protect the nailbed from a burning feeling induced by the sudden heat. This model is equipped with timer buttons (10–30–60–99 sec), a digital display, an infrared and smart sensor and timer memory. When used without the timer function, the on/off switching is sensor-controlled (120 sec). Another benefit of the device is the external power plug / adapter that protects against electric shocks. The lamp has a detachable base, so this model is also ideal for pedicure.

PC PNG1031



SMART UNIVERSAL UV/LED LAMP

■ 48W UV/LED lamp without a base

This lamp features a dual light source and 21, well-arranged UV/LED lights, providing an ultra quick cure time for products. The lamp's 48W output is much higher than the output of traditional 4-tube lamps. The lamp has a half-down ("low" heat / reduced speed) mode to protect the nailbed from a burning feeling induced by the sudden heat. This model is equipped with timer buttons (30–60–99 sec), a digital display, an infrared and smart sensor and timer memory. Having no base, this lamp is also ideal for pedicure.

PC PNG1034





NEW

30 PCS
UV/LED



UNICORN UV/LED LAMP

■ 48W UV/LED lamp with holographic design

Universal 48W UV/LED lamp with a holographic finish. The lamp features 30 energy-saving LEDs, and their sensors are placed lower in order to enable perfect curing on the thumb as well. The lamp has a half-down ("low" heat / reduced speed) mode to protect the nailbed from a burning feeling induced by the sudden heat. This model is equipped with timer buttons (30–60–99 sec) and a smart sensor. The magnetized base of the lamp has a mirror surface and it is detachable.

PINK	PC	PNG1036
SILVER	PC	PNG1037



NEW

30 PCS
UV/LED



NEW

6 PCS
UV/LED

USB-CABLE
INCLUDED

MOUSE GEL POLISH UV/LED LAMP

■ 6W UV/LED lamp for gel polish application

The extra small, highly portable 6W UV/LED lamp has a reduced output, timer buttons (45–60 sec) and is primarily recommended for curing lacgel. The lamp can be operated and charged via USB – from a mobile charger, a laptop, a powerbank or a desktop PC. The feet of the lamp can be folded in and out, without influencing the operation. Recommended for beginners, trainees and for at home use, although professional nail techs might also find this useful as a backup lamp or a temporary solution.

WARNING! Please apply lacgel in a thin layer to ensure complete curing.

PC	PNG1038
----	---------

MASTER TABLE LED LAMP

■ Desktop lamp with 98 LEDs

Elongated, 15W desktop LED lamp with a fastening apparatus that safely locks the lamp in place. The lamp has a flexible head allowing 360-degree-adjustments to achieve the perfect angle for your lighting. There are 98 energy-saving LEDs, providing perfectly bright and white, consistent lighting for your workstation. The lamp features a dimmer function, allowing selection between four brightness levels. This lighting does not produce vibrations on photos and videos.

PC	PNG1035
----	---------



NEW

4
BRIGHTNESS
LEVELS

98 PCS
LED

360-DEGREE-
ADJUSTMENTS

DIMMER
FUNCTION

VIBRATION-
FREE

STAMPING

accessories



STAMPING NAIL POLISH

NEW

■ Nail polish for stamping

High-pigmentation nail polish colors designed for stamping. The extra pigmentation ensures that even the most intricate designs and the finest lines can all be seen on the end result. This nail polish is a bit thicker than regular nail polish to allow adequate drying time for stamping. It dries extremely quickly after application from the stamper. The stamping polish should be used on a cured, cleansed, and then buffed surface. A flexible top gel or top coat is needed as a finishing touch.

PERFECT TIP: Before application, make sure to shake the nail polish bottle to release pigments from the bottom.

DRY TIME: 1–2 minutes



BLACK

7 ML PNDNY014



WHITE

7 ML PNDNY015



PINK

7 ML PNDNY016



RED

7 ML PNDNY020



BLUE

7 ML PNDNY021



YELLOW

7 ML PNDNY022



NAILS:
Évi Darabos
Master Trainer

STAMPING SCRAPER

■ Plastic card for stamping

Extra slim, bendable, white plastic card that leaves an ideal amount of nail polish in the nooks and crannies of the stamping plates. Easy to clean.

PC PNDNY013



NEW

STAMPING & PAINTING GEL 2 IN 1

■ No-cleanse gel for nail art

This no-cleanse, slightly flexible, high-pigmentation nail art gel provides complete coverage even if applied in a thin layer, making it an ideal choice for stamping, gel painting and the One Move technique. The gel-like consistency and the extra pigmentation ensure the visibility of the finest, most delicate lines on the end result. The stamping gel should be used on a no-cleanse, cured surface. The product cures to shiny, so there is no need for a finishing top gel.

WARNING! When used on a matte surface, a top gel is necessary as a finishing touch.

CURE TIME: UV 2 min., UV/LED 60 sec.

THICKNESS	● ● ● ● ● ●
FLEXIBILITY	● ●
SOLUBILITY	●



STAMPER - FROSTED CLEAR

■ Transparent stamper with a magnifying glass

Recommended for larger surfaces, though the integrated magnifying glass also helps with the positioning of smaller designs. The stamper is transparent, so you can place your design as accurately as possible. There is a see-through cap to protect the stamper when it is not in use.

PERFECT TIP: Gently clean the stamper with acetone-free nail polish remover before and after each use.

PC PNDNY012

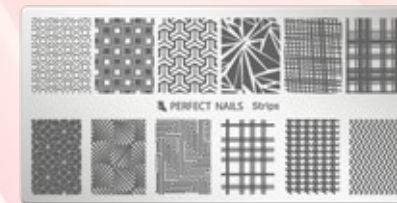
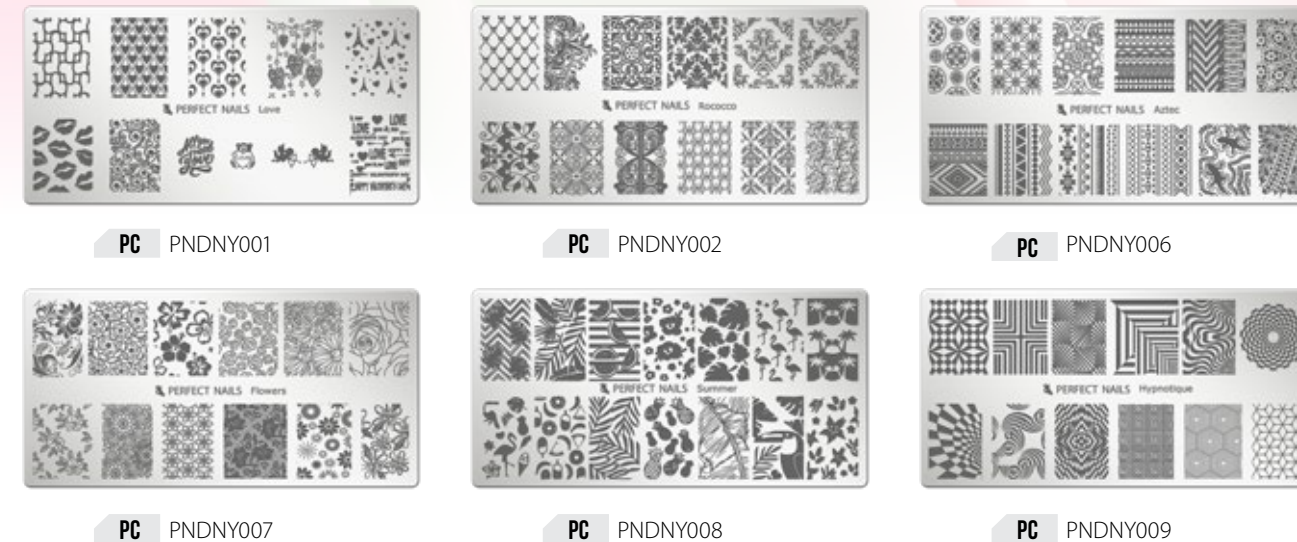


STAMPING PLATE

■ Stamping plate made of metal with various patterns

Each 6x12 cm plate features a specific theme and has 12 different patterns that are all 100% usable. The stamping plates are ideal for stamping on the entire surface of the nail or for partial designs.

PERFECT TIP: Remove the protective foil before use, and thoroughly clean the plate's surface with acetone.



PC PNDNY010

STAMPER - CLEAR

■ Transparent stamper

Recommended for smaller surfaces and smaller designs. The stamper is transparent, so you can place your design as accurately as possible. There is a see-through cap to protect the stamper when it is not in use.

PERFECT TIP: Gently clean the stamper with acetone-free nail polish remover before and after each use.

PC PNDNY011



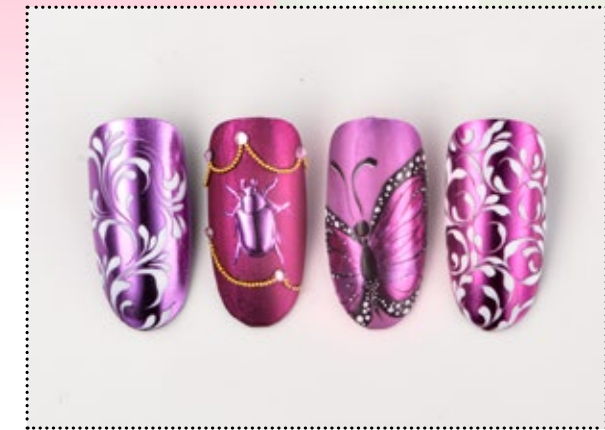
Chrome Powders

■ Extra finely milled, pixel-free chrome powders for surface nail art

These powders can be rubbed onto nail enhancements and lacgel, and they can also be used in combination with stamping.

CHROME POWDERS

■ Iridescent chrome powders



WHITE CHROME POWDER PNP0075	ROSE GOLD CHROME POWDER PNP0088	PURPLE CHROME POWDER PNP0089
MAGENTA CHROME POWDER PNP0090	BLUE CHROME POWDER PNP0091	TURQUOISE CHROME POWDER PNP0092

UNICORN CHROME POWDERS

■ Translucent chrome powders with a silky shine

PURPLE UNICORN POWDER PNP0083	PINK UNICORN POWDER PNP0084
--	--

HOLO LASER POWDER

■ Semi-translucent chrome powder with a holographic effect

HOLO LASER POWDER PNHL01

HOW TO USE

Rub onto the surface of cured no-cleanse top gel with an ombre sponge, then apply two layers of flexible top gel (e.g. Cool Shine Ever Gel). If used with stamping, gently press the powder into the halfway dried stamping polish or the halfway cured stamping gel, then apply a flexible top gel to seal your design.

PERFECT TIP: Sirene's Secret Holo Nail stickers are an ideal choice for masking to create quick and easy designs.

Pigment powders

■ Extra finely milled pigment powders that provide great coverage and are also suitable for surface and encapsulated nail art

These powders can be gently dabbed onto nail enhancements and lacgel, or encapsulated using builder gels, acrylics, Liquid Stone Gel, Glue Gel. They are also ideal for a French edge, and can also be used in combination with stamping.

THERMO POWDERS

■ Pigment powders shifting color with the temperature

Pigment powders of vivid, neon-like tones in warm air and deep, dark tones in the cold. Suitable for the smoke technique, creating gradients and complete coverage.



MICA SILK POWDERS

■ Pigment powders with a slight pearly sheen



HOW TO USE

Rub onto the surface of halfway cured lacgel or no-cleanse top gel with an ombre sponge, then apply a thicker layer of flexible top gel. If used with stamping, gently press the powder into the halfway dried stamping polish or the halfway cured stamping gel, then apply a flexible top gel to seal your design.

PERFECT TIP: When creating an encapsulated design, clear-capping can be done with builder gel, acrylic or a thicker coat of flexible top gel (e.g. Extreme Gloss Gel).

Glitter powders

■ Finely milled glitter dust for surface and encapsulated designs

These powders can be sprinkled onto top gel or color gel for sugaring designs, or encapsulated using builder gels, acrylics, Liquid Stone Gel and Glue Gel. They are also ideal for a French edge,



HOLO PIXIE POWDER

■ Holographic glitter dust



HOW TO USE

Sprinkle onto an uncured layer of color gel (e.g. Delux Gel) or no-cleanse top gel (e.g. No Cleanse Top Shield), cure the nail, then gently remove the excess powder with a dusting brush.

PERFECT TIP: These powders can be mixed into the builder gel or acrylic powder before creating the nail enhancement for an encapsulated design.

PERFECT PIXIE

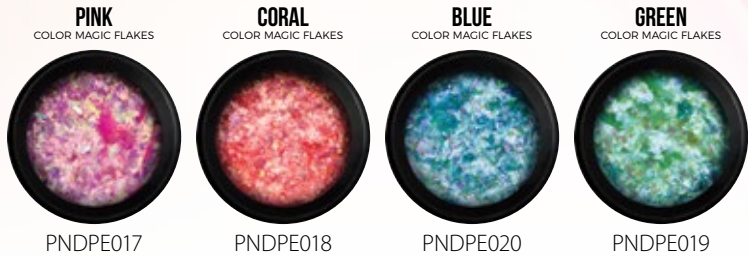
■ Colorful glitter powders



Nail Art flakes

■ Ultra thin, glittery nail art flakes for surface and encapsulated designs

These flakes can be gently rubbed onto nail enhancements and lacgel, or encapsulated using builder gels, acrylics, Liquid Stone Gel, Glue Gel. They are also ideal for a French edge,



COLOR MAGIC FLAKES

■ Semi-transparent, iridescent flakes in various colors



CHAMELEON FLAKES

■ Multi-chrome, iridescent flakes



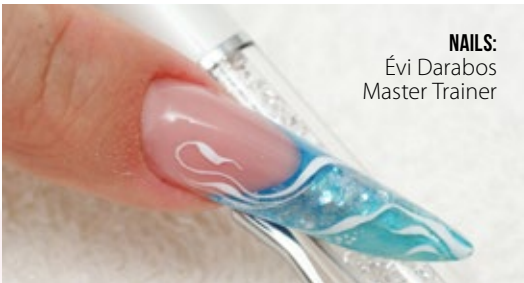
METAL CHROME FLAKES

■ Shiny, chrome-effect flakes



MICA FLAKES

■ Translucent, shiny flakes in various colors



HOW TO USE

Rub onto the surface of cured no-cleans top gel with an ombre sponge, then apply two layers of flexible top gel (e.g. Speed & Shine Top Gel).

PERFECT TIP: When creating an encapsulated design, clear-capping can be done with builder gel, acrylic or a thicker coat of flexible top gel.

Nail Art flitters

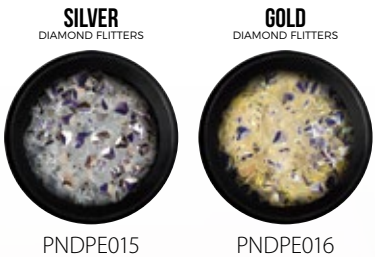
■ Various shapes of flat flitters for encapsulated designs

These flakes can be encapsulated using builder gels, acrylics, Liquid Stone Gel or Glue Gel. Apply a generous layer of thicker consistency top gel (e.g. Nail Art Top Gel).



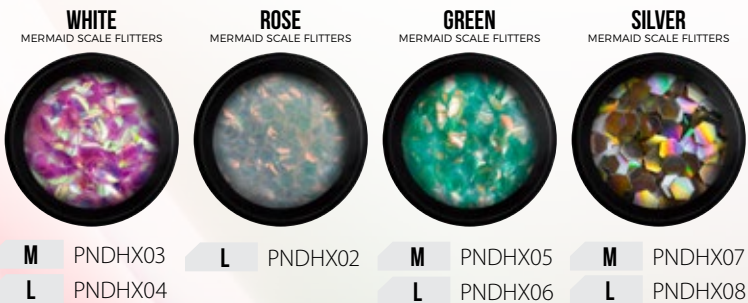
NAIL CONFETTI

■ Round shaped flat confetti in various sizes and colors with a matte and pearly finish



DIAMOND FLITTERS

■ Diamond shaped iridescent flitters



MERMAID SCALE FLITTERS

■ Fish scale shaped, semi-transparent, iridescent flitters in various colors

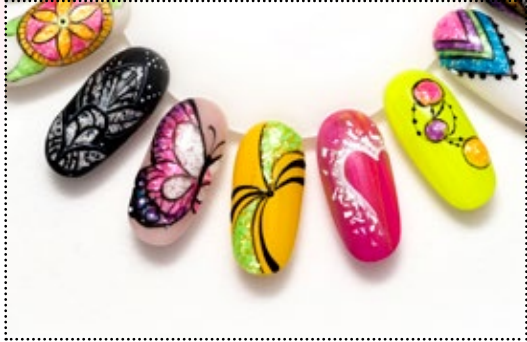
Nail Art bits and pieces

■ Mid-sized, irregular shaped nail art pieces for encapsulated designs

These pieces can be encapsulated using builder gels, acrylics, Liquid Stone Gel or Glue Gel. Clear-capping can be done with builder gel, acrylic or a thicker coat of flexible top gel (e.g. Nail Art Top Gel).

NEON FLAKES

■ Neon-colored, synthetic pieces with a matte finish



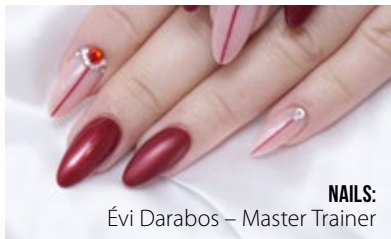
PERFECT OPAL

■ Real opal bits with natural multi-chrome iridescence



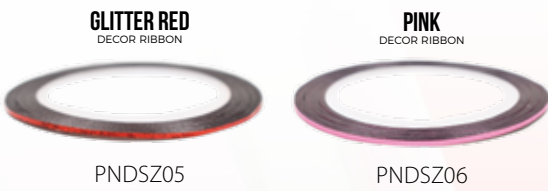
Self-adhesive Nail Art stickers

■ Ideal for surface designs



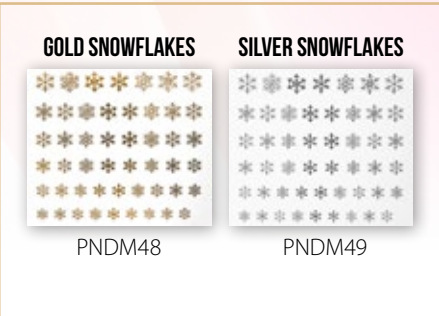
NAIL ART TAPE

■ Self-adhesive, thin, colorful stripes



METAL NAIL STICKERS

■ Self-adhesive stickers with a metallic finish



BROKEN GLASS NAIL STICKERS

■ Iridescent, multi-chrome self-adhesive stickers with broken glass effect

HOLO NAIL STICKERS

■ Self-adhesive stickers with a metallic finish to cover the whole nail

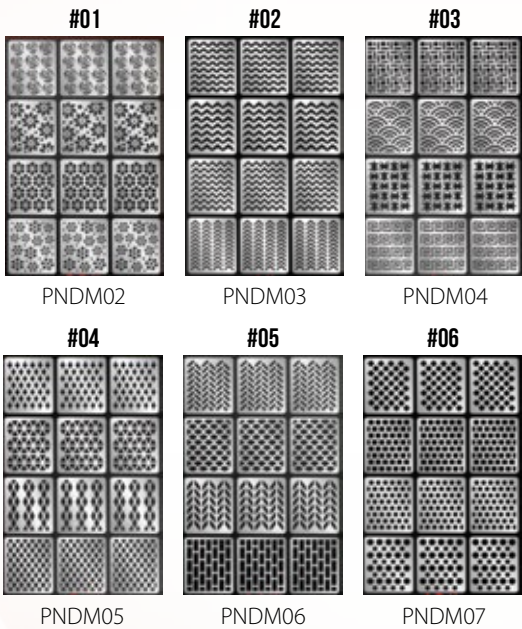


HOW TO USE

Cut the selected shape to size, then stick the adhesive side onto a buffed, dusted and dry surface. Apply a thicker coat of flexible top gel (e.g. Extreme Gloss Gel).

HOW TO USE

Cut the selected shape to size, then stick the adhesive side onto a buffed, dusted and dry surface. Using vertical movements, gently remove the excess with a fine grit nail file (Premium #180). Apply two coats of flexible top gel (e.g. Extreme Gloss Gel).



SIRENES' SECRET HOLO NAIL STICKERS

■ Self-adhesive stickers ideal for masking



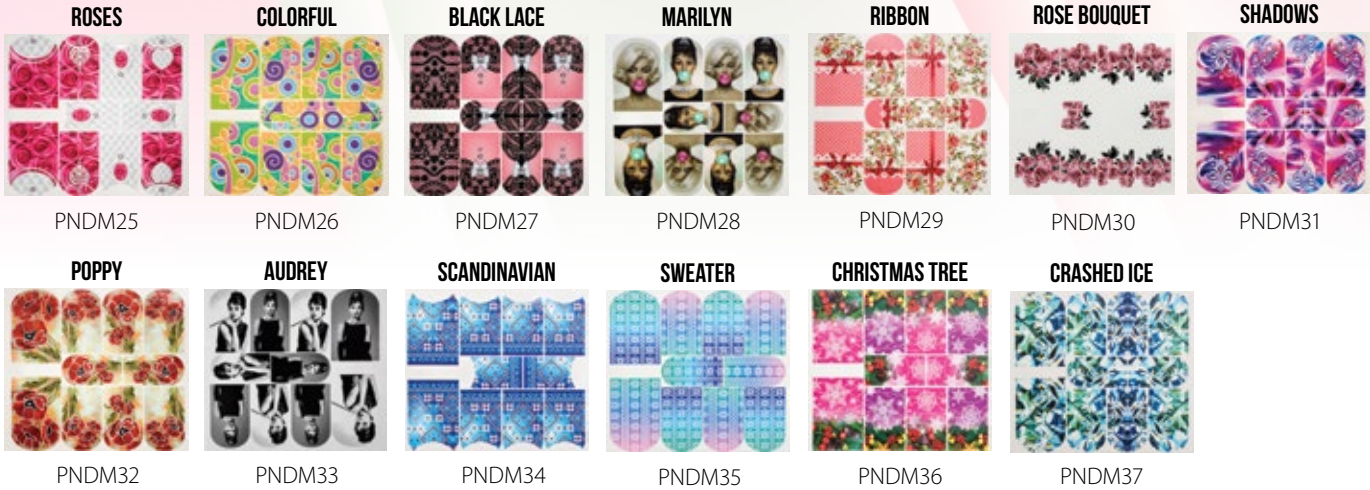
HOW TO USE

Stick the self-adhesive side onto a layer of cured no-cleanse top gel (e.g. Cool Shine Ever Gel) so that we see the negative of the chosen pattern, then take an ombre sponge and rub chrome powder onto the area. Remove the masking sticker, and seal your design with two layers of flexible top gel (e.g. Cool Shine Ever Gel).

Ideal for surface designs

NAIL DRESS STICKERS

■ Water decals with various patterns to cover the whole nail



NAIL STICKERS

■ Water decals with various patterns



HOW TO USE

Remove the protective film from the chosen decal, cut the shape to size, and immerse it in water for 5 seconds. Take the decal out of the water, and remove the excess water by gently patting the surface of the decal with a dry paper towel. Then carefully remove the backing paper from the decal. Make sure to have a buffed, dry and dusted-off nail surface before you apply and gently smooth out the decal on it. Using vertical movements, gently remove the excess with a fine grit nail file (Premium #180) if needed. If a thicker layer of sticker has been applied to the whole nail surface, seal your design with 2 generous layers of flexible top gel (e.g. Extreme Gloss Gel).

PERFECT TIP: Wrinkles and creases may be fused together by applying a drop of Perfect Bond Primer.

Rhinestones for Nail Art

■ Ideal for surface designs

MERMAID PEARLS

■ A mix of flatback pearls in various sizes and colors



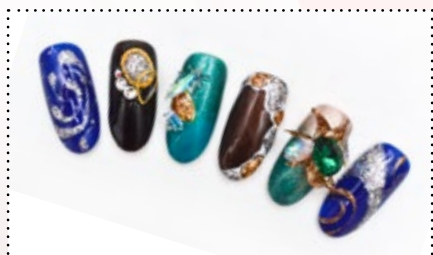
AQUA COCKTAIL DROPS

■ Silver and blue rhinestones with water drop effect



TREASURE ISLAND

■ Mix of rhinestones and beads of various sizes and shapes



3D HOLO DROPS

■ Water drop-shaped holographic nail art stones with 3D effect



MICRO PEARLS XS

■ Size XS metallic beads for jewel effect designs



HOW TO USE

Apply a small amount of Glue Gel on the nail, then position the chosen pearl/rhinestone so that the Glue Gel surrounds it on all sides. Cure for 5-10 seconds. Finish your design by applying a flexible top gel onto the nail (e.g. Cool Shine Ever Gel or Velvet Matt Extra Gel). Do not apply the top gel onto the surface of the pearl/rhinestone itself.

NAILSTAR STRASS

Premium quality rhinestones in various sizes and colors

20 PCS

100 PCS

1 440 PCS

AB CRYSTAL NAILSTAR STRASS	CRYSTAL NAILSTAR STRASS	LIGHT ROSE NAILSTAR STRASS	ROSE NAILSTAR STRASS	FUCHSIA NAILSTAR STRASS	SIAM NAILSTAR STRASS	AQUAMARINE NAILSTAR STRASS	LIGHT TOPAZ NAILSTAR STRASS	LIGHT PEACH NAILSTAR STRASS	SUN NAILSTAR STRASS
SS3 Ø 1.3–1.5 mm	SS5 Ø 1.7–1.9 mm	SS10 Ø 2.7–2.9 mm	SS12 Ø 3–3.2 mm	SS16 Ø 3.2–3.4 mm					

SWAROVSKI CRYSTAL

Swarovski crystals in various sizes and colors

SS3 Ø 1.3–1.5 mm

SS5 Ø 1.7–1.9 mm

SS9 Ø 2.6–2.7 mm

CRYSTAL SWAROVSKI	AB CRYSTAL SWAROVSKI	LIGHT ROSE SWAROVSKI	ROSE SWAROVSKI	FUCHSIA SWAROVSKI	AMETHYST SWAROVSKI	PURE VELVET SWAROVSKI	JAZINT SWAROVSKI	LIGHT SIAM SWAROVSKI	SIAM SWAROVSKI	INDIAN SIAM SWAROVSKI
LIGHT COLORADO SWAROVSKI	COLORADO SWAROVSKI	LIGHT TOPAZ SWAROVSKI	TOPAZ SWAROVSKI	SMOKED TOPAZ SWAROVSKI	JONQUIL SWAROVSKI	EMERALD SWAROVSKI	AQUAMARINE SWAROVSKI	SAPPHIRE SWAROVSKI	COBALT SWAROVSKI	JET SWAROVSKI



Nail Art foils

Ideal for encapsulated designs



MIRROR FOIL

Translucent, thin foil with a colored glass effect

BLUE
MIRROR FOIL

SKY BLUE
MIRROR FOIL

PURPLE
MIRROR FOIL

PINK
MIRROR FOIL

PNDFO638

PNDFO637

PNDFO636

PNDFO639

HOW TO USE

Cut out the desired shape from the foil roll, then adhere it using builder gel, acrylic, Liquid Stone Gel or Glue Gel. Clear-capping can be done with builder gel, acrylic or a thicker coat of flexible top gel (e.g. Nail Art Top Gel).

COLOR

acrylic paints



Color Acrylic Paint

■ Highly pigmented, colored, air-drying acrylic paints

A highly pigmented, thick and creamy acrylic paint specifically for the one move technique; waterproof when dry. Also suitable for traditional acrylic techniques (e.g. contouring and shading). Requires no thinning.



18 ML PNAK001-022

18 ML PNAK023-042

18 ML PNAK044-047



Color Acrylic Paint

Color acrylic paints

SNEEZE GUARD

■ Sneeze guard made of clear acrylic

The 2mm thick, 595 x 790mm sneeze guard made of acrylic protects you against airborne droplets (caused by sneezing, coughing) at your workstation. The plexiglass shield has double-sided adhesive tape on its feet, so it can easily be attached to your desktop.

WARNING! Both sides have a protective foil layer that needs to be removed before use.

WIDTH: 595mm | **HEIGHT:** 790mm

SIZE OF THE OPENING: 300 x 200mm

PC PNSE713



HAND CLEANER GEL

■ Clear gel with alcohol and glycerin for cleaning hands

Alcohol-based hand cleaner gel for maintaining adequate hand hygiene. It contains glycerin that not only cares for the skin but also acts as an antibacterial agent. This gel air-dries and there is no need to rinse off any residue with water. The glycerin content of this special hand cleaner protects the skin from drying out. Also recommended for sensitive skin.

100 ML PNKTG001





NEW

DISPOSABLE FACE MASK

■ Latex-free, disposable face mask

Protects against dust during the filing steps, and helps to avoid breathing in chemicals that might irritate the airways. The mask has an adjustable nose wire, a non-woven inner fabric layer and elastic ear loops for extra comfort.

PINK	50 PCS / BOX	PNV0103
BLUE	10 PCS / BOX	PNV0104



LATEX GLOVES

■ Disposable latex gloves, powdered

These gloves are made of natural latex, and they protect the hands from microorganisms, excess moisture and dust. The powdered inner side makes it easier to put on the glove. The gloves are available in size M. Both gloves are universal, so they are equally suitable for the left and the right hand.

WARNING! If you are allergic or your hands are extra sweaty, it is advisable to wear cotton undergloves with the latex ones.

2 PCS / PACK	PNV020
--------------	--------



NITRILE GLOVES

■ Latex- and powder-free, disposable gloves

These gloves are elastic, flexible and thin enough to allow you to work comfortably. Compared to latex gloves, these are stronger, more durable and they do not tear easily. These gloves are resistant to chemicals and substances. The fingertips are micro textured, and this slightly coarse surface allows you to have a secure grip. Although the gloves are powder-free, they are designed to be put on and taken off easily. There is an added comfort in comparison with latex gloves: during wear, your hands will not get as sweaty. Also recommended for sensitive skin. All gloves are universal, so they are equally suitable for the left and the right hand.

S	100 PCS / BOX	PNV022
M	100 PCS / BOX	PNV023

SILICONE SKIN PROTECTOR STICKER

■ U-shaped silicone sticker for skin protection

Stick it around the nails to prevent skin contact. Easy to adjust it to any nail size or shape and it provides good adhesion. These stickers are extremely handy for nail polish or lacgel application, masking techniques, the ombre technique, the application of chrome powders/ flakes and other surface nail art.

PC	PNDM01
----	--------



PROTECTIVE BANDAGE

■ Self-adhesive, protective bandage

This bandage protects your fingers from cuts and abrasion caused by tools used during salon work.

PINK	PC	PNV033
BROWN	PC	PNV034



NAIL PADS

■ Lint-free nail pads made of fabric

Absolutely lint-free, strong, durable and tear-free nail pads – perfect for removing the sticky residue from nails and cleaning your brushes. They efficiently remove dust particles and leave no lint behind.

400 PCS / PACK	PNSE304
----------------	---------



NEW

NAIL WIPES

■ Lint-free, perforated nail wipes made of paper

Lint-free, perforated, extra absorbent nail wipes made of paper – suitable for removing the sticky residue from nails and removing nail polish.

PREMIUM	100 PCS	PNSE301	500 PCS	PNSE303
BASIC	500 PCS	PNSE302		





SILICONE MAT

■ Silicone mat for your workstation

This durable, water repellent and non-matting product is suitable for replacing regular and paper towels during salon work. Easy to clean and sanitize. You can put paints and colored gels directly onto the mat.

PURPLE

PC PNSE639

CLEAR

PC PNSE640



WASHABLE,
SANITIZABLE

SILICONE NAIL ART PAD

■ Transparent, mini silicone pad

Excellent table surface protector to put under gel jars. This transparent pad is perfect for mixing colors, while the softness of the silicone will prevent decor stones from bouncing off. It's easy to clean, durable and water repellent.

2 PCS / PACK PNSE691



ARM AND ELBOW REST

■ Multifunctional arm rest made of plastic

This durable hand rest provides comfortable support for the hand. The non-slip and water repellent surface makes it easy to clean and sanitize.

PC PNSE641



HAND REST - SOFT

■ Hand rest made of memory foam with a terrycloth cover

This hand rest provides stable support for the hand. The cover is removable and machine-washable.

PC PNB0018



MEMORY
FOAM

COVER IS
MACHINE-
WASHABLE

NAIL
TECHNICIANS'
FAVORITE



DUST MAGNET BRUSH

- Double-sided dust removal brush with dust magnet effect

Special double-sided dust removal brush with dust magnet effect. The unique design and bristles help remove all the dust particles trapped on the nail bed. It contains roughly 3,000 silicone bristles which attract the dust particles like a magnet. For dry and wet use. Easy to clean and sterilize.

PC PNSE649



UNICORN BRUSH

- Dusting brush with a unicorn shaped handle

The extra soft and densely packed bristles of this brush help you to completely remove dust particles from the nail after filing. This brush is gentle on the skin to make this dust-off phase a more pleasant experience for your clients. It is perfectly suitable for a Russian manicure to dust off sensitive skin and the area around the side walls.

GOLD

PC PNSE709

PINK

PC PNSE710



CAT EYE LACGEL MAGNET - GREY

- Double-sided magnet for magnetizable lacgels

The grains in Cat Eye lacgels react to the magnet placed over the nail, revealing a lighter color design on the nail. One side is suitable for creating straight lines, the other is for creating arched and wavy lines.

PC PNSE703



CAT EYE LACGEL MAGNET - BLACK

- Double-sided magnet for extra-pigmented magnetizable lacgels

The marked end of the magnet pulls the color grains together, whereas the unmarked end of the magnet spreads the particles. You can create a circle and several other shapes with this special magnet. This magnet is specifically recommended for 9D Cat Eye lacgels.

PC PNSE708

TOWEL WITH LOGO

- 30x50 cm towel made of white terrycloth

This terrycloth towel is a great alternative to paper table mats on your workstation during salon work. It is also recommended for pedicure.

PC PNRE62



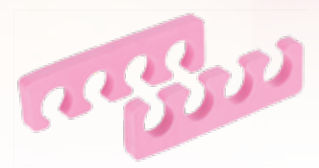
PERFECT
SALON
ACCESSORIES

TOE SEPARATOR - PINK

- Toe separator tool made of polyfoam

This handy tool gently keeps toes separate during lacgel or nail polish application and the treatment of the heel. It facilitates pedicure, lacgel or nail polish application steps at home or in the salon. This toe separator is made of double-layered polyfoam and it is also recommended for sensitive skin.

2 PCS / PACK PNSE516



PEDICURE FILE - CLASSIC

- Heel file with a handle, made of plastic

It is recommended for the finishing stages of a pedicure to smooth out the skin.

PC PNPE020



PEDICURE SLIPPERS - FOAM

- Disposable slippers for pedicure clients

Hygienic, disposable foam slippers for your clients.

2 PCS / PACK PNPE011



PEDICURE SLIPPERS - POLYFOAM

- Slippers for pedicure clients for multiple use

These slippers are made of soft, thin, washable, sanitizable and highly durable polyfoam.

2 PCS / PACK PNPE010



PERFECT
PURPLE

Nail Art accessories



COLOR CHART WHEEL

■ Color chart wheel with 20 nail art tips arranged like the petals of a daisy

Suitable for displaying nail polishes, lacgels and professional colored materials, and for demonstrating nail art techniques.

CLEAR	PC	PNSE507
NATURAL	PC	PNSE508



COLOR CHART STICKS

■ Transparent color chart sticks

These are suitable for displaying nail polish, lacgel and various builder products, as well as nail art techniques.

10 PCS / PACK PNSE597

EXPANDABLE



COLOR CHART STICKS FAN WITH RING

■ Transparent color chart sticks with 30 nail art tips

30 color chart sticks arranged in a fan shape with a latched metallic ring.

30 STICKS / FAN PNSE598



COLOR CHART SPIRAL DISPLAY

■ Spirál formába rendezhető, átlátszó színminta tipek

Display stand for arranging 120 color chart sticks in a spiral form. The spiral display features a stylish crystal at the top.

HEIGHT: 35 cm

120 STICKS / STAND PNSE642

EXPANDABLE



SAMPLE TIP

■ Sample tip ring

Suitable for displaying nail polishes and lacgels. The rings allow for placing on lacgel bottles.

CLEAR	50 PCS / PACK	PNTGY003
WHITE	50 PCS / PACK	PNTGY004



MAGNETIC PALETTE RING

■ Mixing palette ring for gel painting

This mini palette is ideal during gel painting to quickly mix colors and store them until you finish the design. It is a practical solution, since your color mixes are all together and easy to reach.

PC PNSE596



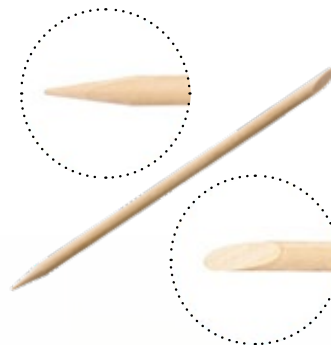
ORANGE WOOD STICK

■ Double-ended orange wood stick

The slanted end is suitable for pushing back the cuticle, while the pointed end allows for an easy positioning of nail art bits and pieces. It is also suitable for wiping any unwanted gel off the side walls, and for painting the smile line and mixing gel products.

LENGTH: 18 cm

PC PNSE040



NAIL ART TIP #03

■ Nail art tips in size #03

Suitable for displaying nail polishes, lacgels and professional colored materials, and for demonstrating nail art techniques.

WHITE	50 PCS / PACK	PNDT001
BLACK	50 PCS / PACK	PNDT002
NUDE	50 PCS / PACK	PNDT003

OUR INSTRUCTORS' FAVORITE



Holders & dispensers



NAIL POOL FOR DIPPING

■ Dipping pool for quick and easy application of color acrylic powders

The finger guide rail allows the whole surface of the nail covered with nail hardener gel, to be dipped in the acrylic powder simply and smoothly. The special design drastically reduces the time needed for creating French ends. Use colored acrylic powders to create the desired colored nail design.

PC PNSE647



MANICURE BOWL

■ Soaking bowl made of plastic

Plastic manicure bowl of ergonomic design which conforms to the fingers perfectly, providing the hand with comfortable support.

PC PNSE638



DAPPEN DISH - GLASS

■ Dappen dish made of glass with a metallic lid

Ideal for rationing and applying the liquid ingredients during work. The metallic lid prevents the evaporation of the liquid. Easy to clean.

PC PNSE643



DAPPEN DISH - PORCELAIN

■ Dappen dish made of porcelain with a cork stopper

Liquid container with heat distributing double thickness walls preventing the premature setting of acrylic in warmer and a delayed setting in colder ambient temperatures. The container is corked for an odor-tight sealing. Easy to clean.

PC PNSE218

CLEAR CONTAINER FOR NAIL ART

■ Clear container made of plastic

Transparent 3 g plastic container with a screw lid to store nail art bits and pieces.

PC PNSE646



TIP BOX

■ Tip storage box made of plastic

This clear box has 12 slots to properly organize and store nail tips of various sizes.

PC PNSE540



NAILS:
Évi Darabos – Master Trainer

Promo products

APRONS WITH LOGO

■ Recommended for nail techs and salon work

Machine-washable aprons with a neck loop and ties to go around the waist. The black apron is made of water-repellent material and it is somewhat shorter, down to the mid-thigh area. The pink and white aprons are made of cotton, and they are both knee-length.

BLACK: 59x70 cm | **PINK:** 63x82 cm | **WHITE:** 63x82 cm

BLACK

PC

PNRE55

WHITE

PC

PNRE64

PINK

PC

PNRE56



T-SHIRTS WITH LOGO

■ T-shirts made of cotton

These T-shirts are ideal for salon work. They are slim fit, ensuring stylish elegance and comfortable wear. The black and purple T-shirts feature the Perfect Nails logo in the front, written in rhinestones.

BLACK

XL

PNRE60

XXL

PNRE61

PURPLE

S

PNRE145

M

PNRE146

L

PNRE147



SLIM-FIT
DESIGN

NEW

NECK STRAP WITH LOGO

PC

PNRE45



PEN WITH LOGO

PC

PNRE12



LIGHTER WITH LOGO

PC

PNRE47





PERFECT CALENDAR

- Appointment book for 2021

This upgraded, smaller planner easily fits into your handbag. It features a weekly layout with an hourly grid from 6 a.m. to 9 p.m. The calendar contains a data sheet, an overview of the year, a monthly grid, as well as colorful inspirational nail photos.

WIDTH: 124 mm | **HEIGHT:** 182 mm

PC PNRE158



PERFECT BEAUTY MAGAZINE

- Trend magazine featuring new releases

Our complimentary trend magazine is published regularly and apart from introducing the newest Perfect Nails products, it offers nail tech articles, Perfect tips and tricks, as well as step by step instructions.



PERFECT NAILS CATALOG

- Annually published product catalog

Our complimentary catalog is published annually and it encompasses the current Perfect Nails product range. The catalog lists product features and descriptions, and contains comparison charts and "how to use" sections.

PC PNRE037



FOLDER WITH LOGO

- Size A4 paper folder

This premium quality, sturdy paper folder has a matte finish and features a colorful nails design and the Perfect Nails logo. It is an ideal solution for storing certificates.

WIDTH: 210 mm | **HEIGHT:** 297 mm

PC PNRE46



PAPER BAG WITH FLAT HANDLES

- Environmentally friendly paper bag in purple

Our reusable and recyclable paper bags promote Perfect sustainability. If you leave our stores with a paper bag full of goodies, you have already made a difference for the environment. When you are done using the bag, make sure to place it into the appropriate recycle bin.

SZÉLESSÉG: 18 cm | **HEIGHT:** 22 cm | **DEPTH:** 8 cm

PC PNRE149



PAPER BAG WITH ROPE HANDLES

- Decorative paper bag with a shiny finish

This decorative bag is ideal as a gift bag when you want to surprise someone with Perfect Nails products. No extra gift wrapping needed.

SMALL **PC** PNRE65

WIDTH: 18 cm | **HEIGHT:** 23 cm | **DEPTH:** 8 cm

LARGE **PC** PNRE66

WIDTH: 27 cm | **HEIGHT:** 35 cm | **DEPTH:** 12 cm



In-store displays



CONTINUOUSLY
RENEWED
RANGE



PERFECT NAILS POSTER

- Size A2 posters

Continuously renewed range of artistic photos on premium paper.

WIDTH: 420 mm | **HEIGHT:** 594 mm

PERFECT GIRL **PC** PNRE144

JUNGLE GIRL **PC** PNRE156



EASY TO SWAP
BACKGROUNDS

LACGEL COLLECTION DISPLAY

- Promotional display for lacgel collections

This handy display offers a neat solution for showcasing the current lacgel collections. The display base has two slots to accommodate various backgrounds that are sold separately. Each background showcases a specific lacgel collection and has two tabs for quick and easy attachment to the base. The display does not take up a lot of space on the counter, offering a practical solution for events and trade shows as well.



BASE **PC** PNSE670

WIDTH: 26 cm | **HEIGHT WITHOUT BACKGROUND:** 6 cm | **HEIGHT WITH BACKGROUND:** 22 cm
DEPTH: 18 cm

BACKGROUND

WIDTH: 26 cm | **HEIGHT:** 16 cm | **HEIGHT WITH TABS:** 20 cm



WHITE TAPE WITH LOGO

PC PNRE2

COUNTERTOP DISPLAY FOR LACGELS

- Display stand with 4 shelves and multiple slots for lacgels

This countertop display offers a neat way to organize and showcase the Perfect Nails lacgel range. If you take 15ml bottles, the depth of the shelves allows maximum 3 of them in a row. The clear dividers can be moved horizontally, so 4ml, 8ml and 15ml bottles equally fit snugly into the slots.

WIDTH: 31 cm | **HEIGHT:** 63 cm | **DEPTH:** 19 cm

PC PNSE404



COUNTERTOP DISPLAY FOR NAIL FILES

- Display stand for nail files made of plastic with 13 vertical slots

This countertop display is ideal for organizing and showcasing nail files and buffers offered by Perfect Nails. Although it does not take up a lot of space on the counter, it is definitely an eye-catching display.

WIDTH: 10 cm | **HEIGHT:** 57 cm | **DEPTH:** 11 cm | **SOLE:** 22x19 cm

PC PNSE704



13
VERTICAL
SLOTS

PRODUCT PRESENTATION DISPLAY

- Clear display stand made of plastic

Any product can be showcased from the Perfect Nails range. The background, the base and the front have slots to easily swap graphics. We recommend this presentation display for in-store countertops, as well as events and trade shows.

WIDTH: 21 cm | **HEIGHT:** 30,5 cm | **DEPTH:** 23,5 cm

PC PNSE403



EASY TO SWAP
GRAPHICS

Perfect Day

worldwide



Training for nail technicians

Our training courses feature experienced salon nail technicians sharing all their knowledge with their young, less experienced colleagues eager to develop and get better. These young nail technicians will get information and useful tips regarding the use the materials, mainly our new products, from the best sources!



PERFECT DAY LOCATIONS IN EUROPE

BUDAPEST +20 TOWNS – HUNGARY

MÜNCHEN, ERLANGEN – GERMANY

BADEN-BADEN – GERMANY

RASTATT – GERMANY

ZAGREB - CROATIA

LJUBLJANA – SLOVENIA

GALAȚI – ROMANIA

TÂRGU MUREȘ – ROMANIA

RAVENSBURG – GERMANY

ROME – ITALY

SOFIA – BULGARIA

VIENNA – AUSTRIA

ROTTERDAM – NETHERLANDS

KOMÁRNO – SLOVAKIA

PRAGUE – CZECH REPUBLIC

BRNO – CZECH REPUBLIC



YOUR DISTRIBUTOR



This catalog is not to be distributed among residential consumers. We do not assume any liability for any printing errors.

© 2019 Copyright | Perfect Nails Kft. | All rights reserved. | perfectnailscompany.com